

Courtesy Of Debbie A Smith Of RE/MAX Elite

## **\$450,000 - 9430 Stein Way, Edmonton**

MLS® #E4464026

**\$450,000**

4 Bedroom, 3.50 Bathroom, 1,516 sqft  
Single Family on 0.00 Acres

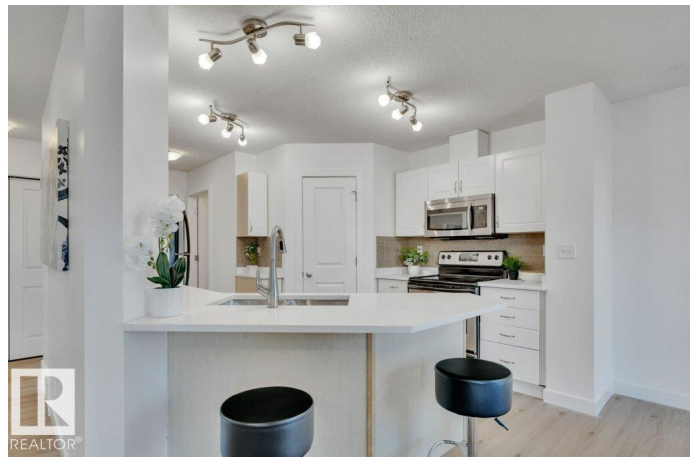
South Terwillegar, Edmonton, AB

Location! Location in Terwillegar South 2 doors to WALKING TRAIL leading to PLAYGROUND with SPLASH PARK! Recently RENOVATED with LUX VINYL PLANK flooring throughout 90% of home on 3 levels! Freshly PAINTED with LIGHT & BRIGHT WHITE neutral decor on the upper 2 levels with NEW QUARTZ countertops in the Kitchen with big PENINSULA providing overhang for stools & includes W/I PANTRY, abundance of cabinetry and some new lighting. All OPEN to the Great room with GAS FIREPLACE and Dining area with PATIO Doors leading to the REBUILT DECK and MASSIVE BACKYARD! Upstairs is a DEN/FLEX room and 3 Spacious bedrooms and 2 FULL 4 pce Bathrooms. The FULLY FINISHED BASEMENT has WETBAR, Family room, 4th BEDROOM, 3rd Full BATHROOM and Laundry. Great space for the kids or game days. Quiet crescent yet close to ALL AMENITIES, SCHOOLS, PARKS, Anthony Henday and Public transportation. With 4 bedrooms, 4 Bathrooms, Front ATTACHED DOUBLE garage with work benches, fully fenced and landscaped HUGE yard makes this a perfect family home

Built in 2008

### **Essential Information**

MLS® #                      E4464026



Price	\$450,000
Bedrooms	4
Bathrooms	3.50
Full Baths	3
Half Baths	1
Square Footage	1,516
Acres	0.00
Year Built	2008
Type	Single Family
Sub-Type	Half Duplex
Style	2 Storey
Status	Active

### **Community Information**

Address	9430 Stein Way
Area	Edmonton
Subdivision	South Terwillegar
City	Edmonton
County	ALBERTA
Province	AB
Postal Code	T6R 0L6

### **Amenities**

Amenities	Deck, Fire Pit, Secured Parking, Vinyl Windows, Wet Bar
Parking Spaces	4
Parking	Double Garage Attached

### **Interior**

Interior Features	ensuite bathroom
Appliances	Dishwasher-Built-In, Dryer, Garage Control, Garage Opener, Microwave Hood Fan, Refrigerator, Storage Shed, Stove-Electric, Washer, Window Coverings
Heating	Forced Air-1, Natural Gas
Fireplace	Yes
Fireplaces	Mantel, Tile Surround
Stories	3
Has Basement	Yes
Basement	Full, Finished

### **Exterior**

Exterior	Wood, Vinyl
Exterior Features	Airport Nearby, Cul-De-Sac, Fenced, Landscaped, Park/Reserve, Playground Nearby, Public Swimming Pool, Public Transportation, Schools, Shopping Nearby
Roof	Asphalt Shingles
Construction	Wood, Vinyl
Foundation	Concrete Perimeter

### **Additional Information**

Date Listed            October 30th, 2025

Days on Market      1

Zoning                Zone 14

DATA IS DEEMED RELIABLE BUT IS NOT GUARANTEED ACCURATE BY THE REALTORS® ASSOCIATION OF EDMONTON. COPYRIGHT 2025 BY THE REALTORS® ASSOCIATION OF EDMONTON. ALL RIGHTS RESERVED. Trademarks are owned or controlled by the Canadian Real Estate Association (CREA) and identify real estate professionals who are members of CREA (REALTOR®, REALTORS®) and/or the quality of services they provide (MLS®, Multiple Listing Service®)

Listing information last updated on October 31st, 2025 at 5:17am MDT