

\$249,900 - 137 Londonderry Square, Edmonton

MLS® #E4463561

\$249,900

4 Bedroom, 1.50 Bathroom, 1,317 sqft
Condo / Townhouse on 0.00 Acres

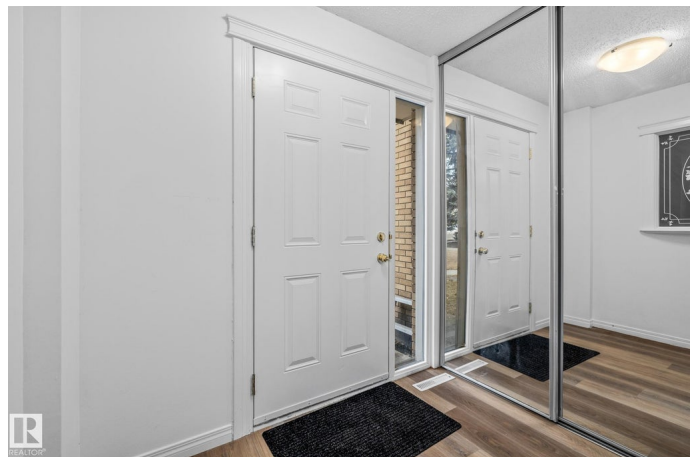
Kilkenny, Edmonton, AB

Welcome to this beautifully renovated 4-bedroom, 1.5-bath townhouse, where modern style meets everyday comfort! Step inside and fall in love with the bright, open layout featuring premium vinyl plank flooring flowing throughout the whole house. The spacious kitchen offers abundant cabinetry, generous counter space, and a spacious dining area perfect for family meals and entertaining guests. Just off the kitchen is a convenient 2-piece bathroom. Relax in the inviting living room, showcasing a stunning tile-and-batten accent wall and designer lighting, creating a cozy yet elegant atmosphere. Step through the patio doors to your private, south-facing backyard with a newer vinyl fence, perfect for BBQs, gatherings, and soaking up the sun. Upstairs you have four comfortable bedrooms and a modern 4-piece bath providing space for everyone. The unfinished basement with laundry awaits your personal touch. All of this, completed with one powered assigned parking stall, close to schools, parks, shopping, and transit

Built in 1968

Essential Information

MLS® #	E4463561
Price	\$249,900



Bedrooms	4
Bathrooms	1.50
Full Baths	1
Half Baths	1
Square Footage	1,317
Acres	0.00
Year Built	1968
Type	Condo / Townhouse
Sub-Type	Townhouse
Style	2 Storey
Status	Active

Community Information

Address	137 Londonderry Square
Area	Edmonton
Subdivision	Kilkenny
City	Edmonton
County	ALBERTA
Province	AB
Postal Code	T5C 3C4

Amenities

Amenities	Parking-Extra, Parking-Visitor, See Remarks
Parking Spaces	1
Parking	Stall

Interior

Appliances	Dishwasher-Built-In, Dryer, Microwave Hood Fan, Refrigerator, Stove-Electric, Washer
Heating	Forced Air-1, Natural Gas
Stories	2
Has Basement	Yes
Basement	Full, Unfinished

Exterior

Exterior	Wood, Brick
Exterior Features	Fenced, Flat Site, Golf Nearby, Landscaped, No Back Lane, Picnic Area, Playground Nearby, Public Swimming Pool, Public Transportation, Schools, Shopping Nearby

Roof	Asphalt Shingles
Construction	Wood, Brick
Foundation	Concrete Perimeter

School Information

Elementary	John Barnett School
Middle	Londonderry School
High	Steele Heights School

Additional Information

Date Listed	October 25th, 2025
Days on Market	7
Zoning	Zone 02
Condo Fee	\$393

DATA IS DEEMED RELIABLE BUT IS NOT GUARANTEED ACCURATE BY THE REALTORS® ASSOCIATION OF EDMONTON. COPYRIGHT 2025 BY THE REALTORS® ASSOCIATION OF EDMONTON. ALL RIGHTS RESERVED. Trademarks are owned or controlled by the Canadian Real Estate Association (CREA) and identify real estate professionals who are members of CREA (REALTOR®, REALTORS®) and/or the quality of services they provide (MLS®, Multiple Listing Service®)

Listing information last updated on November 1st, 2025 at 7:02pm MDT