

\$339,900 - 54352 Rge Road 221, Rural Strathcona County

MLS® #E4460746

\$339,900

0 Bedroom, 0.00 Bathroom,
Rural on 2.28 Acres

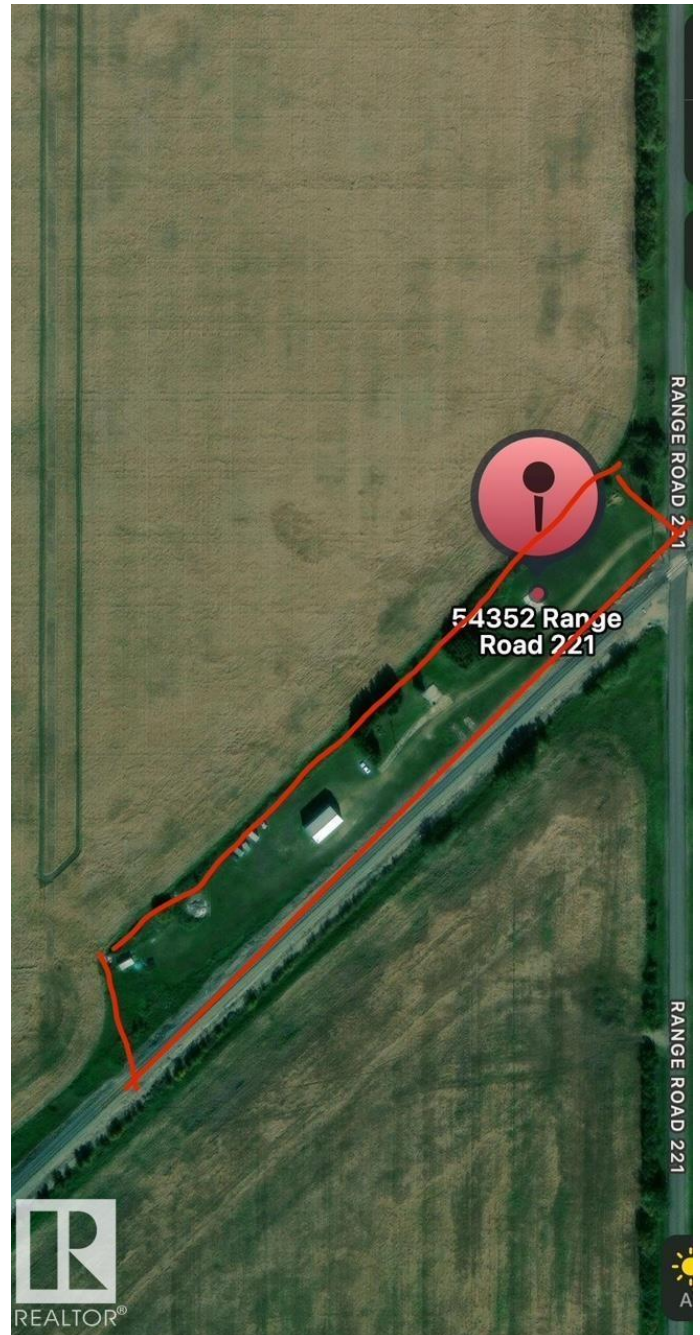
None, Rural Strathcona County, AB

This exceptional 2.28-acre property offers the perfect blend of space, location, and potential, ideally situated just 10 minutes southeast of Fort Saskatchewan. With easy access to Fort Saskatchewan, Dow Chemical, Shell Scotford, and other major industrial hubs, this location is ideal for business owners, commuters, or investors seeking opportunity outside city limits. Not located in a subdivision, the property offers flexibility and freedom for a wide range of potential uses. Whether you're looking to build, operate a business, or establish a rural retreat, the possibilities here are truly endless. A large drive-through shop is already on site perfect for equipment storage, workshop use, or commercial needs. Power has been brought in, saving you time and cost in development. Take advantage of this rare opportunity to own a versatile piece of land in a growing and accessible area of Strathcona County.

Built in 2002

Essential Information

MLS® #	E4460746
Price	\$339,900
Bathrooms	0.00
Acres	2.28



Year Built	2002
Type	Rural
Sub-Type	Vacant Lot/Land
Status	Active

Community Information

Address	54352 Rge Road 221
Area	Rural Strathcona County
Subdivision	None
City	Rural Strathcona County
County	ALBERTA
Province	AB
Postal Code	T8L 3Z7

Exterior

Exterior Features	Airport Nearby, Level Land Fenced
-------------------	--------------------------------------

Additional Information

Date Listed	October 2nd, 2025
Days on Market	2
Zoning	Zone 62

DATA IS DEEMED RELIABLE BUT IS NOT GUARANTEED ACCURATE BY THE REALTORS® ASSOCIATION OF EDMONTON. COPYRIGHT 2025 BY THE REALTORS® ASSOCIATION OF EDMONTON. ALL RIGHTS RESERVED. Trademarks are owned or controlled by the Canadian Real Estate Association (CREA) and identify real estate professionals who are members of CREA (REALTOR®, REALTORS®) and/or the quality of services they provide (MLS®, Multiple Listing Service®)

Listing information last updated on October 4th, 2025 at 1:02pm MDT

