

\$199,900 - 324 2098 Blackmud Creek Drive, Edmonton

MLS® #E4459183

\$199,900

1 Bedroom, 1.00 Bathroom, 806 sqft

Condo / Townhouse on 0.00 Acres

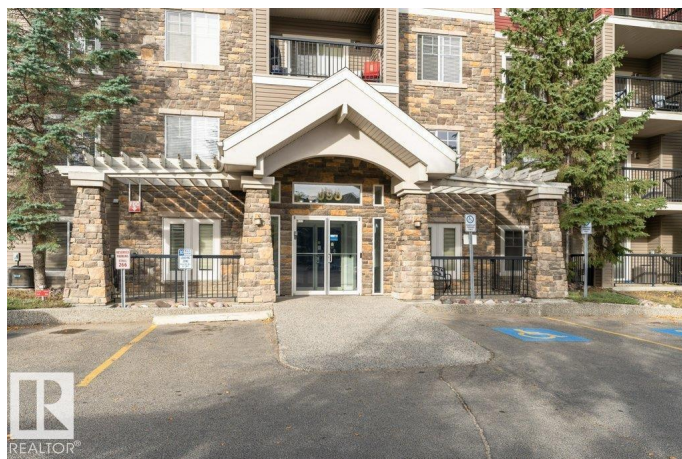
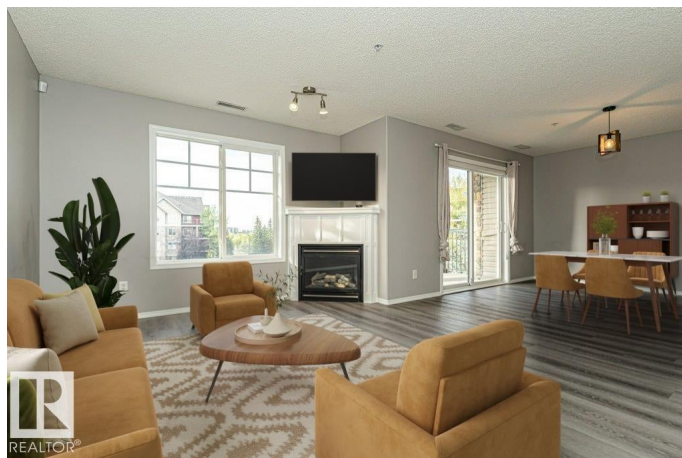
Blackmud Creek, Edmonton, AB

Welcome to this beautifully updated 1 bedroom, 1 bathroom condo ideally located near schools, parks, walking trails, shopping, and public transportation. Perfectly situated in the building close to the elevators, this home offers convenience and comfort. The spacious kitchen features timeless cabinetry, ample counter space, and brand-new appliances. The large living room showcases a cozy gas fireplace and a picture window that fills the space with natural light. The dining area opens to a private deck with lovely views, perfect for relaxing or entertaining. Additional highlights include fresh paint, new flooring throughout, a titled underground parking stall, and a generous in-suite storage room with laundry. A fantastic opportunity for first-time buyers, downsizers, or investors!

Built in 2004

Essential Information

MLS® #	E4459183
Price	\$199,900
Bedrooms	1
Bathrooms	1.00
Full Baths	1
Square Footage	806
Acres	0.00
Year Built	2004



Type	Condo / Townhouse
Sub-Type	Lowrise Apartment
Style	Single Level Apartment
Status	Active

Community Information

Address	324 2098 Blackmud Creek Drive
Area	Edmonton
Subdivision	Blackmud Creek
City	Edmonton
County	ALBERTA
Province	AB
Postal Code	T6W 1T7

Amenities

Amenities	Off Street Parking, On Street Parking, Deck, Intercom, Parking-Visitor, Security Door
Parking Spaces	1
Parking	Underground

Interior

Appliances	Air Conditioning-Central, Dishwasher-Built-In, Dryer, Microwave Hood Fan, Refrigerator, Stove-Electric, Washer
Heating	Forced Air-1, Natural Gas
Fireplace	Yes
Fireplaces	Corner, Mantel
# of Stories	4
Stories	1
Has Basement	Yes
Basement	None, No Basement

Exterior

Exterior	Wood, Stone, Vinyl
Exterior Features	Airport Nearby, Backs Onto Park/Trees, Golf Nearby, Playground Nearby, Private Setting, Public Transportation, Schools, Shopping Nearby
Roof	Asphalt Shingles
Construction	Wood, Stone, Vinyl
Foundation	Concrete Perimeter

Additional Information

Date Listed	September 24th, 2025
Days on Market	1
Zoning	Zone 55
Condo Fee	\$454

DATA IS DEEMED RELIABLE BUT IS NOT GUARANTEED ACCURATE BY THE REALTORS® ASSOCIATION OF EDMONTON. COPYRIGHT 2025 BY THE REALTORS® ASSOCIATION OF EDMONTON. ALL RIGHTS RESERVED. Trademarks are owned or controlled by the Canadian Real Estate Association (CREA) and identify real estate professionals who are members of CREA (REALTOR®, REALTORS®) and/or the quality of services they provide (MLS®, Multiple Listing Service®)

Listing information last updated on September 25th, 2025 at 7:17am MDT