

\$1,090,000 - Twp 512 Rr 231, Rural Strathcona County

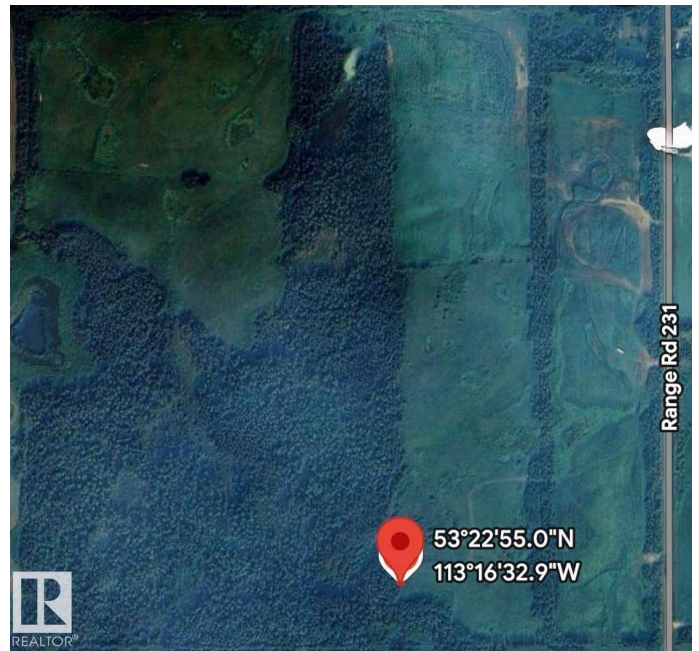
MLS® #E4458989

\$1,090,000

0 Bedroom, 0.00 Bathroom,
Rural on 53.13 Acres

None, Rural Strathcona County, AB

Exceptional Development Opportunity:
Discover this expansive 53-acre parcel, ideally situated just minutes from the city. With endless possibilities for building, subdividing, or pursuing a variety of development projects, this property is a prime investment for developers, investors, and visionaries alike. Whether you envision a subdivision with walkout lots, small or large acreage parcels, or an entirely new community, this land offers unmatched potential. Create something extraordinary with close access to Sherwood Park, Edmonton, and Beaumont.



Essential Information

MLS® #	E4458989
Price	\$1,090,000
Bathrooms	0.00
Acres	53.13
Type	Rural
Sub-Type	Vacant Lot/Land
Status	Active

Community Information

Address	Twp 512 Rr 231
Area	Rural Strathcona County
Subdivision	None
City	Rural Strathcona County

County ALBERTA
Province AB
Postal Code T8B 1K5

Exterior

Exterior Features See Remarks

Additional Information

Date Listed September 22nd, 2025
Days on Market 12
Zoning Zone 80

DATA IS DEEMED RELIABLE BUT IS NOT GUARANTEED ACCURATE BY THE REALTORS® ASSOCIATION OF EDMONTON. COPYRIGHT 2025 BY THE REALTORS® ASSOCIATION OF EDMONTON. ALL RIGHTS RESERVED. Trademarks are owned or controlled by the Canadian Real Estate Association (CREA) and identify real estate professionals who are members of CREA (REALTOR®, REALTORS®) and/or the quality of services they provide (MLS®, Multiple Listing Service®)

Listing information last updated on October 4th, 2025 at 9:17pm MDT