

\$299,000 - 9332 34 Avenue, Edmonton

MLS® #E4457720

\$299,000

0 Bedroom, 0.00 Bathroom,
Business on 0.00 Acres

Strathcona Industrial Park, Edmonton, AB

Lucrative restaurant for sale, 96 seats, 3025 sq ft, 1 years left on current lease plus option. Transferable and assignable lease to qualified buyers. 2 separate cooking stations with separate hood fans. Owner will provide 2 weeks training. Excellent location in busy strip mall. If your in the market for a new and exciting business venture this is the opportunity you've been looking for!

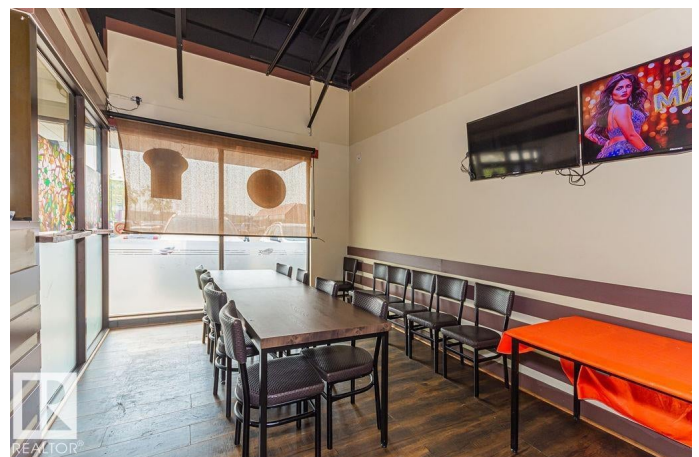
Built in 1980

Essential Information

MLS® #	E4457720
Price	\$299,000
Bathrooms	0.00
Acres	0.00
Year Built	1980
Type	Business
Status	Active

Community Information

Address	9332 34 Avenue
Area	Edmonton
Subdivision	Strathcona Industrial Park
City	Edmonton
County	ALBERTA
Province	AB
Postal Code	T6E 5T5



Exterior

Exterior	Concrete
Construction	Concrete

Additional Information

Date Listed	September 13th, 2025
Days on Market	1
Zoning	Zone 41

DATA IS DEEMED RELIABLE BUT IS NOT GUARANTEED ACCURATE BY THE REALTORS® ASSOCIATION OF EDMONTON. COPYRIGHT 2025 BY THE REALTORS® ASSOCIATION OF EDMONTON. ALL RIGHTS RESERVED.Trademarks are owned or controlled by the Canadian Real Estate Association (CREA) and identify real estate professionals who are members of CREA (REALTOR®, REALTORS®) and/or the quality of services they provide (MLS®, Multiple Listing Service®)

Listing information last updated on September 14th, 2025 at 1:47am MDT