

\$264,900 - 20 Walden Park, St. Albert

MLS® #E4451954

\$264,900

3 Bedroom, 1.50 Bathroom, 1,175 sqft
Condo / Townhouse on 0.00 Acres

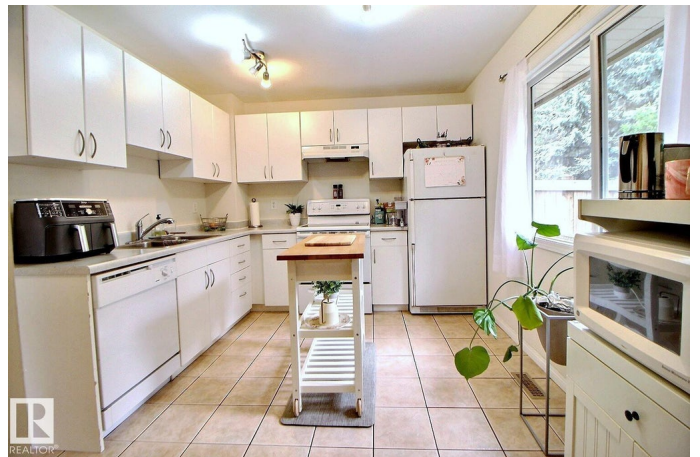
Woodlands (St. Albert), St. Albert, AB

Walden Park!! Need I say more? Well maintained, move-in ready END UNIT. Offers 3 bedroom, 1.5 bath and partially finished basement. Impressive main level features bright & open space with an updated timeless white kitchen, spacious dining area and sizable living room. Durable & clean ceramic tile flows throughout the main level. Being an end unit you will enjoy an abundance of natural light. The main level is finished off with a convenient 2 pc bathroom and access to your quaint fenced back yard which is adjacent to a sizeable green space. Upper floor contains large master bedroom, 2 good-sized additional bedrooms and full bath. Walden Park is a well-run complex with reasonable condo fees inc. sewer, water and garbage pick-up. Ideal location close to schools, trails, golf, Red Willow water park! A real GEM, don't wait, it won't last long.

Built in 1981

Essential Information

| | |
|------------|-----------|
| MLS® # | E4451954 |
| Price | \$264,900 |
| Bedrooms | 3 |
| Bathrooms | 1.50 |
| Full Baths | 1 |
| Half Baths | 1 |



| | |
|----------------|-------------------|
| Square Footage | 1,175 |
| Acres | 0.00 |
| Year Built | 1981 |
| Type | Condo / Townhouse |
| Sub-Type | Townhouse |
| Style | 2 Storey |
| Status | Active |

Community Information

| | |
|-------------|------------------------|
| Address | 20 Walden Park |
| Area | St. Albert |
| Subdivision | Woodlands (St. Albert) |
| City | St. Albert |
| County | ALBERTA |
| Province | AB |
| Postal Code | T8N 3V6 |

Amenities

| | |
|-----------|--|
| Amenities | Off Street Parking, Parking-Visitor, Patio |
| Parking | 2 Outdoor Stalls |

Interior

| | |
|--------------|--|
| Appliances | Dishwasher-Built-In, Dryer, Hood Fan, Refrigerator, Stove-Electric, Washer |
| Heating | Forced Air-1, Natural Gas |
| Stories | 2 |
| Has Basement | Yes |
| Basement | Full, Partially Finished |

Exterior

| | |
|-------------------|---|
| Exterior | Wood, Vinyl |
| Exterior Features | Fenced, Landscaped, Park/Reserve, Playground Nearby, Schools, Shopping Nearby |
| Roof | Asphalt Shingles |
| Construction | Wood, Vinyl |
| Foundation | Concrete Perimeter |

Additional Information

| | |
|-------------|------------------|
| Date Listed | August 8th, 2025 |
|-------------|------------------|

| | |
|-----------|---------|
| Zoning | Zone 24 |
| Condo Fee | \$357 |

DATA IS DEEMED RELIABLE BUT IS NOT GUARANTEED ACCURATE BY THE REALTORS® ASSOCIATION OF EDMONTON. COPYRIGHT 2025 BY THE REALTORS® ASSOCIATION OF EDMONTON. ALL RIGHTS RESERVED. Trademarks are owned or controlled by the Canadian Real Estate Association (CREA) and identify real estate professionals who are members of CREA (REALTOR®, REALTORS®) and/or the quality of services they provide (MLS®, Multiple Listing Service®)

Listing information last updated on August 8th, 2025 at 8:02pm MDT