

\$529,900 - 51 Greenbury Crescent, Spruce Grove

MLS® #E4451893

\$529,900

3 Bedroom, 2.50 Bathroom, 1,580 sqft

Single Family on 0.00 Acres

Greenbury, Spruce Grove, AB

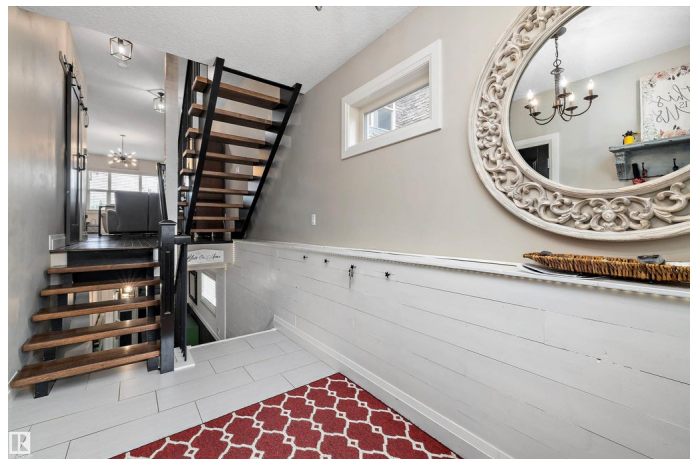
LOCATION!! LOCATION!! LOCATION!

Amazing 2-storey in the sought-after neighbourhood of Greenbury backing onto Jubilee Park!! Pride of ownership is evident the moment you open the door to this **GORGEOUS** home with the large foyer to the large open concept main floor with gleaming hardwood floors. The modern galley kitchen boasts sleek finishes and efficient designs, cabinets to the ceiling, quartz counter tops and SS appliances. Large open concept living space with gas fireplace on main floor with access to the backyard taking in the park views. Upstairs, the spacious primary bedroom includes a private 3 pc ensuite, & two additional bedrooms, a full bath, & convenient laundry complete the upper level. The finished basement has large recreation room, office area. Many extras include open tread staircase, heated storage area in garage, Greenhouse/man cave and A/C on an immaculate manicured yard.

Built in 2012

Essential Information

MLS® #	E4451893
Price	\$529,900
Bedrooms	3
Bathrooms	2.50



Full Baths	2
Half Baths	1
Square Footage	1,580
Acres	0.00
Year Built	2012
Type	Single Family
Sub-Type	Detached Single Family
Style	2 Storey
Status	Active

Community Information

Address	51 Greenbury Crescent
Area	Spruce Grove
Subdivision	Greenbury
City	Spruce Grove
County	ALBERTA
Province	AB
Postal Code	T7X 0L9

Amenities

Amenities	Air Conditioner, Deck, Exterior Walls- 2"x6", Greenhouse, No Smoking Home
Parking	Single Garage Attached

Interior

Interior Features	ensuite bathroom
Appliances	Air Conditioning-Central, Dishwasher-Built-In, Dryer, Garage Control, Garage Opener, Hood Fan, Oven-Microwave, Refrigerator, Washer, Window Coverings
Heating	Forced Air-1, Natural Gas
Fireplace	Yes
Fireplaces	Direct Vent
Stories	3
Has Basement	Yes
Basement	Full, Finished

Exterior

Exterior	Wood, Brick, Vinyl
Exterior Features	Backs Onto Park/Trees, Fenced, Flat Site, Fruit Trees/Shrubs, Golf

Nearby, Landscaped, Level Land, No Back Lane, Playground Nearby,
Schools

Roof	Asphalt Shingles
Construction	Wood, Brick, Vinyl
Foundation	Concrete Perimeter

Additional Information

Date Listed	August 8th, 2025
Zoning	Zone 91

DATA IS DEEMED RELIABLE BUT IS NOT GUARANTEED ACCURATE BY THE REALTORS® ASSOCIATION OF EDMONTON. COPYRIGHT 2025 BY THE REALTORS® ASSOCIATION OF EDMONTON. ALL RIGHTS RESERVED. Trademarks are owned or controlled by the Canadian Real Estate Association (CREA) and identify real estate professionals who are members of CREA (REALTOR®, REALTORS®) and/or the quality of services they provide (MLS®, Multiple Listing Service®)

Listing information last updated on August 8th, 2025 at 5:32pm MDT