

\$1,089,000 - 15 Elwyck Gate, Spruce Grove

MLS® #E4451865

\$1,089,000

6 Bedroom, 5.00 Bathroom, 2,833 sqft

Single Family on 0.00 Acres

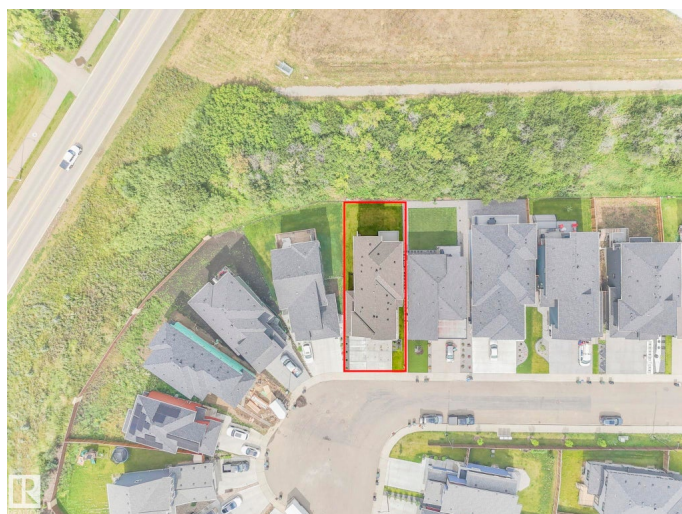
Fenwyck, Spruce Grove, AB

Located in Fenwyck, this stunning 2-storey walkout home boasts over 2,800 sq.ft. of living space and a heated, oversized triple attached garage with epoxy floors, spice kitchen in garage, side door, and many upgrades including ceiling in-built speakers on main and upper level. Enjoy a spacious front porch, back patio, and a bright interior featuring large windows, herringbone plank flooring, modern lighting, and stylish accent walls. The main floor offers a modern kitchen with quartz counters, center island, walkthrough pantry, full bath, bedroom/den, mudroom, and cozy living room with fireplace. Upstairs has a large family room, 4 bedrooms, 3 full baths, and laundry. The primary suite includes built-in shelving and a luxurious 5-piece spa ensuite. The fully finished walkout basement features a rec room with wet bar, covered patio access, bonus theatre/bedroom, bath, and storage. Move-in ready! Turn Key Property.

Built in 2024

Essential Information

MLS® #	E4451865
Price	\$1,089,000
Bedrooms	6
Bathrooms	5.00
Full Baths	5



Square Footage	2,833
Acres	0.00
Year Built	2024
Type	Single Family
Sub-Type	Detached Single Family
Style	2 Storey
Status	Active

Community Information

Address	15 Elwyck Gate
Area	Spruce Grove
Subdivision	Fenwyck
City	Spruce Grove
County	ALBERTA
Province	AB
Postal Code	T7X 0Z2

Amenities

Amenities	Air Conditioner, Ceiling 9 ft., Deck, R.V. Storage, Walkout Basement
Parking	Heated, Over Sized, RV Parking, Triple Garage Attached

Interior

Interior Features	ensuite bathroom
Appliances	Air Conditioning-Central, Alarm/Security System, Dishwasher-Built-In, Dryer, Garage Opener, Hood Fan, Oven-Built-In, Oven-Microwave, Refrigerator, Stove-Countertop Electric, Washer, Wine/Beverage Cooler, Garage Heater
Heating	Forced Air-1, Natural Gas
Fireplace	Yes
Fireplaces	Mantel, Tile Surround
Stories	3
Has Basement	Yes
Basement	Full, Finished

Exterior

Exterior	Wood, Stone, Vinyl
Exterior Features	Backs Onto Park/Trees, Golf Nearby, Landscaped, Playground Nearby, Public Transportation, Schools, Shopping Nearby, See Remarks
Roof	Asphalt Shingles

Construction	Wood, Stone, Vinyl
Foundation	Concrete Perimeter

Additional Information

Date Listed	August 8th, 2025
Zoning	Zone 91

DATA IS DEEMED RELIABLE BUT IS NOT GUARANTEED ACCURATE BY THE REALTORS® ASSOCIATION OF EDMONTON. COPYRIGHT 2025 BY THE REALTORS® ASSOCIATION OF EDMONTON. ALL RIGHTS RESERVED.Trademarks are owned or controlled by the Canadian Real Estate Association (CREA) and identify real estate professionals who are members of CREA (REALTOR®, REALTORS®) and/or the quality of services they provide (MLS®, Multiple Listing Service®)

Listing information last updated on August 8th, 2025 at 6:02pm MDT