

\$749,000 - 4 26112 Township Road 511, Rural Parkland County

MLS® #E4451027

\$749,000

4 Bedroom, 2.50 Bathroom, 1,231 sqft

Rural on 3.68 Acres

Beaverbrook Park, Rural Parkland County, AB

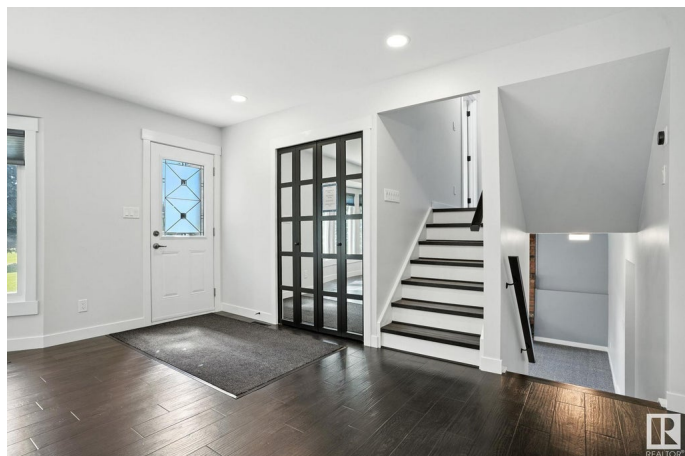
Rare find! Minutes from Devon and 10 minutes to Edmonton! Come and See! A welcoming atmosphere as you enter your private oasis through beautiful, majestic trees, leading you to the perfect home. Tastefully renovated on all 3 floors. New windows, newer kitchen appliances, and new cabinets with soft closures. Beautiful Corian counter-tops, impressive bar island, 3 bathrooms, flooring, lighting, doors, etc. 4 Bedrooms, 3 baths. The main floor features an open concept design, with a kitchen, living room, and dining area. The lower level boasts a cozy family room with a wood-burning fireplace. The basement level is unfinished, with a utility room and storage space. There is a good-sized double attached garage, 28'x22', heated and insulated. Beautiful, meticulously landscaped yard with numerous perennials. Lots of room with 3.68 acres for gardening enthusiasts, your RV, and all your special belongings! This property has been lovingly cared for for many years. It is ready for a new family to enjoy!

Built in 1974

Essential Information

MLS® # E4451027

Price \$749,000



Bedrooms	4
Bathrooms	2.50
Full Baths	2
Half Baths	1
Square Footage	1,231
Acres	3.68
Year Built	1974
Type	Rural
Sub-Type	Detached Single Family
Style	4 Level Split
Status	Active

Community Information

Address	4 26112 Township Road 511
Area	Rural Parkland County
Subdivision	Beaverbrook Park
City	Rural Parkland County
County	ALBERTA
Province	AB
Postal Code	T7Y 1B6

Amenities

Features	Crawl Space, Fire Pit
----------	-----------------------

Interior

Interior Features	ensuite bathroom
Heating	Forced Air-1, Natural Gas
Fireplace	Yes
Stories	3
Has Basement	Yes
Basement	Full, Unfinished

Exterior

Exterior	Wood
Exterior Features	Landscaped, Level Land, No Back Lane, Private Setting
Construction	Wood
Foundation	Concrete Perimeter

Additional Information

Date Listed August 1st, 2025

Days on Market 2

Zoning Zone 90

DATA IS DEEMED RELIABLE BUT IS NOT GUARANTEED ACCURATE BY THE REALTORS® ASSOCIATION OF EDMONTON. COPYRIGHT 2025 BY THE REALTORS® ASSOCIATION OF EDMONTON. ALL RIGHTS RESERVED. Trademarks are owned or controlled by the Canadian Real Estate Association (CREA) and identify real estate professionals who are members of CREA (REALTOR®, REALTORS®) and/or the quality of services they provide (MLS®, Multiple Listing Service®)

Listing information last updated on August 3rd, 2025 at 12:47pm MDT