

\$1,620 - 306 11820 22, Edmonton

MLS® #E4450386

\$1,620

2 Bedroom, 2.00 Bathroom, 850 sqft

Rental on 0.00 Acres

Rutherford (Edmonton), Edmonton, AB

Discover a modern living experience in the renovated apartment featuring vinyl plank flooring and in-suite laundry. It includes 2 bedrooms with Den and 2 full bathrooms. You can move in September 1st. Rent is \$1620 + Electricity. Enjoy convenient underground parking and including enclosed storage. This south-facing unit offers plenty of natural light.

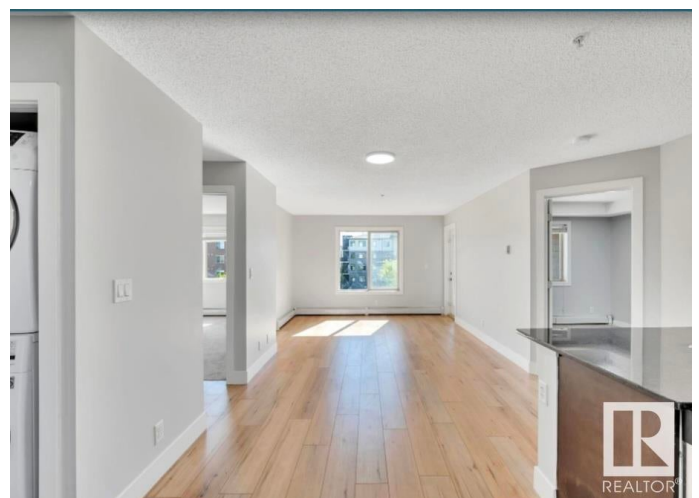
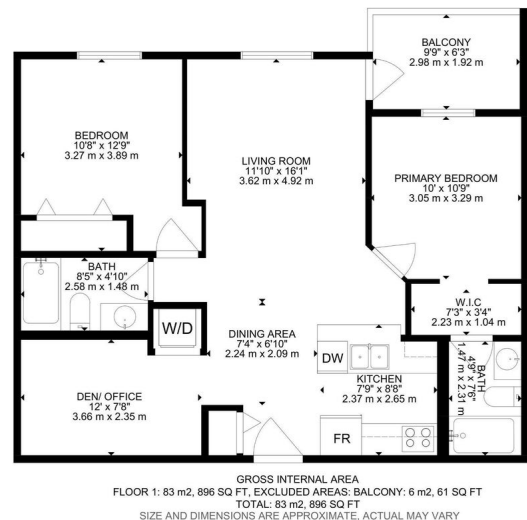
Built in 2011

Essential Information

MLS® #	E4450386
Price	\$1,620
Bedrooms	2
Bathrooms	2.00
Full Baths	2
Square Footage	850
Acres	0.00
Year Built	2011
Type	Rental
Style	Single Level Apartment
Status	Active

Community Information

Address	306 11820 22
Area	Edmonton
Subdivision	Rutherford (Edmonton)



City Edmonton
County ALBERTA
Province AB
Postal Code T6W 2A2

Amenities

Parking Parkade

Interior

Appliances Dishwasher-Built-In, Garage Opener, Microwave Hood Fan, Refrigerator, Stacked Washer/Dryer, Stove-Electric

Additional Information

Date Listed July 30th, 2025

Days on Market 3

Zoning Zone 55

DATA IS DEEMED RELIABLE BUT IS NOT GUARANTEED ACCURATE BY THE REALTORS® ASSOCIATION OF EDMONTON. COPYRIGHT 2025 BY THE REALTORS® ASSOCIATION OF EDMONTON. ALL RIGHTS RESERVED. Trademarks are owned or controlled by the Canadian Real Estate Association (CREA) and identify real estate professionals who are members of CREA (REALTOR®, REALTORS®) and/or the quality of services they provide (MLS®, Multiple Listing Service®)

Listing information last updated on August 2nd, 2025 at 1:17pm MDT