

\$115,000 - 302 6204 180 Street, Edmonton

MLS® #E4450266

\$115,000

1 Bedroom, 1.00 Bathroom, 690 sqft

Condo / Townhouse on 0.00 Acres

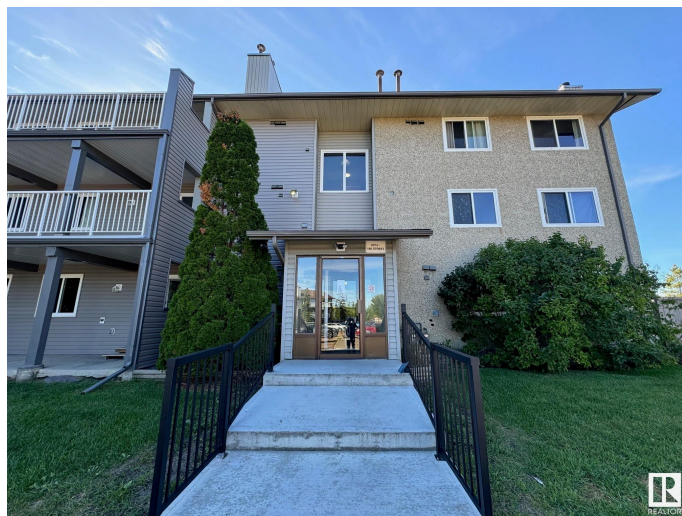
Ormsby Place, Edmonton, AB

Top-floor corner unit with all the feels! Soak up the sunshine in this bright, spacious retreat complete with a cozy wood-burning fireplace for those cool nights. The bedroom features a walk-through closet with a cheater door to the bathroom. The kitchen shines with gorgeous countertops and plenty of natural light from the big, beautiful windows. Bonus: your own furnace and hot water tankâ€”meaning youâ€™re in charge of your utilities. At Parkside Grande, natureâ€™s at your doorstep with sprawling green spaces, walking trails, and playgrounds right out back. Whether youâ€™re strolling, jogging, or just relaxing, itâ€™s all here. Plus, youâ€™re only minutes to the Henday and West Edmonton Mallâ€”perfect for commuters and shopaholics.

Built in 1980

Essential Information

MLS® #	E4450266
Price	\$115,000
Bedrooms	1
Bathrooms	1.00
Full Baths	1
Square Footage	690
Acres	0.00
Year Built	1980



Type	Condo / Townhouse
Sub-Type	Lowrise Apartment
Style	Single Level Apartment
Status	Active

Community Information

Address	302 6204 180 Street
Area	Edmonton
Subdivision	Ormsby Place
City	Edmonton
County	ALBERTA
Province	AB
Postal Code	T5T 3J9

Amenities

Amenities	On Street Parking, Closet Organizers, Detectors Smoke, Intercom, No Animal Home, No Smoking Home, Parking-Visitor
Parking	Stall

Interior

Appliances	Dishwasher-Built-In, Refrigerator, Stove-Electric
Heating	Forced Air-1, Natural Gas
Fireplaces	Brick Facing, Mantel
# of Stories	3
Stories	3
Has Basement	Yes
Basement	None, No Basement

Exterior

Exterior	Wood, Vinyl
Exterior Features	Backs Onto Park/Trees, Fenced, Golf Nearby, Playground Nearby, Public Transportation, Schools, Shopping Nearby, Ski Hill Nearby
Roof	Asphalt Shingles
Construction	Wood, Vinyl
Foundation	Concrete Perimeter

School Information

Elementary	H. E. Beriault School
------------	-----------------------

Additional Information

Date Listed	July 30th, 2025
Days on Market	2
Zoning	Zone 20
Condo Fee	\$324

DATA IS DEEMED RELIABLE BUT IS NOT GUARANTEED ACCURATE BY THE REALTORS® ASSOCIATION OF EDMONTON. COPYRIGHT 2025 BY THE REALTORS® ASSOCIATION OF EDMONTON. ALL RIGHTS RESERVED. Trademarks are owned or controlled by the Canadian Real Estate Association (CREA) and identify real estate professionals who are members of CREA (REALTOR®, REALTORS®) and/or the quality of services they provide (MLS®, Multiple Listing Service®)

Listing information last updated on August 1st, 2025 at 5:02pm MDT