

Courtesy Of Tammie L Savage Of MaxWell Progressive

## \$189,900 - 302 10555 83 Avenue, Edmonton

MLS® #E4449175

**\$189,900**

2 Bedroom, 1.00 Bathroom, 809 sqft

Condo / Townhouse on 0.00 Acres

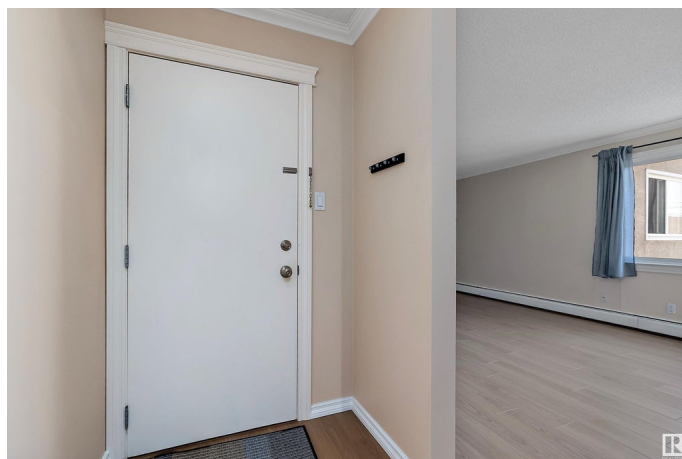
Strathcona, Edmonton, AB

You can have it all! Perfectly situated for university students, first-time home buyers, or young professionals, and just steps from vibrant Whyte Avenue, Strathcona Farmers market, the University of Alberta, and Edmonton's beautiful river valley and transit. Beautiful, top-floor 2-bedroom and 1 bath condo with low condo fees and in-suite laundry is sure to please. This unit has new laminate flooring throughout. The kitchen has beautiful wood cabinets, newer stainless steel appliances and Granite countertops. Nice size eating area and huge living room and 2 nice-sized bedrooms and 4 pc bath. Non smoking home. Don't miss this opportunity. Move in today and enjoy!

Built in 1968

### Essential Information

MLS® #	E4449175
Price	\$189,900
Bedrooms	2
Bathrooms	1.00
Full Baths	1
Square Footage	809
Acres	0.00
Year Built	1968
Type	Condo / Townhouse



Sub-Type	Lowrise Apartment
Style	Single Level Apartment
Status	Active

### Community Information

Address	302 10555 83 Avenue
Area	Edmonton
Subdivision	Strathcona
City	Edmonton
County	ALBERTA
Province	AB
Postal Code	T6E 2E1

### Amenities

Amenities	Detectors Smoke, No Smoking Home
Parking	Stall

### Interior

Appliances	Dishwasher-Built-In, Dryer, Fan-Ceiling, Microwave Hood Fan, Refrigerator, Stove-Electric, Washer, Window Coverings
Heating	Hot Water, Natural Gas
# of Stories	3
Stories	3
Has Basement	Yes
Basement	None, No Basement

### Exterior

Exterior	Wood, Brick, Stucco
Exterior Features	Back Lane, Flat Site, Landscaped, Level Land, Paved Lane, Public Transportation, Shopping Nearby
Roof	Tar & Gravel
Construction	Wood, Brick, Stucco
Foundation	Concrete Perimeter

### Additional Information

Date Listed	July 23rd, 2025
Days on Market	7
Zoning	Zone 15
Condo Fee	\$470

DATA IS DEEMED RELIABLE BUT IS NOT GUARANTEED ACCURATE BY THE REALTORS® ASSOCIATION OF EDMONTON. COPYRIGHT 2025 BY THE REALTORS® ASSOCIATION OF EDMONTON. ALL RIGHTS RESERVED.Trademarks are owned or controlled by the Canadian Real Estate Association (CREA) and identify real estate professionals who are members of CREA (REALTOR®, REALTORS®) and/or the quality of services they provide (MLS®, Multiple Listing Service®)

Listing information last updated on July 30th, 2025 at 8:17am MDT