

\$399,900 - 9132 Shaw Way, Edmonton

MLS® #E4449065

\$399,900

2 Bedroom, 2.50 Bathroom, 1,217 sqft

Single Family on 0.00 Acres

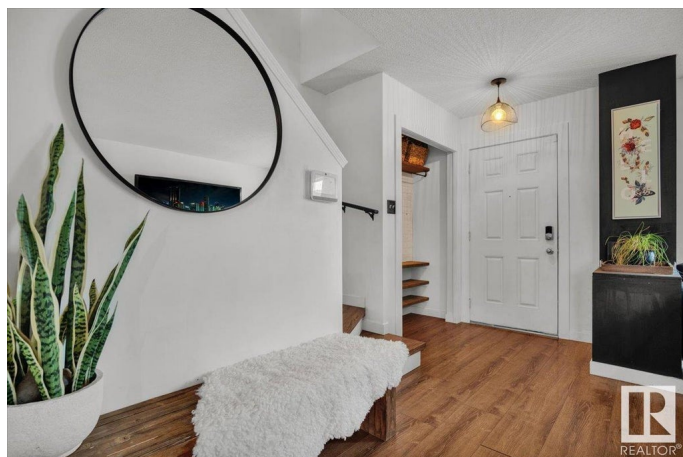
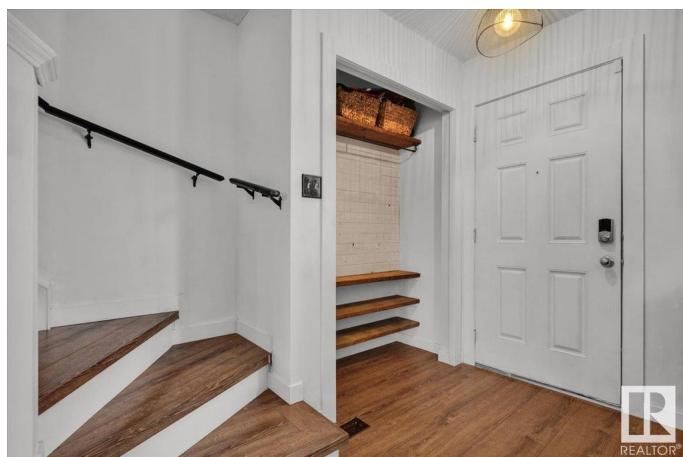
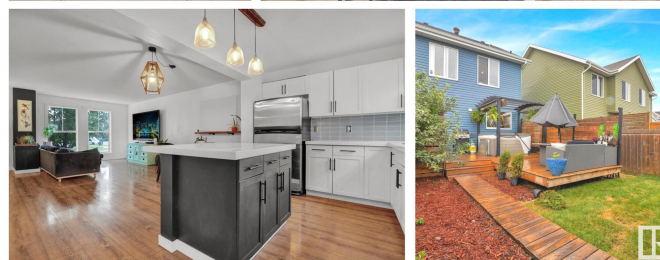
Summerside, Edmonton, AB

Your modern design tastes will be satisfied in this upgraded half duplex in Lake Summerside. Fresh coat of paint, linear modern baseboards, vinyl plank flooring, upgraded light fixtures, newer bathroom vanities. Bright & open layout makes for a great space for entertaining. White kitchen cabinets & upgraded counters accent the stainless steel appliances & the island is a perfect place to have coffee in the morning or an evening beverage. The basement has some framing & wired fore a media room, extra bedroom & bathroom rough in. The backyard is its own oasis with a pergola on the large deck with privacy panels in your fenced yard. Your cars will be happy year-round parked safely in the double garage. Your family & friends will love enjoying all the amenities at the Beach Club â€” SUP or kayak around the Lake then suntan at the Beach, play some beach volleyball or fish for Lake troutâ€”this is Lake Life and it could be yours!

Built in 2010

Essential Information

MLS® #	E4449065
Price	\$399,900
Bedrooms	2
Bathrooms	2.50



Full Baths	2
Half Baths	1
Square Footage	1,217
Acres	0.00
Year Built	2010
Type	Single Family
Sub-Type	Half Duplex
Style	2 Storey
Status	Active

Community Information

Address	9132 Shaw Way
Area	Edmonton
Subdivision	Summerside
City	Edmonton
County	ALBERTA
Province	AB
Postal Code	T6X 0S4

Amenities

Amenities	On Street Parking, Club House, Deck, Lake Privileges, Recreation Room/Centre, Tennis Courts, See Remarks
Parking Spaces	2
Parking	Double Garage Detached

Interior

Interior Features	ensuite bathroom
Appliances	Dishwasher-Built-In, Dryer, Hood Fan, Refrigerator, Stove-Electric, Washer
Heating	Forced Air-1, Natural Gas
Stories	2
Has Basement	Yes
Basement	Full, Unfinished

Exterior

Exterior	Wood, Vinyl
Exterior Features	Back Lane, Beach Access, Boating, Fenced, Golf Nearby, Lake Access Property, Landscaped, Picnic Area, Playground Nearby, Public Transportation, Recreation Use, Schools, Shopping Nearby, See Remarks, Private Park Access

Roof	Asphalt Shingles
Construction	Wood, Vinyl
Foundation	Concrete Perimeter

School Information

Elementary	Michael Strembitsky K-6
Middle	Michael Strembitsky 7-9
High	J.Percy Page/Holy Trinity

Additional Information

Date Listed	July 22nd, 2025
Days on Market	7
Zoning	Zone 53
HOA Fees	453.02
HOA Fees Freq.	Annually

DATA IS DEEMED RELIABLE BUT IS NOT GUARANTEED ACCURATE BY THE REALTORS® ASSOCIATION OF EDMONTON. COPYRIGHT 2025 BY THE REALTORS® ASSOCIATION OF EDMONTON. ALL RIGHTS RESERVED.Trademarks are owned or controlled by the Canadian Real Estate Association (CREA) and identify real estate professionals who are members of CREA (REALTOR®, REALTORS®) and/or the quality of services they provide (MLS®, Multiple Listing Service®)

Listing information last updated on July 29th, 2025 at 8:47am MDT