

# \$144,900 - 202 11325 103 Avenue, Edmonton

MLS® #E4448870

**\$144,900**

1 Bedroom, 1.00 Bathroom, 611 sqft  
Condo / Townhouse on 0.00 Acres

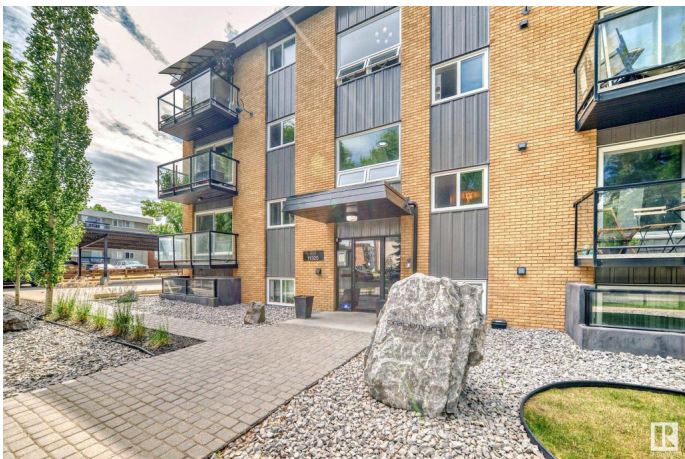
W&hkw&antwin, Edmonton, AB

Looking for your first home? This beautifully renovated 1-bedroom condo is ready to welcome you! Overlooking scenic Kitchener Park with a sunny west view, this home is bright, inviting, and move-in ready so you can settle in without a worry. Large windows fill the space with natural light, and the wonderful balcony is the perfect spot to relax, sip coffee, or watch the sunset. Youâ€™ll love the modern kitchen featuring new cabinets, counters, appliances, and backsplash, along with a fresh, bright bathroom with crisp white tile and flooring. The generous bedroom also overlooks the park, creating a peaceful retreat. Practical touches like in-suite laundry, ample storage, and the closest parking stall to the front door make daily life easy. With shops, coffee, groceries, and restaurants just a block away, this home blends comfort, convenience, and valueâ€”making homeownership closer than you think! Exceptional value is being offered so do not sit this one out!

Built in 1971

## Essential Information

MLS® #	E4448870
Price	\$144,900
Bedrooms	1
Bathrooms	1.00



Full Baths	1
Square Footage	611
Acres	0.00
Year Built	1971
Type	Condo / Townhouse
Sub-Type	Lowrise Apartment
Style	Single Level Apartment
Status	Active

### Community Information

Address	202 11325 103 Avenue
Area	Edmonton
Subdivision	W&#248;hkw&#223;nt&#227;win
City	Edmonton
County	ALBERTA
Province	AB
Postal Code	T5K 0S3

### Amenities

Amenities	Detectors Smoke, No Smoking Home
Parking Spaces	1
Parking	Stall

### Interior

Appliances	Dishwasher-Built-In, Microwave Hood Fan, Refrigerator, Stacked Washer/Dryer, Stove-Electric, Window Coverings
Heating	Baseboard, Natural Gas
# of Stories	4
Stories	1
Has Basement	Yes
Basement	None, No Basement

### Exterior

Exterior	Wood, Brick
Exterior Features	Corner Lot, Flat Site, Golf Nearby, Landscaped, Picnic Area, Playground Nearby, Public Transportation, Schools, Shopping Nearby, View Downtown
Roof	Tar & Gravel
Construction	Wood, Brick

Foundation                      Concrete Perimeter

**Additional Information**

Date Listed                      July 20th, 2025  
Days on Market                58  
Zoning                              Zone 12  
Condo Fee                        \$454

DATA IS DEEMED RELIABLE BUT IS NOT GUARANTEED ACCURATE BY THE REALTORS® ASSOCIATION OF EDMONTON. COPYRIGHT 2025 BY THE REALTORS® ASSOCIATION OF EDMONTON. ALL RIGHTS RESERVED.Trademarks are owned or controlled by the Canadian Real Estate Association (CREA) and identify real estate professionals who are members of CREA (REALTOR®, REALTORS®) and/or the quality of services they provide (MLS®, Multiple Listing Service®)  
Listing information last updated on September 16th, 2025 at 6:47pm MDT