

\$1,350,000 - 690 Henderson Street, Edmonton

MLS® #E4448661

\$1,350,000

7 Bedroom, 5.50 Bathroom, 3,165 sqft

Single Family on 0.00 Acres

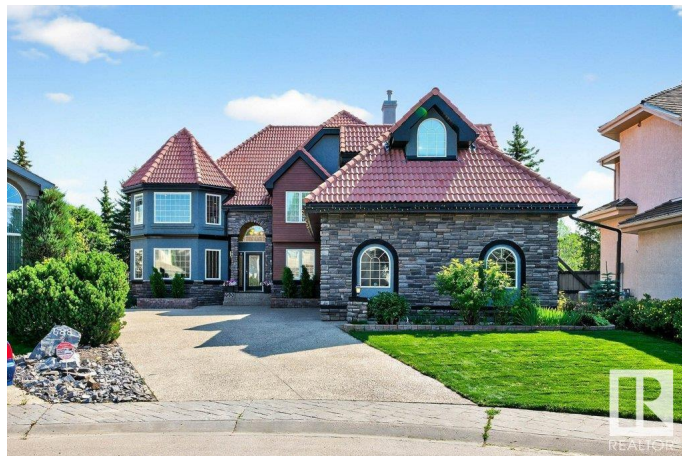
Henderson Estates, Edmonton, AB

Magnificent 3000 plus sqft estate/multi generational home in Henderson Estates with mature trees on a large pie lot! The luxurious home features a triple car garage and finishes like stucco, stone and a clay tile roof. The interior has a vaulted foyer with curved staircase and the main floor includes a living rm, family rm, nook, kitchen plus a den/bedroom. The upper floor has 4 large bedrooms including a gorgeous master suite complete with jetted tub and walk in closet. The fully developed basement has a full kitchen, 2 bedrooms, a bath, rec room and gym area. The home has been well maintained and has plenty of upgrades like central AC, granite counters, hardwood, and a sprinkler system.

Built in 1999

Essential Information

MLS® #	E4448661
Price	\$1,350,000
Bedrooms	7
Bathrooms	5.50
Full Baths	5
Half Baths	1
Square Footage	3,165
Acres	0.00



Year Built	1999
Type	Single Family
Sub-Type	Detached Single Family
Style	2 Storey
Status	Active

Community Information

Address	690 Henderson Street
Area	Edmonton
Subdivision	Henderson Estates
City	Edmonton
County	ALBERTA
Province	AB
Postal Code	T6R 2R8

Amenities

Amenities	Air Conditioner, Closet Organizers, Deck, No Smoking Home, Walkout Basement
Parking	Triple Garage Attached

Interior

Interior Features	ensuite bathroom
Appliances	Air Conditioning-Central, Dishwasher-Built-In, Dryer, Hood Fan, Stove-Electric, Stove-Gas, Washer, Refrigerators-Two, Dishwasher-Two
Heating	Forced Air-1, Natural Gas
Stories	3
Has Suite	Yes
Has Basement	Yes
Basement	Full, Finished

Exterior

Exterior	Wood, Composition, Stone, Stucco
Exterior Features	Cul-De-Sac, Fenced, Landscaped, Park/Reserve, Playground Nearby, Schools, Shopping Nearby, Treed Lot
Roof	Clay Tile
Construction	Wood, Composition, Stone, Stucco
Foundation	Concrete Perimeter

Additional Information

Date Listed	July 18th, 2025
-------------	-----------------

Days on Market	9
Zoning	Zone 14
HOA Fees	250
HOA Fees Freq.	Annually

DATA IS DEEMED RELIABLE BUT IS NOT GUARANTEED ACCURATE BY THE REALTORS® ASSOCIATION OF EDMONTON. COPYRIGHT 2025 BY THE REALTORS® ASSOCIATION OF EDMONTON. ALL RIGHTS RESERVED. Trademarks are owned or controlled by the Canadian Real Estate Association (CREA) and identify real estate professionals who are members of CREA (REALTOR®, REALTORS®) and/or the quality of services they provide (MLS®, Multiple Listing Service®)

Listing information last updated on July 27th, 2025 at 7:32pm MDT