

\$240,000 - 102 394 Windermere Road, Edmonton

MLS® #E4448458

\$240,000

2 Bedroom, 2.00 Bathroom, 825 sqft

Condo / Townhouse on 0.00 Acres

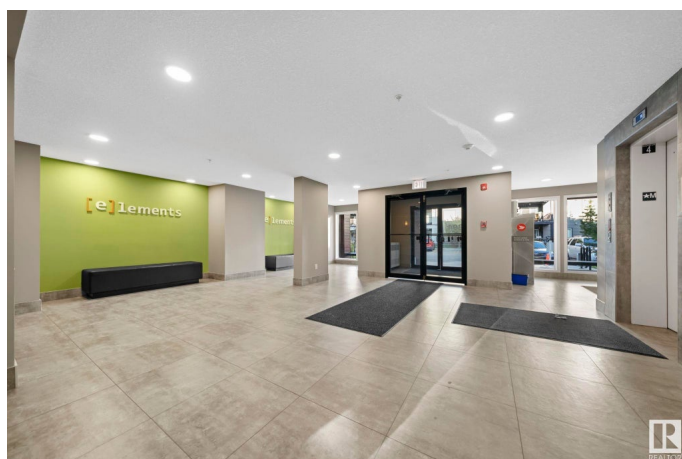
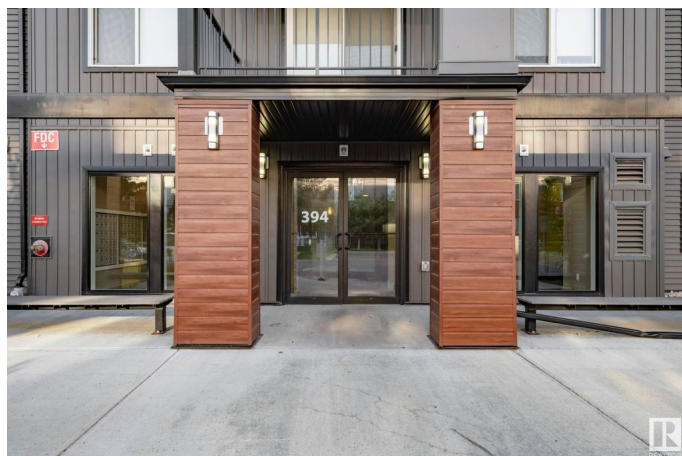
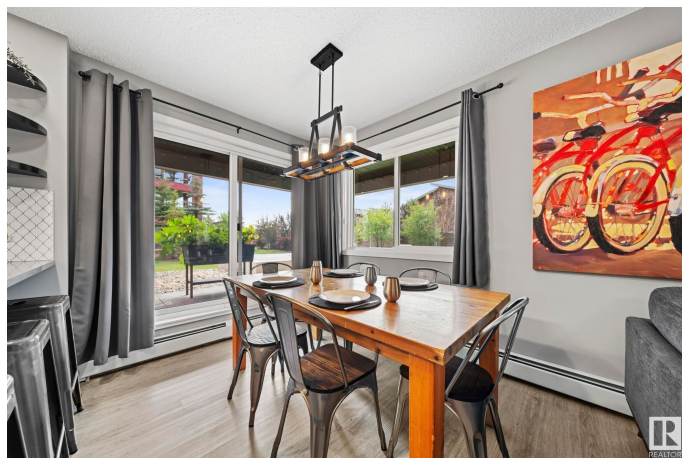
Windermere, Edmonton, AB

Prepare to be delighted by this rare 2bd/2ba ground floor corner unit that feels more like a private bungalow! Bright and stylish with two-tone kitchen cabinets, quartz countertops and upgraded lighting, it shows like new. The smart layout includes spacious a primary with ensuite, a generous front closet and large pantry. The real showstopper? A huge wraparound patio- mostly covered and backing onto greenspace- your own retreat! Includes two titled parking spots (one underground, one surface). Just steps from everything you need: shopping, dining, schools, recreation and beautiful river valley trails. Ideal for young families, students, professionals, downsizers and investors alike. Do not miss this Windermere gem!

Built in 2018

Essential Information

| | |
|----------------|-----------|
| MLS® # | E4448458 |
| Price | \$240,000 |
| Bedrooms | 2 |
| Bathrooms | 2.00 |
| Full Baths | 2 |
| Square Footage | 825 |
| Acres | 0.00 |
| Year Built | 2018 |



| | |
|----------|------------------------|
| Type | Condo / Townhouse |
| Sub-Type | Lowrise Apartment |
| Style | Single Level Apartment |
| Status | Active |

Community Information

| | |
|-------------|-------------------------|
| Address | 102 394 Windermere Road |
| Area | Edmonton |
| Subdivision | Windermere |
| City | Edmonton |
| County | ALBERTA |
| Province | AB |
| Postal Code | T6W 0R1 |

Amenities

| | |
|----------------|--|
| Amenities | No Animal Home, No Smoking Home, Parking-Plug-Ins, Parking-Visitor, Patio, Vinyl Windows |
| Parking Spaces | 2 |
| Parking | Stall, Underground |

Interior

| | |
|-------------------|---|
| Interior Features | ensuite bathroom |
| Appliances | Dishwasher-Built-In, Microwave Hood Fan, Refrigerator, Stacked Washer/Dryer, Stove-Electric |
| Heating | Baseboard, Natural Gas |
| # of Stories | 4 |
| Stories | 1 |
| Has Basement | Yes |
| Basement | None, No Basement |

Exterior

| | |
|-------------------|--|
| Exterior | Wood, Vinyl |
| Exterior Features | Golf Nearby, Landscaped, Low Maintenance Landscape, Playground Nearby, Public Transportation, Schools, Shopping Nearby |
| Roof | Asphalt Shingles |
| Construction | Wood, Vinyl |
| Foundation | Concrete Perimeter |

School Information

| | |
|------------|----------------------------|
| Elementary | Dan. Woodall, St.JohnXXIII |
|------------|----------------------------|

| | |
|--------|----------------------------|
| Middle | Riverbend, St.JohnXXIII |
| High | Lil. Osborn, Margaret Mary |

Additional Information

| | |
|----------------|-----------------|
| Date Listed | July 18th, 2025 |
| Days on Market | 9 |
| Zoning | Zone 56 |
| Condo Fee | \$505 |

DATA IS DEEMED RELIABLE BUT IS NOT GUARANTEED ACCURATE BY THE REALTORS® ASSOCIATION OF EDMONTON. COPYRIGHT 2025 BY THE REALTORS® ASSOCIATION OF EDMONTON. ALL RIGHTS RESERVED.Trademarks are owned or controlled by the Canadian Real Estate Association (CREA) and identify real estate professionals who are members of CREA (REALTOR®, REALTORS®) and/or the quality of services they provide (MLS®, Multiple Listing Service®)

Listing information last updated on July 27th, 2025 at 10:02am MDT