

## \$274,900 - 408 320 Ambleside Link, Edmonton

MLS® #E4448410

**\$274,900**

2 Bedroom, 2.00 Bathroom, 860 sqft

Condo / Townhouse on 0.00 Acres

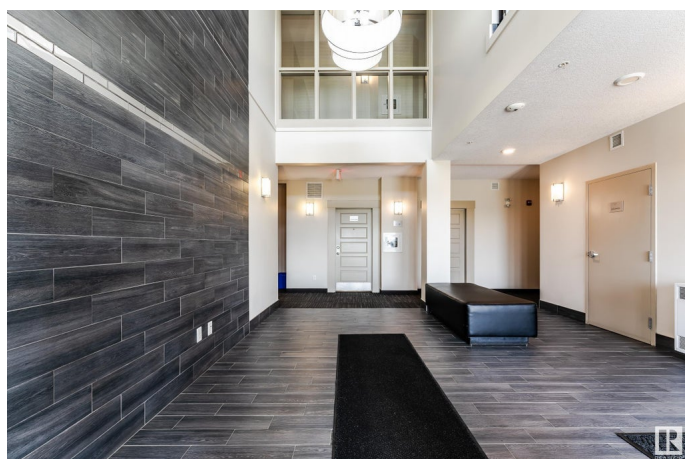
Ambleside, Edmonton, AB

Welcome to your new home in the desirable Ambleside! TWO TITLED PARKINGS. This stunning 9ft ceiling 2 bedroom 2 bathroom unit offers the perfect combination of peace and convenience. Step inside and feel the warmth of natural sunlight. The en-suite master bedroom features a large window, double walk-through closets and an 3-piece en-suite. The unit also comes with a spacious living room and dining room with loaded of sunlights. One Heated Underground Parking with Storage, One Surface Parking, GYM, and Patio are all included. Don't miss out on this exceptional opportunity to own a beautiful and convenient home!

Built in 2014

### Essential Information

MLS® #	E4448410
Price	\$274,900
Bedrooms	2
Bathrooms	2.00
Full Baths	2
Square Footage	860
Acres	0.00
Year Built	2014
Type	Condo / Townhouse
Sub-Type	Lowrise Apartment



Style	Single Level Apartment
Status	Active

### Community Information

Address	408 320 Ambleside Link
Area	Edmonton
Subdivision	Ambleside
City	Edmonton
County	ALBERTA
Province	AB
Postal Code	T6W 2Z9

### Amenities

Amenities	No Animal Home, No Smoking Home, Patio
Parking	Heated, Underground

### Interior

Interior Features	ensuite bathroom
Appliances	Dishwasher-Built-In, Dryer, Microwave Hood Fan, Refrigerator, Stove-Electric, Washer, Window Coverings
Heating	Fan Coil, Natural Gas
# of Stories	4
Stories	4
Has Basement	Yes
Basement	None, No Basement

### Exterior

Exterior	Wood, Brick, Metal
Exterior Features	Playground Nearby, Public Transportation, Schools, Shopping Nearby
Roof	Asphalt Shingles
Construction	Wood, Brick, Metal
Foundation	Concrete Perimeter

### School Information

Elementary	Dr. Margaret-Ann Armour Sc
Middle	Dr. Margaret-Ann Armour Sc
High	Lillian Osborne School

### Additional Information

Date Listed	July 16th, 2025
-------------	-----------------

Days on Market	11
Zoning	Zone 56
Condo Fee	\$501

DATA IS DEEMED RELIABLE BUT IS NOT GUARANTEED ACCURATE BY THE REALTORS® ASSOCIATION OF EDMONTON. COPYRIGHT 2025 BY THE REALTORS® ASSOCIATION OF EDMONTON. ALL RIGHTS RESERVED. Trademarks are owned or controlled by the Canadian Real Estate Association (CREA) and identify real estate professionals who are members of CREA (REALTOR®, REALTORS®) and/or the quality of services they provide (MLS®, Multiple Listing Service®)

Listing information last updated on July 27th, 2025 at 10:02am MDT