

## \$530,000 - 6359 105a Street, Edmonton

MLS® #E4448256

**\$530,000**

4 Bedroom, 2.00 Bathroom, 1,251 sqft

Single Family on 0.00 Acres

Allendale, Edmonton, AB

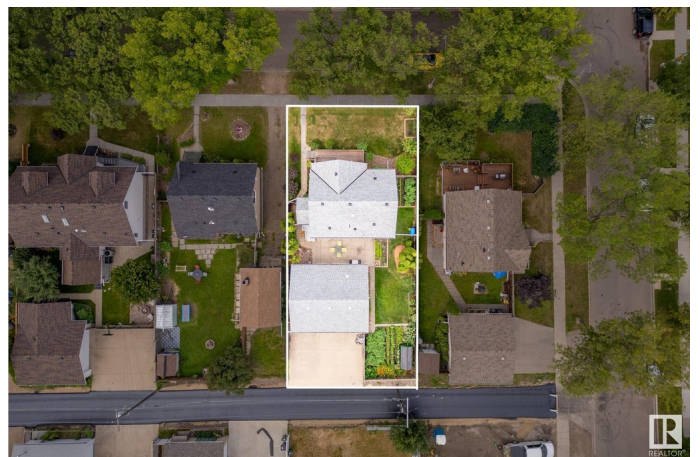
Timeless Charm! Welcome to this beautifully maintained 4-bedroom, 2-bathroom home, ideally located in the heart of Allendale—one of Edmonton’s most desirable and mature neighborhoods. Enjoy the greenspace from your large front porch. Inside, the thoughtful layout is warm and inviting, filled with natural light and timeless details that add to the home's enduring appeal. Upgrades include: shingles (3 years old), deck (7 years old), house repainted (3 years), newer windows, Hot water tank (4 years), Electrical panel 100amp. The east-facing backyard features a flourishing vegetable garden for those with a green thumb, and a heated workshop with an oversized double detached garage—ideal for hobbyists, artisans, or extra storage. This distinguished property is located within walking distance of Edmonton’s most acclaimed schools, including Mount Pleasant/ Allendale (Cogito program), Parkallen (Mandarin bilingual), Strathcona School, Mount Carmel (sports/stem) and the UofA. Walking distance to Whyte Ave.

Built in 1952

### Essential Information

MLS® # E4448256

Price \$530,000



Bedrooms	4
Bathrooms	2.00
Full Baths	2
Square Footage	1,251
Acres	0.00
Year Built	1952
Type	Single Family
Sub-Type	Detached Single Family
Style	1 and Half Storey
Status	Active

### Community Information

Address	6359 105a Street
Area	Edmonton
Subdivision	Allendale
City	Edmonton
County	ALBERTA
Province	AB
Postal Code	T6H 2P9

### Amenities

Amenities	Front Porch, Patio, Vaulted Ceiling, Workshop, Natural Gas BBQ Hookup
Parking	Double Garage Detached, Heated, Shop

### Interior

Appliances	Dishwasher-Built-In, Dryer, Garage Opener, Oven-Microwave, Storage Shed, Stove-Electric, Washer, Window Coverings, See Remarks, Refrigerators-Two, Garage Heater
Heating	Forced Air-1, Natural Gas
Stories	3
Has Basement	Yes
Basement	Full, Finished

### Exterior

Exterior	Wood, Vinyl
Exterior Features	Back Lane, Fenced, Golf Nearby, Landscaped, Playground Nearby, Public Transportation, Schools, Shopping Nearby, Vegetable Garden, See Remarks
Roof	Asphalt Shingles

Construction	Wood, Vinyl
Foundation	Concrete Perimeter

**School Information**

Elementary	Parkallan
Middle	Allendale
High	Scona

**Additional Information**

Date Listed	July 17th, 2025
Days on Market	10
Zoning	Zone 15

DATA IS DEEMED RELIABLE BUT IS NOT GUARANTEED ACCURATE BY THE REALTORS® ASSOCIATION OF EDMONTON. COPYRIGHT 2025 BY THE REALTORS® ASSOCIATION OF EDMONTON. ALL RIGHTS RESERVED.Trademarks are owned or controlled by the Canadian Real Estate Association (CREA) and identify real estate professionals who are members of CREA (REALTOR®, REALTORS®) and/or the quality of services they provide (MLS®, Multiple Listing Service®)

Listing information last updated on July 27th, 2025 at 3:32am MDT