

# **\$149,900 - 308 11441 Ellerslie Road, Edmonton**

MLS® #E4448175

**\$149,900**

1 Bedroom, 1.00 Bathroom, 663 sqft

Condo / Townhouse on 0.00 Acres

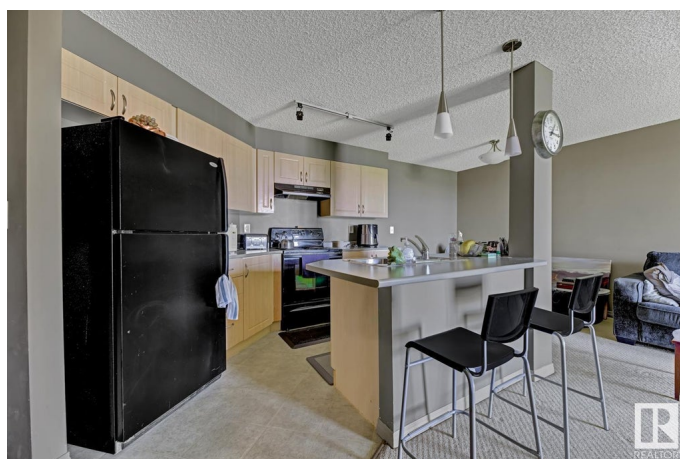
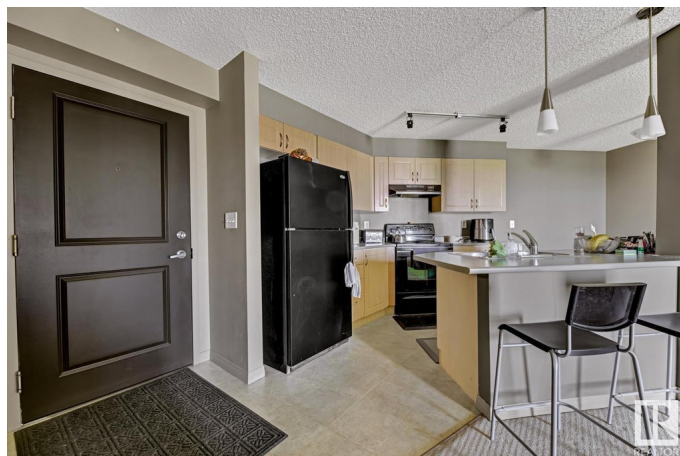
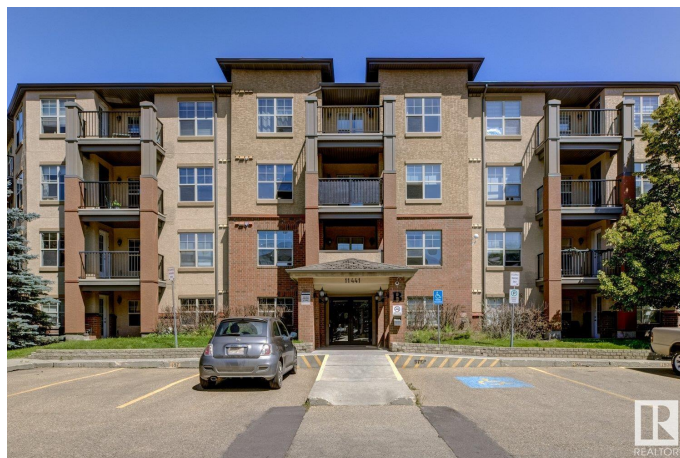
Rutherford (Edmonton), Edmonton, AB

**LIVE IN RUTHERFORD VILLAGE!** This one bedroom, 3rd floor north facing condo, is perfect for students or professionals. Features include: open concept, efficient layout, modern colors, walk through closet, covered balcony with gas BBQ, ensuite laundry, underground parking and storage room. Rutherford Village offers elevators, visitor parking and is pet friendly. All utilities are included in the condo fees including power. Located within walking distance to shopping and public transport. Quick access to Anthony Henday Drive, Calgary Trail and Edmonton Airport. **WELCOME HOME!**

Built in 2005

## **Essential Information**

MLS® #	E4448175
Price	\$149,900
Bedrooms	1
Bathrooms	1.00
Full Baths	1
Square Footage	663
Acres	0.00
Year Built	2005
Type	Condo / Townhouse
Sub-Type	Lowrise Apartment
Style	Single Level Apartment



Status	Active
--------	--------

### Community Information

Address	308 11441 Ellerslie Road
Area	Edmonton
Subdivision	Rutherford (Edmonton)
City	Edmonton
County	ALBERTA
Province	AB
Postal Code	T6W 1S9

### Amenities

Amenities	Intercom, Parking-Visitor, Storage-Locker Room, Vinyl Windows
Parking Spaces	1
Parking	Heated, Underground

### Interior

Appliances	Dishwasher-Built-In, Refrigerator, Stacked Washer/Dryer, Stove-Electric
Heating	Baseboard, Natural Gas
# of Stories	4
Stories	1
Has Basement	Yes
Basement	None, No Basement

### Exterior

Exterior	Wood, Brick, Stucco
Exterior Features	Flat Site, Golf Nearby, Landscaped, Park/Reserve, Public Transportation, Schools, Shopping Nearby
Roof	Asphalt Shingles
Construction	Wood, Brick, Stucco
Foundation	Concrete Perimeter

### Additional Information

Date Listed	July 17th, 2025
Days on Market	9
Zoning	Zone 55
Condo Fee	\$453

DATA IS DEEMED RELIABLE BUT IS NOT GUARANTEED ACCURATE BY THE REALTORS® ASSOCIATION OF EDMONTON. COPYRIGHT 2025 BY THE REALTORS® ASSOCIATION OF EDMONTON. ALL RIGHTS RESERVED.Trademarks are owned or controlled by the Canadian Real Estate Association (CREA) and identify real

estate professionals who are members of CREA (REALTOR®®, REALTORS®®) and/or the quality of services they provide (MLS®®, Multiple Listing Service®®)

Listing information last updated on July 26th, 2025 at 7:17pm MDT