

\$174,900 - 210 Oak Wood Drive, Edmonton

MLS® #E4446393

\$174,900

3 Bedroom, 2.00 Bathroom, 1,507 sqft

Land Lease Community on 0.00 Acres

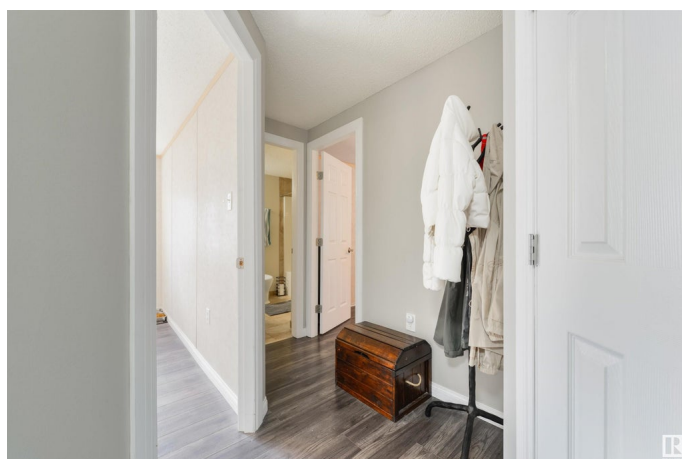
Maple Ridge (Edmonton), Edmonton, AB

Beautiful 2007 SRI Homes offers Three bedrooms and two full bathrooms. There are two generous sized rooms with access to a 4 PC Bathroom towards the front of the home. The Living, Dining & Kitchen area are open concept with vaulted ceilings. Laminate floors flow throughout the entire home. The Kitchen offers plenty of counterspace, stainless steel appliances and a corner pantry. There is a good sized Laundry Room as you move towards the Primary Bedroom. The Primary is massive and can accomodate any furniture arrangement. The Ensuite has a large vanity and Walk in shower. Upgrades include; New HWT, New Heat Tape, Composite deck, Central Vac, New blinds, New lighting and Kitchen faucet. The shed comes equipped with power.

Built in 2007

Essential Information

MLS® #	E4446393
Price	\$174,900
Bedrooms	3
Bathrooms	2.00
Full Baths	2
Square Footage	1,507
Acres	0.00
Year Built	2007



Type	Land Lease Community
Sub-Type	Detached Single Family
Style	Bungalow
Status	Active

Community Information

Address	210 Oak Wood Drive
Area	Edmonton
Subdivision	Maple Ridge (Edmonton)
City	Edmonton
County	ALBERTA
Province	AB
Postal Code	T6P 0A3

Amenities

Parking	2 Outdoor Stalls, Front Drive Access
---------	--------------------------------------

Interior

Interior Features	ensuite bathroom
Appliances	Dishwasher-Built-In, Dryer, Microwave Hood Fan, Refrigerator, Storage Shed, Stove-Electric, Vacuum Systems, Washer, Window Coverings
Heating	Forced Air-1, Natural Gas

Exterior

Exterior	Wood
Construction	Wood
Foundation	Block

Additional Information

Date Listed	July 7th, 2025
Days on Market	14
Zoning	Zone 42

DATA IS DEEMED RELIABLE BUT IS NOT GUARANTEED ACCURATE BY THE REALTORS® ASSOCIATION OF EDMONTON. COPYRIGHT 2025 BY THE REALTORS® ASSOCIATION OF EDMONTON. ALL RIGHTS RESERVED. Trademarks are owned or controlled by the Canadian Real Estate Association (CREA) and identify real estate professionals who are members of CREA (REALTOR®, REALTORS®) and/or the quality of services they provide (MLS®, Multiple Listing Service®)

Listing information last updated on July 21st, 2025 at 8:17pm MDT