

## \$799,999 - 413 Chappelle Drive, Edmonton

MLS® #E4446178

**\$799,999**

4 Bedroom, 3.50 Bathroom, 1,697 sqft

Single Family on 0.00 Acres

Chappelle Area, Edmonton, AB

Nestled on a sprawling 10,372 sqft lot, this elegant 4-bedroom, 3½-bath executive bungalow is designed for sophisticated comfort, with soaring 10-foot ceilings on the main floor and 9-foot ceilings in the fully finished lower level, where two additional bedrooms, a full bath, and a generous family room with a bar and fireplace create the perfect gathering space; warm cork flooring, a gas fireplace, and abundant natural light define the main-level living area, while the modern chef's kitchen—featuring stainless steel appliances, granite countertops, and a walk-through pantry—effortlessly blends culinary convenience with contemporary style; each primary-level bedroom includes a private ensuite for added luxury, and the backyard unveils a serene retreat: a large deck with Gazebo, a custom wood-fired stove, flourishing vegetable garden, mature fruit trees, and lush perennials that invite alfresco entertaining or quiet reflection amidst nature.

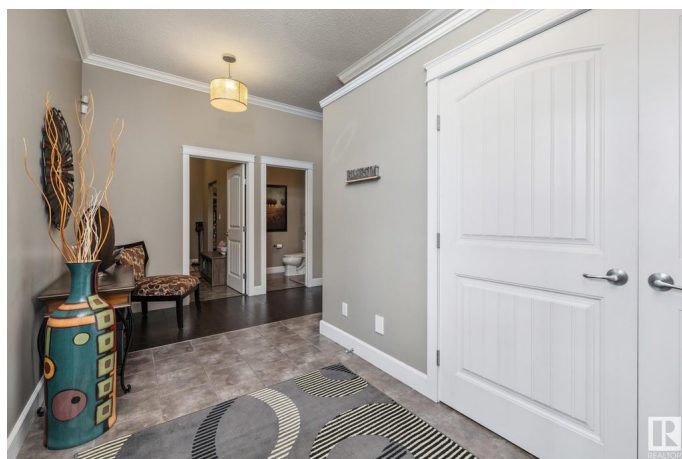
Built in 2011

### Essential Information

MLS® # E4446178

Price \$799,999

Bedrooms 4



Bathrooms	3.50
Full Baths	3
Half Baths	1
Square Footage	1,697
Acres	0.00
Year Built	2011
Type	Single Family
Sub-Type	Detached Single Family
Style	Bungalow
Status	Active

### Community Information

Address	413 Chappelle Drive
Area	Edmonton
Subdivision	Chappelle Area
City	Edmonton
County	ALBERTA
Province	AB
Postal Code	T6W 0Z3

### Amenities

Amenities	Carbon Monoxide Detectors, Ceiling 10 ft., Ceiling 9 ft., Deck, Detectors Smoke, Gazebo, No Animal Home, No Smoking Home, Wet Bar, Natural Gas BBQ Hookup, 9 ft. Basement Ceiling
Parking	Double Garage Attached, Insulated

### Interior

Interior Features	ensuite bathroom
Appliances	Air Conditioning-Central, Dishwasher-Built-In, Dryer, Garage Opener, Microwave Hood Fan, Refrigerator, Storage Shed, Stove-Electric, Vacuum System Attachments, Vacuum Systems, Washer, Window Coverings
Heating	Forced Air-1, Natural Gas
Fireplace	Yes
Fireplaces	Mantel, Tile Surround
Stories	2
Has Basement	Yes
Basement	Full, Finished

### Exterior

Exterior	Wood, Brick, Vinyl
Exterior Features	Cul-De-Sac, Fenced, Fruit Trees/Shrubs, Landscaped, Public Transportation, Schools, Shopping Nearby
Roof	Asphalt Shingles
Construction	Wood, Brick, Vinyl
Foundation	Concrete Perimeter

### School Information

Elementary	Garth Worthington School
Middle	Garth Worthington School
High	Dr. Anne Anderson High Sch

### Additional Information

Date Listed	July 4th, 2025
Days on Market	15
Zoning	Zone 55
HOA Fees	105
HOA Fees Freq.	Annually

DATA IS DEEMED RELIABLE BUT IS NOT GUARANTEED ACCURATE BY THE REALTORS® ASSOCIATION OF EDMONTON. COPYRIGHT 2025 BY THE REALTORS® ASSOCIATION OF EDMONTON. ALL RIGHTS RESERVED. Trademarks are owned or controlled by the Canadian Real Estate Association (CREA) and identify real estate professionals who are members of CREA (REALTOR®, REALTORS®) and/or the quality of services they provide (MLS®, Multiple Listing Service®)

Listing information last updated on July 19th, 2025 at 1:32pm MDT