

\$428,000 - 10226 147 Street, Edmonton

MLS® #E4445879

\$428,000

4 Bedroom, 2.00 Bathroom, 1,156 sqft

Single Family on 0.00 Acres

Grovenor, Edmonton, AB

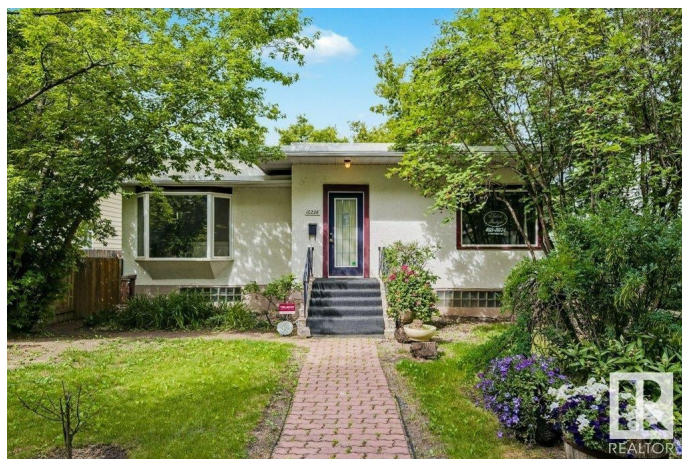
Welcome home to this unique and character-filled bungalow nestled in the heart of Grovenor—one of Edmonton's most desirable mature neighborhoods. Surrounded by tree-lined streets, parks, and trails, this home offers over 2,000 sq ft of total living space across two levels. The main floor features two bedrooms, currently set up as a hair salon and massage studio, making it perfect for a home-based business or easy conversion back to bedrooms. You'll love the old-world charm, original detailing, skylights offering natural light in living room and kitchen, original hardwood and cozy ambiance throughout. The fully finished basement adds two more bedrooms, electric sauna, ideal for family, guests, or rental potential. Whether you're drawn by the lifestyle of a walkable, nature-rich community, just 1 block from McKinnon Ravine, or seeking a home with versatile live-work options, this Grovenor gem is full of opportunity. The large RF3 zoned lot is also perfect for future redevelopment.

Built in 1950

Essential Information

MLS® # E4445879

Price \$428,000



Bedrooms	4
Bathrooms	2.00
Full Baths	2
Square Footage	1,156
Acres	0.00
Year Built	1950
Type	Single Family
Sub-Type	Detached Single Family
Style	Bungalow
Status	Active

Community Information

Address	10226 147 Street
Area	Edmonton
Subdivision	Grovenor
City	Edmonton
County	ALBERTA
Province	AB
Postal Code	T5N 3B9

Amenities

Amenities	Deck, No Animal Home, No Smoking Home
Parking	Double Garage Detached

Interior

Appliances	Air Conditioning-Central, Dishwasher-Built-In, Dryer, Garage Control, Garage Opener, Refrigerator, Stove-Gas, Washer, Window Coverings
Heating	Forced Air-1, Natural Gas
Fireplace	Yes
Fireplaces	Mantel
Stories	2
Has Basement	Yes
Basement	Full, Finished

Exterior

Exterior	Wood, Vinyl
Exterior Features	Back Lane, Fenced, Flat Site, Landscaped
Roof	Flat, Tar & Gravel
Construction	Wood, Vinyl

Foundation Concrete Perimeter

Additional Information

Date Listed July 4th, 2025

Days on Market 14

Zoning Zone 21

DATA IS DEEMED RELIABLE BUT IS NOT GUARANTEED ACCURATE BY THE REALTORS® ASSOCIATION OF EDMONTON. COPYRIGHT 2025 BY THE REALTORS® ASSOCIATION OF EDMONTON. ALL RIGHTS RESERVED.Trademarks are owned or controlled by the Canadian Real Estate Association (CREA) and identify real estate professionals who are members of CREA (REALTOR®, REALTORS®) and/or the quality of services they provide (MLS®, Multiple Listing Service®)

Listing information last updated on July 18th, 2025 at 7:17pm MDT