

\$359,000 - 108 2612 109 Street, Edmonton

MLS® #E4445758

\$359,000

2 Bedroom, 2.00 Bathroom, 940 sqft

Condo / Townhouse on 0.00 Acres

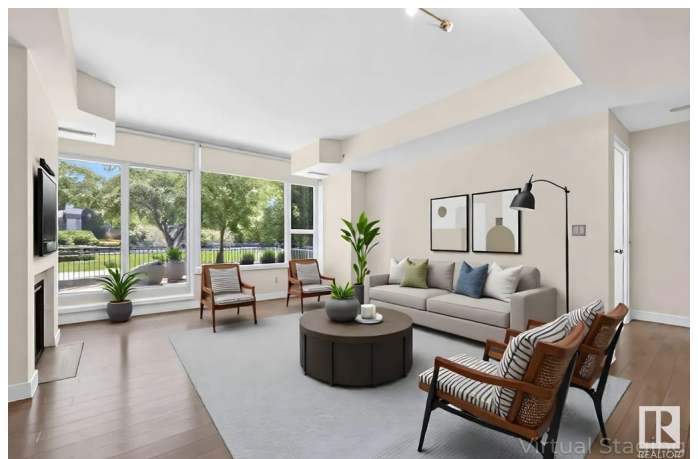
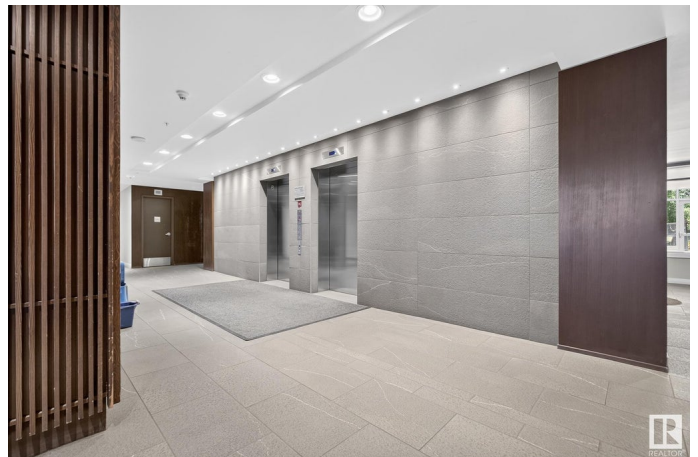
Ermineskin, Edmonton, AB

Regent Century Park is a modern high quality apartment condo with indoor parking, courtyards, amenities +++ and it's a short walk to the Century Park train station! Ideal 2 bedroom, 2 full bath floor plan with a bedroom and full bath on each side of the open central living area. Featuring engineered hardwood, neutral tones, granite counters, SS appliances, feature lighting & fireplace, marble floors & vanity tops, + more! Ground floor convenience for an active lifestyle + pet friendly building. This suite backs onto the Regent gated park with feature fountain & pond, (currently drained for maintenance). Dog park at the west side of Regent CP. Titled parking stall and large storage unit. All-in condo fee includes all utilities, maintenance costs, condo insurance, security + reserves for future costs. Immaculate, updated + move-in ready! See it for yourself, private fenced patio and yard space 24x40 ft with sunny south exposure, treed and small garden area.

Built in 2009

Essential Information

MLS® #	E4445758
Price	\$359,000
Bedrooms	2
Bathrooms	2.00



Full Baths	2
Square Footage	940
Acres	0.00
Year Built	2009
Type	Condo / Townhouse
Sub-Type	Lowrise Apartment
Style	Single Level Apartment
Status	Active

Community Information

Address	108 2612 109 Street
Area	Edmonton
Subdivision	Ermineskin
City	Edmonton
County	ALBERTA
Province	AB
Postal Code	T6J 3T1

Amenities

Amenities	On Street Parking, Air Conditioner, Carbon Monoxide Detectors, Ceiling 9 ft., Detectors Smoke, Dog Run-Fenced In, Exercise Room, No Animal Home, Parking-Visitor, Patio, Secured Parking, Security Door, Sprinkler System-Fire, Storage-Locker Room, Storage Cage, Natural Gas BBQ Hookup, Natural Gas Stove Hookup
Parking Spaces	1
Parking	Heated, Underground, See Remarks

Interior

Interior Features	ensuite bathroom
Appliances	Air Conditioning-Central, Dishwasher-Built-In, Garage Control, Hood Fan, Oven-Built-In, Oven-Microwave, Refrigerator, Stacked Washer/Dryer, Stove-Countertop Gas, Window Coverings
Heating	Fan Coil, Electric, Natural Gas
Fireplace	Yes
Fireplaces	Marble Surround, Vent Free, Wall Mount
# of Stories	7
Stories	1
Has Basement	Yes
Basement	None, See Remarks

Exterior

Exterior	Concrete, Brick, Metal, Stone
Exterior Features	Backs Onto Park/Trees, Fenced, Gated Community, Landscaped, Playground Nearby, Schools, Shopping Nearby, Treed Lot, Vegetable Garden, See Remarks, Private Park Access
Roof	Flat
Construction	Concrete, Brick, Metal, Stone
Foundation	Concrete Perimeter

Additional Information

Date Listed	July 4th, 2025
Days on Market	14
Zoning	Zone 16
Condo Fee	\$818

DATA IS DEEMED RELIABLE BUT IS NOT GUARANTEED ACCURATE BY THE REALTORS® ASSOCIATION OF EDMONTON. COPYRIGHT 2025 BY THE REALTORS® ASSOCIATION OF EDMONTON. ALL RIGHTS RESERVED.Trademarks are owned or controlled by the Canadian Real Estate Association (CREA) and identify real estate professionals who are members of CREA (REALTOR®, REALTORS®) and/or the quality of services they provide (MLS®, Multiple Listing Service®)

Listing information last updated on July 18th, 2025 at 4:17pm MDT