

# \$359,900 - 10912 155 Street, Edmonton

MLS® #E4444368

**\$359,900**

3 Bedroom, 2.00 Bathroom, 1,041 sqft  
Single Family on 0.00 Acres

High Park (Edmonton), Edmonton, AB

Excellent infill opportunity in High Park with this large 50x148 rectangular lot, ideal for future development. Located on a quiet street close High Park School, 156 St, 111 Ave, Yellowhead Trail, and downtown access, this property offers excellent potential. A prime west-end location known for infill growth, this lot combines size, shape, and location to support a strong long-term investment in one of Edmonton's evolving neighbourhoods.

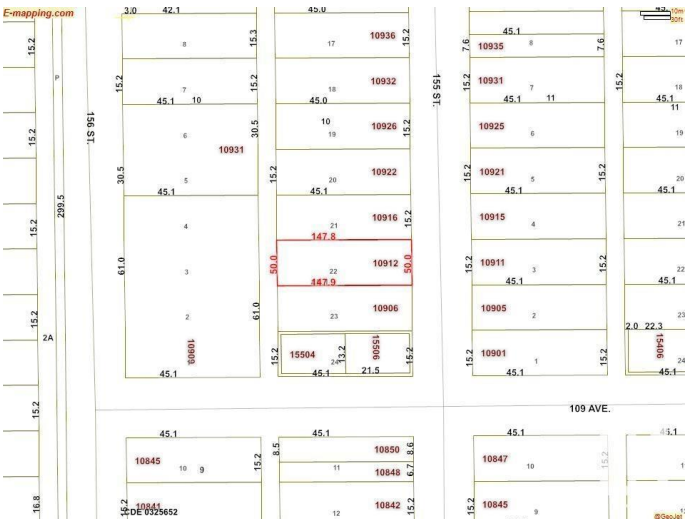
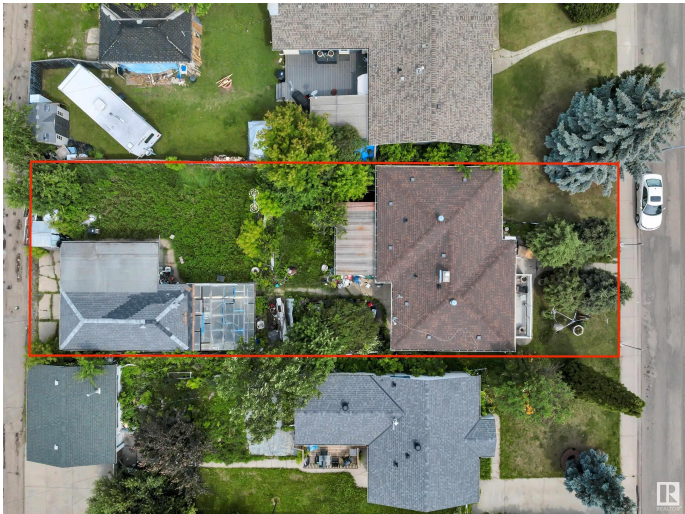
Built in 1958

## Essential Information

MLS® #	E4444368
Price	\$359,900
Bedrooms	3
Bathrooms	2.00
Full Baths	2
Square Footage	1,041
Acres	0.00
Year Built	1958
Type	Single Family
Sub-Type	Detached Single Family
Style	Bungalow
Status	Active

## Community Information

Address 10912 155 Street



Area	Edmonton
Subdivision	High Park (Edmonton)
City	Edmonton
County	ALBERTA
Province	AB
Postal Code	T5P 2N1

### **Amenities**

Amenities	Infill Property
Parking	Double Garage Detached

### **Interior**

Appliances	Dryer, Freezer, Washer, Refrigerators-Two, Stoves-Two
Heating	Forced Air-1, Natural Gas
Stories	2
Has Basement	Yes
Basement	Full, Finished

### **Exterior**

Exterior	Wood, Brick, Stucco
Exterior Features	Back Lane, Flat Site, Public Transportation, Schools, Shopping Nearby
Roof	Asphalt Shingles
Construction	Wood, Brick, Stucco
Foundation	Concrete Perimeter

### **Additional Information**

Date Listed	June 26th, 2025
Days on Market	22
Zoning	Zone 21

DATA IS DEEMED RELIABLE BUT IS NOT GUARANTEED ACCURATE BY THE REALTORS® ASSOCIATION OF EDMONTON. COPYRIGHT 2025 BY THE REALTORS® ASSOCIATION OF EDMONTON. ALL RIGHTS RESERVED. Trademarks are owned or controlled by the Canadian Real Estate Association (CREA) and identify real estate professionals who are members of CREA (REALTOR®, REALTORS®) and/or the quality of services they provide (MLS®, Multiple Listing Service®)

Listing information last updated on July 18th, 2025 at 8:17am MDT