

\$534,250 - 8519 181 Avenue, Edmonton

MLS® #E4444277

\$534,250

3 Bedroom, 2.50 Bathroom, 1,663 sqft

Single Family on 0.00 Acres

Klarvatten, Edmonton, AB

The Aspen 20 is a thoughtfully designed 1663 sq ft home that balances comfort and elegance. It features a double attached garage, separate side entrance, and 9' ceilings on the main and basement levels for an open, airy feel. Luxury Vinyl Plank flooring spans the main floor, offering durability and style. The kitchen includes an island with a flush eating ledge, undermount sink, quartz countertops, full-height tile backsplash, over-the-range microwave, and a spacious corner pantry. A half-bath and mudroom with built-in bench add functionality. Recessed SLD lighting and pendant lights over the island enhance the warm, inviting atmosphere. Upstairs, a versatile bonus room offers space for work or play. The primary suite includes a walk-in closet and 4-piece ensuite with double sinks. Two additional bedrooms, a 3-piece bath, and a laundry room complete the upper level. Upgraded railings, basement rough-in plumbing, and Sterlingâ€™s Signature Specification are included.

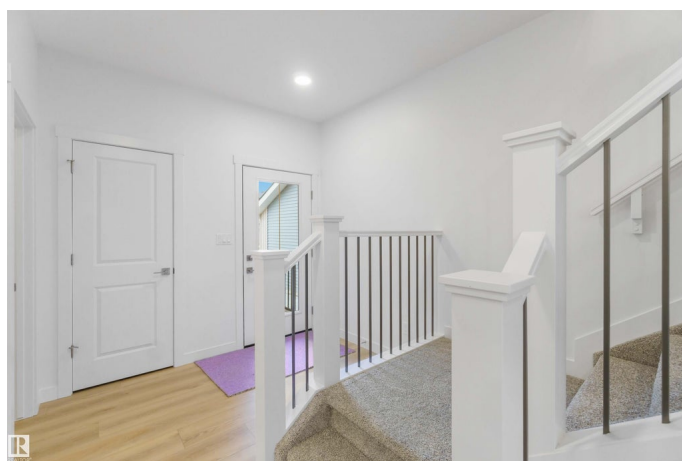
Built in 2025

Essential Information

MLS® # E4444277

Price \$534,250

Bedrooms 3



Bathrooms	2.50
Full Baths	2
Half Baths	1
Square Footage	1,663
Acres	0.00
Year Built	2025
Type	Single Family
Sub-Type	Detached Single Family
Style	2 Storey
Status	Active

Community Information

Address	8519 181 Avenue
Area	Edmonton
Subdivision	Klarvatten
City	Edmonton
County	ALBERTA
Province	AB
Postal Code	T5Z 0E3

Amenities

Amenities	Ceiling 9 ft., Detectors Smoke, No Animal Home, No Smoking Home, Smart/Program. Thermostat, Television Connection, 9 ft. Basement Ceiling
Parking	Double Garage Attached, Over Sized

Interior

Interior Features	ensuite bathroom
Appliances	Garage Control, Garage Opener, None
Heating	Forced Air-1, Natural Gas
Fireplace	Yes
Fireplaces	Tile Surround
Stories	2
Has Basement	Yes
Basement	Full, Unfinished

Exterior

Exterior	Wood, Vinyl
Exterior Features	No Through Road, Playground Nearby, Public Transportation, Schools,

	Shopping Nearby
Roof	Asphalt Shingles
Construction	Wood, Vinyl
Foundation	Concrete Perimeter

Additional Information

Date Listed	June 25th, 2025
Days on Market	84
Zoning	Zone 28

DATA IS DEEMED RELIABLE BUT IS NOT GUARANTEED ACCURATE BY THE REALTORS® ASSOCIATION OF EDMONTON. COPYRIGHT 2025 BY THE REALTORS® ASSOCIATION OF EDMONTON. ALL RIGHTS RESERVED. Trademarks are owned or controlled by the Canadian Real Estate Association (CREA) and identify real estate professionals who are members of CREA (REALTOR®, REALTORS®) and/or the quality of services they provide (MLS®, Multiple Listing Service®)

Listing information last updated on September 17th, 2025 at 8:47am MDT