

\$424,900 - 1306 53102 Rge Road 40, Rural Parkland County

MLS® #E4442557

\$424,900

2 Bedroom, 1.00 Bathroom, 629 sqft

Rural on 0.54 Acres

Moonlight Bay (Parkland), Rural Parkland County, AB

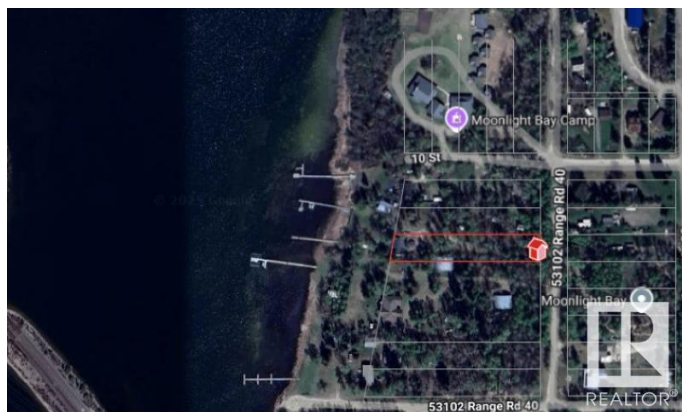
Lakefront Dream! Excellent opportunity to own a great property in Moonlight Bay. This prime 1/2 acre treed lot with lake access transports you away from the city into a tranquil setting with a quick commute from Edmonton for those weekend getaways. This property includes a 3-season cottage, drilled well, and dock. Keep it rustic or design your forever dream home - the potential is endless.

Built in 1963

Essential Information

MLS® #	E4442557
Price	\$424,900
Bedrooms	2
Bathrooms	1.00
Full Baths	1
Square Footage	629
Acres	0.54
Year Built	1963
Type	Rural
Sub-Type	Cottage
Style	Bungalow
Status	Active

Community Information



Address	1306 53102 Rge Road 40
Area	Rural Parkland County
Subdivision	Moonlight Bay (Parkland)
City	Rural Parkland County
County	ALBERTA
Province	AB
Postal Code	T0E 2Y0

Amenities

Features	Fire Pit
----------	----------

Interior

Heating	Wood Stove, Wood
Stories	1
Has Basement	Yes
Basement	None, No Basement

Exterior

Exterior	Wood
Exterior Features	Backs Onto Lake, Lake Access Property, Lake View
Construction	Wood
Foundation	See Remarks

Additional Information

Date Listed	June 15th, 2025
Days on Market	2
Zoning	Zone 93

DATA IS DEEMED RELIABLE BUT IS NOT GUARANTEED ACCURATE BY THE REALTORS® ASSOCIATION OF EDMONTON. COPYRIGHT 2025 BY THE REALTORS® ASSOCIATION OF EDMONTON. ALL RIGHTS RESERVED. Trademarks are owned or controlled by the Canadian Real Estate Association (CREA) and identify real estate professionals who are members of CREA (REALTOR®, REALTORS®) and/or the quality of services they provide (MLS®, Multiple Listing Service®)

Listing information last updated on June 16th, 2025 at 9:31pm MDT