

## \$10,000 - Rge Rd 90, Rural Saddle Hills County

MLS® #E4441833

**\$10,000**

0 Bedroom, 0.00 Bathroom,  
Rural on 155.32 Acres

None, Rural Saddle Hills County, AB

Farm Grazing License for sale by Auction -  
Bidding starts June 20 at 9:00am. Lots begin  
closing at 2pm June 26, 2025. Listed price is  
starting bid/reserve for auction and has no  
bearing on final sale price or actual value.  
LAND SIZE: 62.9 hectares / 155.32 Acres.  
Carrying capacity is estimated as 30 AUMs  
(Animal Unit Months) of use annually. Appears  
to be perimeter fenced in fair condition, lease  
fenced, gate access in southeast corner.  
LEGAL: SE-24-82-9-W6

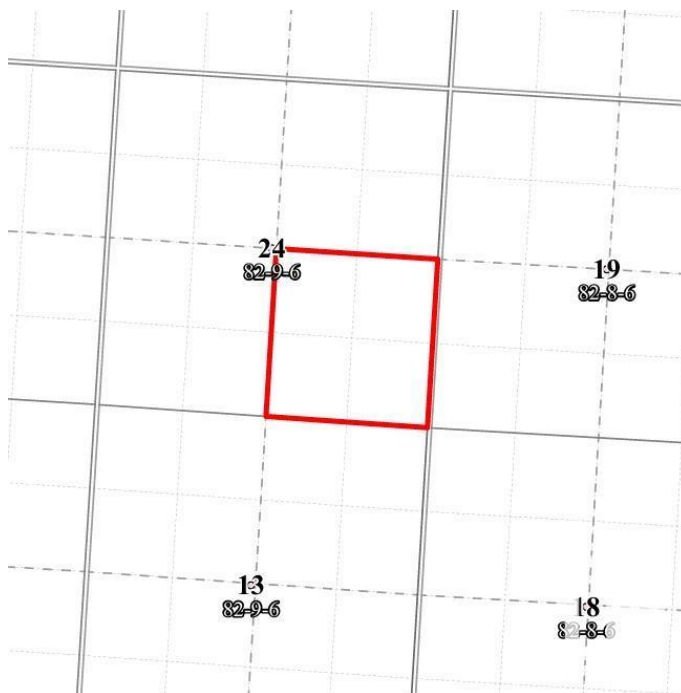


### Essential Information

MLS® #	E4441833
Price	\$10,000
Bathrooms	0.00
Acres	155.32
Type	Rural
Sub-Type	Vacant Lot/Land
Status	Active

### Community Information

Address	Rge Rd 90
Area	Rural Saddle Hills County
Subdivision	None
City	Rural Saddle Hills County
County	ALBERTA
Province	AB



Postal Code            T0H 2A0

**Exterior**

Exterior Features    See Remarks

**Additional Information**

Date Listed            June 11th, 2025

Days on Market      55

Zoning                Zone 60

DATA IS DEEMED RELIABLE BUT IS NOT GUARANTEED ACCURATE BY THE REALTORS® ASSOCIATION OF EDMONTON. COPYRIGHT 2025 BY THE REALTORS® ASSOCIATION OF EDMONTON. ALL RIGHTS RESERVED.Trademarks are owned or controlled by the Canadian Real Estate Association (CREA) and identify real estate professionals who are members of CREA (REALTOR®, REALTORS®) and/or the quality of services they provide (MLS®, Multiple Listing Service®)

Listing information last updated on August 5th, 2025 at 12:02am MDT