

## \$419,900 - 8745 155 Street, Edmonton

MLS® #E4441287

**\$419,900**

4 Bedroom, 2.00 Bathroom, 1,064 sqft

Single Family on 0.00 Acres

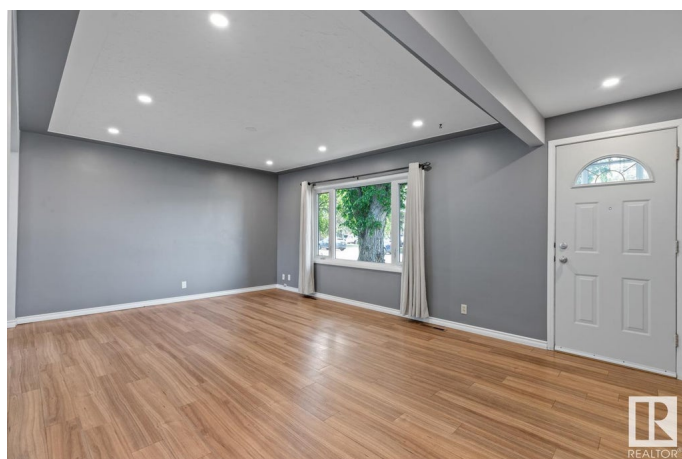
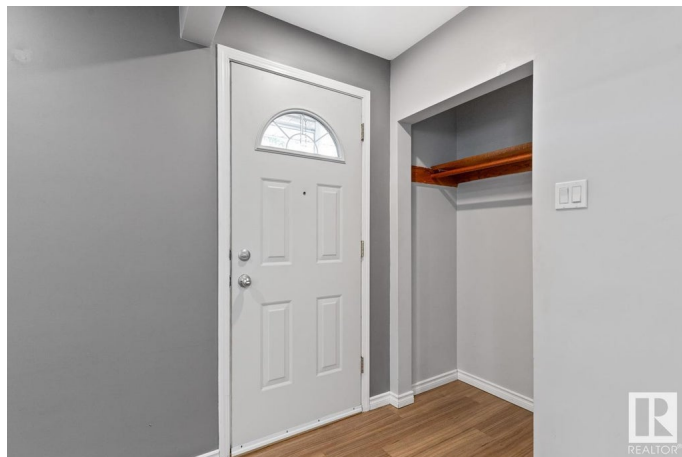
Jasper Park, Edmonton, AB

This Jasper Park gem is a beaut! The last several years have seen the introduction of flooring, (some) appliances, LED pot lighting, shingles, bathroom updating, HWT, chain link fence, even the garage door, to name but a few! With three bedrooms on the Main, and another bedroom and huge Family Room downstairs, there is plenty of space for your family! The lot is extra deep, no problem with space for a garden, RV parking, etc. Nestled at the southwest edge of the 'hood, there is easy access to all amenities surrounding it. Close by is Meadowlark Shopping Centre, and traffic arterials deliver you to the Valley Zoo, Whitemud Drive, WEM.....downtown even! The area boasts some of the best schools Edmonton offers, from K-12. Transit? No problem with the Valley Line LRT to be operating in 2026 in conjunction with regular transit. A great, well maintained property in an excellent location! Check it out!

Built in 1958

### Essential Information

MLS® #	E4441287
Price	\$419,900
Bedrooms	4
Bathrooms	2.00
Full Baths	2



Square Footage	1,064
Acres	0.00
Year Built	1958
Type	Single Family
Sub-Type	Detached Single Family
Style	Bungalow
Status	Active

### Community Information

Address	8745 155 Street
Area	Edmonton
Subdivision	Jasper Park
City	Edmonton
County	ALBERTA
Province	AB
Postal Code	T5R 1W1

### Amenities

Amenities	On Street Parking, Detectors Smoke, Low Flw/Dual Flush Toilet, No Animal Home, No Smoking Home, Television Connection, Vinyl Windows
Parking Spaces	4
Parking	Double Garage Detached, RV Parking

### Interior

Appliances	Dishwasher-Portable, Dryer, Freezer, Garage Control, Garage Opener, Hood Fan, Refrigerator, Stove-Electric, Vacuum System Attachments, Vacuum Systems, Washer, Window Coverings
Heating	Forced Air-1, Natural Gas
Stories	2
Has Basement	Yes
Basement	Full, Finished

### Exterior

Exterior	Wood, Vinyl
Exterior Features	Fenced, Low Maintenance Landscape, Paved Lane, Playground Nearby, Public Transportation, Schools, Shopping Nearby
Roof	Asphalt Shingles
Construction	Wood, Vinyl
Foundation	Concrete Perimeter

**School Information**

Elementary	J Gibbons, Notre Dame
Middle	Stratford
High	St. FX, Ross Sheppard

**Additional Information**

Date Listed	June 9th, 2025
Days on Market	7
Zoning	Zone 22

DATA IS DEEMED RELIABLE BUT IS NOT GUARANTEED ACCURATE BY THE REALTORS® ASSOCIATION OF EDMONTON. COPYRIGHT 2025 BY THE REALTORS® ASSOCIATION OF EDMONTON. ALL RIGHTS RESERVED.Trademarks are owned or controlled by the Canadian Real Estate Association (CREA) and identify real estate professionals who are members of CREA (REALTOR®, REALTORS®) and/or the quality of services they provide (MLS®, Multiple Listing Service®)

Listing information last updated on June 16th, 2025 at 7:17am MDT