

## **\$429,900 - 2813 18a Avenue, Edmonton**

---

MLS® #E4441210

**\$429,900**

4 Bedroom, 3.50 Bathroom, 1,274 sqft

Single Family on 0.00 Acres

Laurel, Edmonton, AB

**LOCATION, LOCATION, LOCATION !!!!**

Welcome to this beautiful 2-storey Landmark built half duplex in the prestigious community of LAUREL. Close to Shopping Stores, Hospital, Public transportation, White-mud freeway and Anthony Henday. this a . This beautiful half duplex offers a cozy living room, a perfect dining area and a beautiful kitchen with stainless steel appliances. The 2-piece washroom completes the main floor. Upstairs you will find 2 spacious bedrooms and a master bedroom with an ensuite bathroom and a his and her closet. A second full bathroom completes the upper floor. The Basement is FULLY FINISHED with a bedroom, a full bathroom and a bar area. An Amazing home for a perfect family. A very good opportunity for First Time Home Buyer's & Investors. Recent upgrades enhance this home's appeal: New Paint, New Vinyl Floor, New Tankless water tank, New Deck, New fridge, Water Softener, Water Filter etc.

Built in 2011

### **Essential Information**

MLS® #	E4441210
Price	\$429,900
Bedrooms	4
Bathrooms	3.50



Full Baths	3
Half Baths	1
Square Footage	1,274
Acres	0.00
Year Built	2011
Type	Single Family
Sub-Type	Half Duplex
Style	2 Storey
Status	Active

### Community Information

Address	2813 18a Avenue
Area	Edmonton
Subdivision	Laurel
City	Edmonton
County	ALBERTA
Province	AB
Postal Code	T6T 0N8

### Amenities

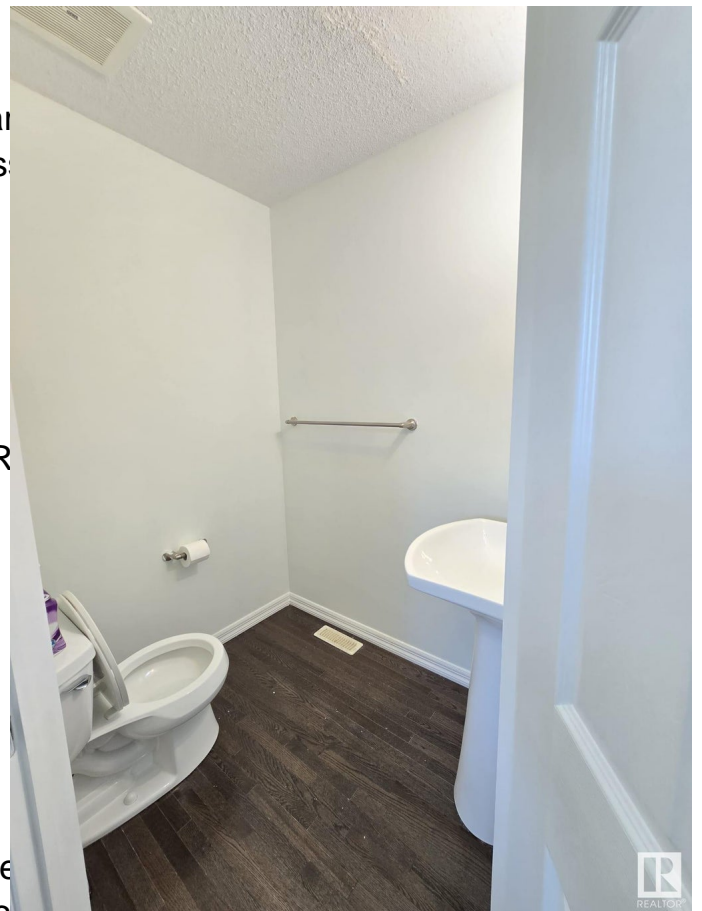
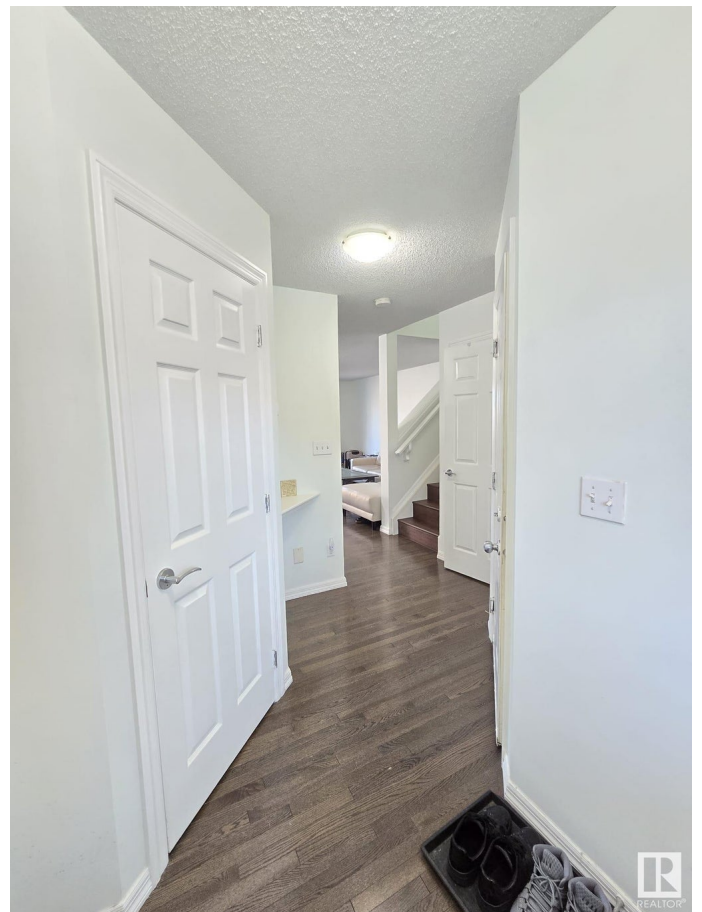
Amenities	On Street Parking, Bar, Car Wash, Dishwasher, Electric Range, Smoke, Hot Water Tankless Water Heater, Recreation Room/Centre
Parking	Single Garage Attached

### Interior

Interior Features	ensuite bathroom
Appliances	Dishwasher-Built-In, Dryer, Refrigerator
Heating	Forced Air-1, Natural Gas
Stories	3
Has Basement	Yes
Basement	Full, Finished

### Exterior

Exterior	Wood, Vinyl
Exterior Features	Fenced, Flat Site, Landscaped, Playground Nearby, Public Swimming Pool, Public Transportation, Schools, Shopping Nearby
Roof	Asphalt Shingles



Construction	Wood, Vinyl
Foundation	Concrete Perimeter

**Additional Information**

Date Listed	June 8th, 2025
Days on Market	57
Zoning	Zone 30

DATA IS DEEMED RELIABLE BUT IS NOT GUARANTEED ACCURATE BY THE REALTORS® ASSOCIATION OF EDMONTON. COPYRIGHT 2025 BY THE REALTORS® ASSOCIATION OF EDMONTON. ALL RIGHTS RESERVED.Trademarks are owned or controlled by the Canadian Real Estate Association (CREA) and identify real estate professionals who are members of CREA (REALTOR®, REALTORS®) and/or the quality of services they provide (MLS®, Multiple Listing Service®)

Listing information last updated on August 4th, 2025 at 12:32am MDT