

\$419,000 - 230036 Twp Rd 662, Rural Athabasca County

MLS® #E4441007

\$419,000

4 Bedroom, 2.00 Bathroom, 1,815 sqft

Rural on 2.90 Acres

None, Rural Athabasca County, AB

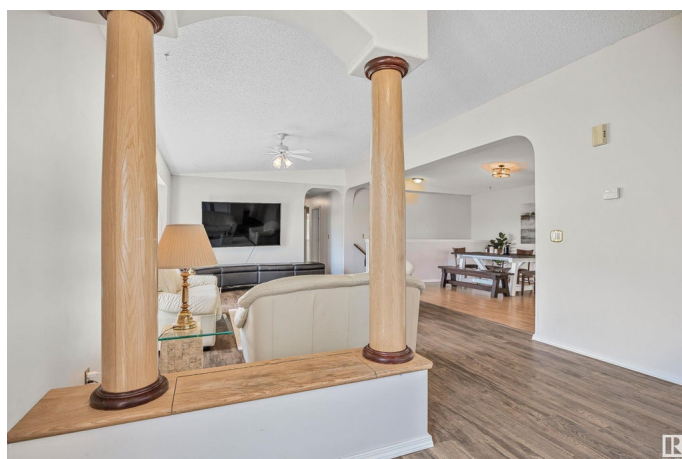
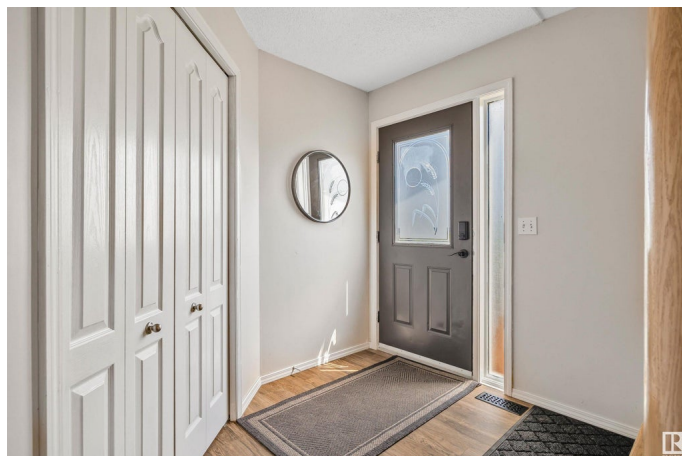
BEST OF BOTH WORLDS - Enjoy the peace & quiet of country life with Athabasca town amenities only 5 mins away. Beautiful, tranquil views & no close neighbours. Over 1800 sf on the main floor with 4 bedrooms & 2 full bathrooms. Bright, spacious, country kitchen with eating bar, pantry, skylights & loads of cabinets. The dining room is **MASSIVE** & opens on to the large **COVERED DECK** with room for dining, relaxing & working from home.

A spacious master bedroom, with ensuite & 2 walk-in closets, at one end of the house & 3 more bedrooms at the other end. A main floor laundry area & mud room are located at the back door. The basement has a large finished recreation room. A 5th bedroom, den & workshop or 6 bedroom require minor finishing to complete. **LARGE** Garage 30' x 36' for storage and all your toys. Trees border the west & north sides of the property for privacy and shelter from the weather.

Built in 2003

Essential Information

MLS® #	E4441007
Price	\$419,000
Bedrooms	4
Bathrooms	2.00
Full Baths	2



Square Footage	1,815
Acres	2.90
Year Built	2003
Type	Rural
Sub-Type	Detached Single Family
Style	Bungalow
Status	Active

Community Information

Address	230036 Twp Rd 662
Area	Rural Athabasca County
Subdivision	None
City	Rural Athabasca County
County	ALBERTA
Province	AB
Postal Code	T9S 2A9

Amenities

Features	Ceiling 9 ft., Deck, Fire Pit, Front Porch, Skylight, Vaulted Ceiling, Vinyl Windows
Parking Spaces	8

Interior

Interior Features	ensuite bathroom
Heating	Forced Air-1, Natural Gas
Stories	1
Has Basement	Yes
Basement	Full, Partially Finished

Exterior

Exterior	Wood
Exterior Features	Landscaped, Level Land, Low Maintenance Landscape, Private Setting, Schools, Shopping Nearby, See Remarks
Construction	Wood
Foundation	Concrete Perimeter

Additional Information

Date Listed	June 6th, 2025
Days on Market	12

Zoning

Zone 60

DATA IS DEEMED RELIABLE BUT IS NOT GUARANTEED ACCURATE BY THE REALTORS® ASSOCIATION OF EDMONTON. COPYRIGHT 2025 BY THE REALTORS® ASSOCIATION OF EDMONTON. ALL RIGHTS RESERVED. Trademarks are owned or controlled by the Canadian Real Estate Association (CREA) and identify real estate professionals who are members of CREA (REALTOR®, REALTORS®) and/or the quality of services they provide (MLS®, Multiple Listing Service®)

Listing information last updated on June 18th, 2025 at 11:17am MDT