

\$175,000 - 193 Roseland Village, Edmonton

MLS® #E4440960

\$175,000

3 Bedroom, 1.50 Bathroom, 1,163 sqft
Condo / Townhouse on 0.00 Acres

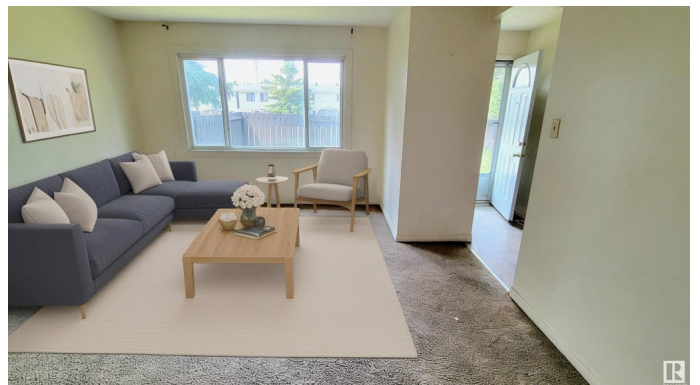
Northmount (Edmonton), Edmonton, AB

Looking for affordability & Low Condo fees? Roseland Village offers the perfect place to raise a family in a secure townhouse community. This end unit townhouse has 3 Generous Sized Bedrooms, 1.5 Baths a full Basement, energized parking stall and a small yard. Pets are welcome. Why not customize, upgrade & tinker while building equity in your own home rather than spending money on renting. Close to Schools, Shopping and Playgrounds, you also have easy access to Northgate, Londonderry Mall, Hwy 2 North and the Manning Freeway. Newer Hot water Tank. Some Pictures are Virtually Staged. With a bit of elbow grease make this a great home or rental!

Built in 1969

Essential Information

MLS® #	E4440960
Price	\$175,000
Bedrooms	3
Bathrooms	1.50
Full Baths	1
Half Baths	1
Square Footage	1,163
Acres	0.00
Year Built	1969



Type	Condo / Townhouse
Sub-Type	Townhouse
Style	2 Storey
Status	Active

Community Information

Address	193 Roseland Village
Area	Edmonton
Subdivision	Northmount (Edmonton)
City	Edmonton
County	ALBERTA
Province	AB
Postal Code	T5E 5R6

Amenities

Amenities	On Street Parking, No Animal Home, No Smoking Home
Parking	Stall

Interior

Appliances	Dryer, Refrigerator, Stove-Electric, Washer
Heating	Forced Air-1, Natural Gas
Stories	2
Has Basement	Yes
Basement	Full, Unfinished

Exterior

Exterior	Wood, Brick, Stucco
Exterior Features	Fenced, Playground Nearby, Public Transportation, Schools, Shopping Nearby
Roof	Asphalt Shingles
Construction	Wood, Brick, Stucco
Foundation	Concrete Perimeter

Additional Information

Date Listed	June 6th, 2025
Days on Market	10
Zoning	Zone 02
Condo Fee	\$296

DATA IS DEEMED RELIABLE BUT IS NOT GUARANTEED ACCURATE BY THE REALTORS® ASSOCIATION OF

EDMONTON. COPYRIGHT 2025 BY THE REALTORS® ASSOCIATION OF EDMONTON. ALL RIGHTS RESERVED.Trademarks are owned or controlled by the Canadian Real Estate Association (CREA) and identify real estate professionals who are members of CREA (REALTOR®, REALTORS®) and/or the quality of services they provide (MLS®, Multiple Listing Service®)

Listing information last updated on June 16th, 2025 at 8:47pm MDT