

\$109,900 - 202 9725 82 Avenue, Edmonton

MLS® #E4440204

\$109,900

1 Bedroom, 1.00 Bathroom, 583 sqft
Condo / Townhouse on 0.00 Acres

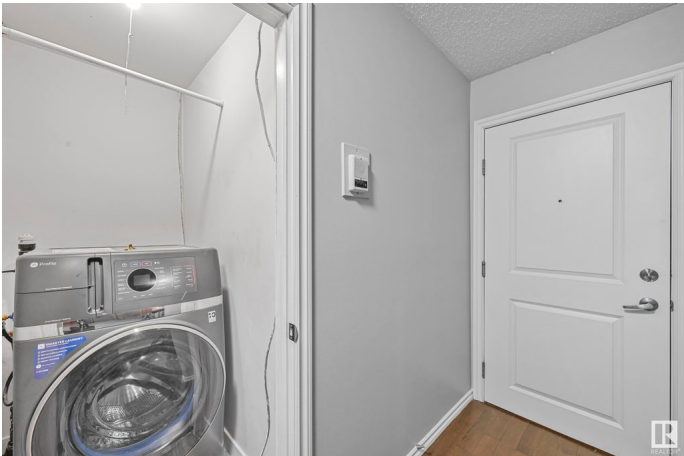
Ritchie, Edmonton, AB

Ideal for students, parents, or investors. This 1-bedroom condo is just minutes from the U of A and steps from Whyte Ave. The unit features hardwood flooring throughout the main areas, cozy carpet in the bedroom, and tile in the upgraded 4-piece bathroom. The kitchen is equipped with a black stove and dishwasher, stainless steel fridge, and a microwave hood fan. Perfect for easy everyday living. Enjoy the convenience of in-suite laundry and the bonus of condo fees that include heat and water. The living area is bright and welcoming, offering a great space to study or relax. Located in Old Strathcona, youâ€™re surrounded by parks, cafÃ©s, shops, and transit. Whether you're buying for a student or seeking a solid rental in one of Edmontonâ€™s most vibrant neighbourhoods, this unit delivers comfort, location, and value.

Built in 1969

Essential Information

MLS® #	E4440204
Price	\$109,900
Bedrooms	1
Bathrooms	1.00
Full Baths	1
Square Footage	583
Acres	0.00



Year Built	1969
Type	Condo / Townhouse
Sub-Type	Lowrise Apartment
Style	Single Level Apartment
Status	Active

Community Information

Address	202 9725 82 Avenue
Area	Edmonton
Subdivision	Ritchie
City	Edmonton
County	ALBERTA
Province	AB
Postal Code	T6E 1Y6

Amenities

Amenities	Off Street Parking, Closet Organizers, Detectors Smoke, Intercom, No Animal Home, No Smoking Home
Parking	Rear Drive Access, Stall

Interior

Appliances	Dishwasher-Built-In, Euro Washer/Dryer Combo, Microwave Hood Fan, Refrigerator, Stove-Electric
Heating	Baseboard, Natural Gas
# of Stories	3
Stories	1
Has Basement	Yes
Basement	None, No Basement

Exterior

Exterior	Wood, Vinyl
Exterior Features	Back Lane, Flat Site, Landscaped, Paved Lane, View City, See Remarks
Roof	EPDM Membrane
Construction	Wood, Vinyl
Foundation	Concrete Perimeter

Additional Information

Date Listed	June 4th, 2025
Days on Market	13

Zoning	Zone 17
Condo Fee	\$538

DATA IS DEEMED RELIABLE BUT IS NOT GUARANTEED ACCURATE BY THE REALTORS® ASSOCIATION OF EDMONTON. COPYRIGHT 2025 BY THE REALTORS® ASSOCIATION OF EDMONTON. ALL RIGHTS RESERVED. Trademarks are owned or controlled by the Canadian Real Estate Association (CREA) and identify real estate professionals who are members of CREA (REALTOR®, REALTORS®) and/or the quality of services they provide (MLS®, Multiple Listing Service®)

Listing information last updated on June 16th, 2025 at 10:17pm MDT