

## \$204,999 - 211 245 Edwards Drive, Edmonton

MLS® #E4440143

**\$204,999**

2 Bedroom, 2.00 Bathroom, 832 sqft

Condo / Townhouse on 0.00 Acres

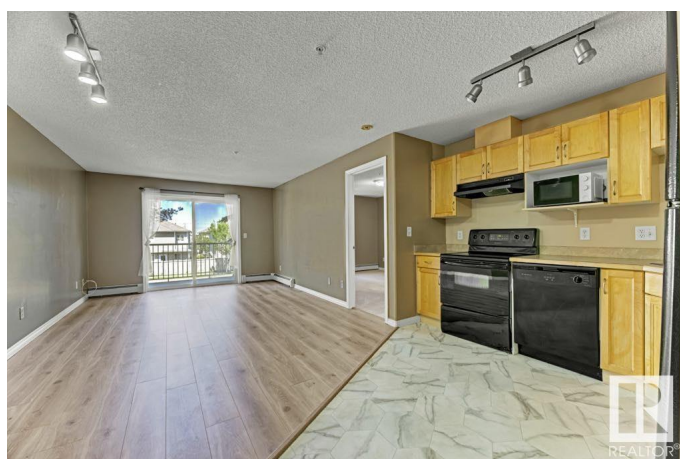
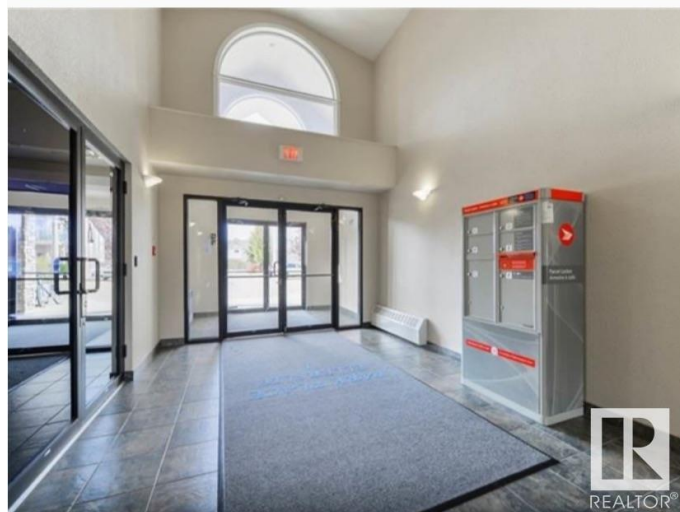
Ellerslie, Edmonton, AB

Visit the Listing Brokerage (and/or listing REALTOR®) website to obtain additional information. Wheelchair accessible with elevator. -Clean condo and ready to move in. -New flooring in entire condo -Great investment property -Bright Second floor 2 bedrooms and 2 full bathrooms with huge balcony and brand new carpet and flooring. -Condo Fee - includes heating, water, sewer, garbage and waste disposal, landscaping, reserve fund, common area insurance -Master bedroom has walk in closet. -In-suite laundry. Plenty of storage. -Well maintained building, Surrounded by walking trail. -24 hours security camera -Gym and fitness room -1 energized parking stall -plenty of free parking on Edwards drive and Easton drive -Easy access to Anthony Henday, Nisku, airport. Bus stop is steps away.

Built in 2004

### Essential Information

MLS® #	E4440143
Price	\$204,999
Bedrooms	2
Bathrooms	2.00
Full Baths	2
Square Footage	832
Acres	0.00



Year Built	2004
Type	Condo / Townhouse
Sub-Type	Lowrise Apartment
Style	Single Level Apartment
Status	Active

### Community Information

Address	211 245 Edwards Drive
Area	Edmonton
Subdivision	Ellerslie
City	Edmonton
County	ALBERTA
Province	AB
Postal Code	T6X 1J9

### Amenities

Amenities	Off Street Parking, On Street Parking, Parking-Plug-Ins
Parking Spaces	1
Parking	Stall

### Interior

Interior Features	ensuite bathroom
Appliances	See Remarks
Heating	Baseboard, See Remarks
# of Stories	4
Stories	1
Has Basement	Yes
Basement	None, No Basement

### Exterior

Exterior	Other, Vinyl
Exterior Features	Public Transportation, Shopping Nearby, See Remarks
Roof	Unknown
Construction	Other, Vinyl
Foundation	Concrete Perimeter

### Additional Information

Date Listed	June 2nd, 2025
Days on Market	14

Zoning	Zone 53
Condo Fee	\$395

DATA IS DEEMED RELIABLE BUT IS NOT GUARANTEED ACCURATE BY THE REALTORS® ASSOCIATION OF EDMONTON. COPYRIGHT 2025 BY THE REALTORS® ASSOCIATION OF EDMONTON. ALL RIGHTS RESERVED. Trademarks are owned or controlled by the Canadian Real Estate Association (CREA) and identify real estate professionals who are members of CREA (REALTOR®, REALTORS®) and/or the quality of services they provide (MLS®, Multiple Listing Service®)

Listing information last updated on June 16th, 2025 at 8:47pm MDT