

# **\$849,900 - 38 22430 Twp Rd 520, Rural Strathcona County**

MLS® #E4439301

**\$849,900**

3 Bedroom, 3.00 Bathroom, 2,008 sqft

Rural on 3.00 Acres

None, Rural Strathcona County, AB

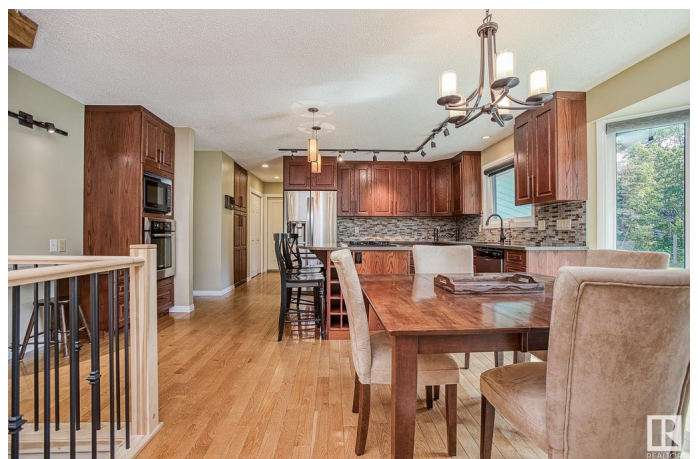
CUSTOM DESIGNED WALKOUT BUNGALOW on 3 Acres of sought after private & quiet, treed & cleared land, only 9 minutes from Sherwood Park. MAIN FLOOR â€œ Open Concept with over 2000 sqft + additional heated â€œ3 Season Roomâ€œ. From the Kitchen with breakfast nook to the Living & Family Room (both with Fireplaces) youâ€™ll be wowed. Primary Bedroom with walk in closet & Huge 5 pce EN-SUITE. Main Floor Laundry. DOWNSTAIRS - 1743sqft, 2 Bedrooms with large windows, partially completed 4 pce Bathroom, Massive Family Room with Fireplace and patio doors. Spacious Art Studio / Workshop with adjoining Den. OVERSIZED INSULATED GARAGE (29ft x 23â€™9â€œ), with gas hookup & extra power. Uses Filtered Well Water & option to switch to Cistern setup, HWT (2025), 2 High Efficient Furnaces (2022 & 2011), roof, windows, kitchen, hardwood flooring, and much more were maintained/updated. Land has space for a shop or horses. Estate Sale, As-Is, Where-Is. DON'T MISS OUT!

Built in 1978

## **Essential Information**

MLS® #

E4439301



Price	\$849,900
Bedrooms	3
Bathrooms	3.00
Full Baths	2
Half Baths	2
Square Footage	2,008
Acres	3.00
Year Built	1978
Type	Rural
Sub-Type	Detached Single Family
Style	Hillside Bungalow
Status	Active

### Community Information

Address	38 22430 Twp Rd 520
Area	Rural Strathcona County
Subdivision	None
City	Rural Strathcona County
County	ALBERTA
Province	AB
Postal Code	T8C 1E6

### Amenities

Features	Carbon Monoxide Detectors, Deck, Detectors Smoke, Fire Pit, Hot Water Natural Gas, Vinyl Windows, Walkout Basement, See Remarks, Natural Gas BBQ Hookup
Parking Spaces	10

### Interior

Interior Features	ensuite bathroom
Heating	Forced Air-2, Natural Gas
Fireplace	Yes
Stories	2
Has Basement	Yes
Basement	Full, Finished

### Exterior

Exterior	Wood
Exterior Features	Airport Nearby, Golf Nearby, Hillside, Landscaped, No Through Road,

Private Setting, Schools, Stream/Pond, Treed Lot, Vegetable Garden,  
See Remarks

Construction Wood

Foundation Concrete Perimeter

### **Additional Information**

Date Listed May 29th, 2025

Days on Market 18

Zoning Zone 80

DATA IS DEEMED RELIABLE BUT IS NOT GUARANTEED ACCURATE BY THE REALTORS® ASSOCIATION OF EDMONTON. COPYRIGHT 2025 BY THE REALTORS® ASSOCIATION OF EDMONTON. ALL RIGHTS RESERVED. Trademarks are owned or controlled by the Canadian Real Estate Association (CREA) and identify real estate professionals who are members of CREA (REALTOR®, REALTORS®) and/or the quality of services they provide (MLS®, Multiple Listing Service®)

Listing information last updated on June 16th, 2025 at 2:32pm MDT