

\$242,000 - 402 10528 77 Avenue, Edmonton

MLS® #E4439122

\$242,000

2 Bedroom, 2.00 Bathroom, 962 sqft

Condo / Townhouse on 0.00 Acres

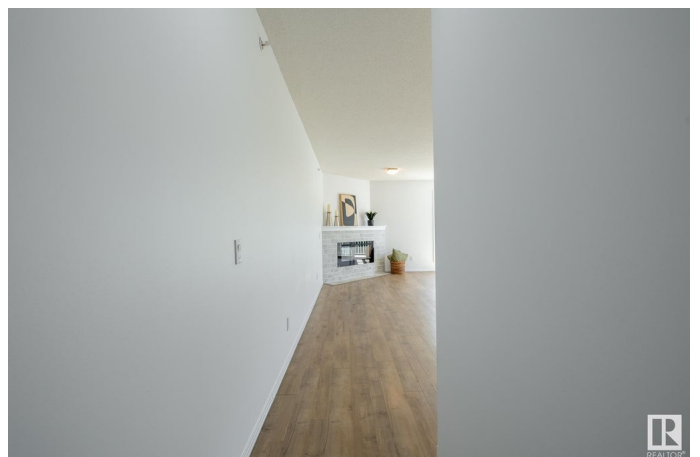
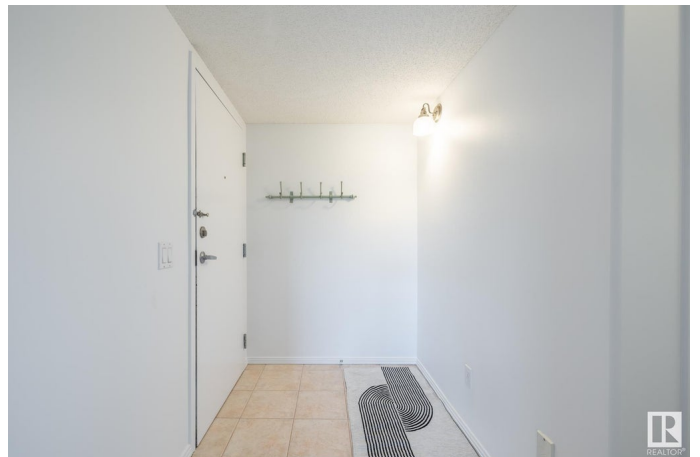
Queen Alexandra, Edmonton, AB

Top-Floor Corner Unit with Park Views + Tons of Natural Light! Bright and updated 2 bed, 2 bath corner unit with southwest exposure and a wraparound balconyâ€”perfect for morning coffee or sunset hangs. Located across from a park and close to Whyte Ave, U of A, hospital, and transit. The open layout feels spacious with fresh paint, updated white cabinets, and laminate flooring throughout (tile in kitchen/baths). Large windows let in great natural light, and thereâ€™s a cozy electric fireplace in the living area. The kitchen has a window over the sink, and thereâ€™s in-suite laundry for added convenience. The primary bedroom has 2 closets and a full ensuite. Second bathroom is great for guests or roommates. Includes: A/C, all appliances, covered parking, and extra storage in a quiet 18+ building. Perfect for young professionals or students wanting a clean, low-maintenance space in a prime location! 5 min walk to Whyte Ave.

Built in 2000

Essential Information

MLS® #	E4439122
Price	\$242,000
Bedrooms	2
Bathrooms	2.00



Full Baths	2
Square Footage	962
Acres	0.00
Year Built	2000
Type	Condo / Townhouse
Sub-Type	Lowrise Apartment
Style	Single Level Apartment
Status	Active

Community Information

Address	402 10528 77 Avenue
Area	Edmonton
Subdivision	Queen Alexandra
City	Edmonton
County	ALBERTA
Province	AB
Postal Code	T6E 1N1

Amenities

Amenities	Air Conditioner, Deck, Intercom, Security Door, Storage-Locker Room
Parking	Stall

Interior

Interior Features	ensuite bathroom
Appliances	Air Conditioning-Central, Dishwasher-Built-In, Garburator, Microwave Hood Fan, Refrigerator, Stacked Washer/Dryer, Stove-Electric
Heating	Forced Air-1, Natural Gas
# of Stories	4
Stories	1
Has Basement	Yes
Basement	None, No Basement

Exterior

Exterior	Wood, Vinyl
Exterior Features	Playground Nearby, Public Transportation, Schools, Shopping Nearby
Roof	Asphalt Shingles
Construction	Wood, Vinyl
Foundation	Concrete Perimeter

Additional Information

Date Listed	May 29th, 2025
Days on Market	19
Zoning	Zone 15
Condo Fee	\$563

DATA IS DEEMED RELIABLE BUT IS NOT GUARANTEED ACCURATE BY THE REALTORS® ASSOCIATION OF EDMONTON. COPYRIGHT 2025 BY THE REALTORS® ASSOCIATION OF EDMONTON. ALL RIGHTS RESERVED. Trademarks are owned or controlled by the Canadian Real Estate Association (CREA) and identify real estate professionals who are members of CREA (REALTOR®, REALTORS®) and/or the quality of services they provide (MLS®, Multiple Listing Service®)

Listing information last updated on June 17th, 2025 at 7:17pm MDT