

## \$170,000 - 8 Woodcroft Place, Warburg

MLS® #E4438647

**\$170,000**

3 Bedroom, 1.00 Bathroom, 1,076 sqft

Single Family on 0.00 Acres

Warburg, Warburg, AB

Well cared for 3 bedroom modular on your own lot. Open concept kitchen with plenty of cabinets, vaulted ceiling, living room with bay window. Spacious entryway. Lot size 65x120' with driveway on side. Storage shed included. Maturely treed South facing backyard.

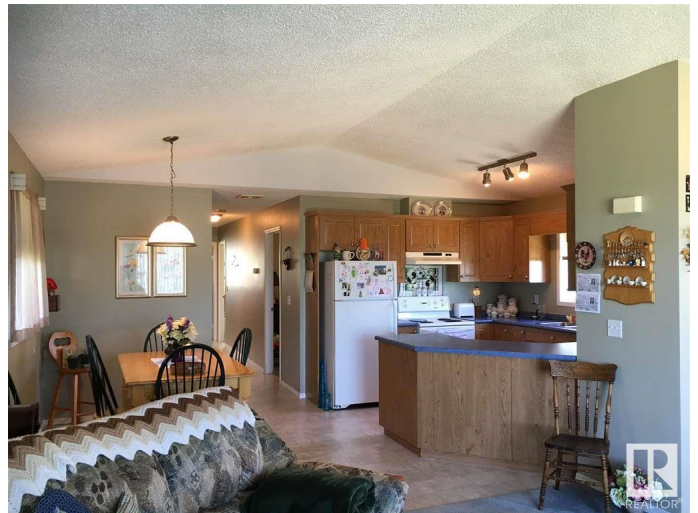
Built in 2000

### Essential Information

MLS® #	E4438647
Price	\$170,000
Bedrooms	3
Bathrooms	1.00
Full Baths	1
Square Footage	1,076
Acres	0.00
Year Built	2000
Type	Single Family
Sub-Type	Detached Single Family
Style	Bungalow
Status	Active

### Community Information

Address	8 Woodcroft Place
Area	Warburg
Subdivision	Warburg
City	Warburg



County	ALBERTA
Province	AB
Postal Code	T0C 2T0

### **Amenities**

Amenities	Vinyl Windows
Parking	Front Drive Access

### **Interior**

Appliances	Dishwasher-Built-In, Dryer, Hood Fan, Oven-Microwave, Refrigerator, Storage Shed, Stove-Electric, Washer
Heating	Forced Air-1, Natural Gas
Stories	1
Has Basement	Yes
Basement	None, No Basement

### **Exterior**

Exterior	Modular, Vinyl
Exterior Features	Low Maintenance Landscape
Roof	Asphalt Shingles
Construction	Modular, Vinyl
Foundation	Piling

### **Additional Information**

Date Listed	May 26th, 2025
Days on Market	19
Zoning	Zone 90

DATA IS DEEMED RELIABLE BUT IS NOT GUARANTEED ACCURATE BY THE REALTORS® ASSOCIATION OF EDMONTON. COPYRIGHT 2025 BY THE REALTORS® ASSOCIATION OF EDMONTON. ALL RIGHTS RESERVED. Trademarks are owned or controlled by the Canadian Real Estate Association (CREA) and identify real estate professionals who are members of CREA (REALTOR®, REALTORS®) and/or the quality of services they provide (MLS®, Multiple Listing Service®)

Listing information last updated on June 14th, 2025 at 1:47am MDT