

# \$809,000 - 6423 29 Street, Rural Leduc County

MLS® #E4438457

**\$809,000**

5 Bedroom, 4.00 Bathroom, 2,500 sqft  
Rural on 0.19 Acres

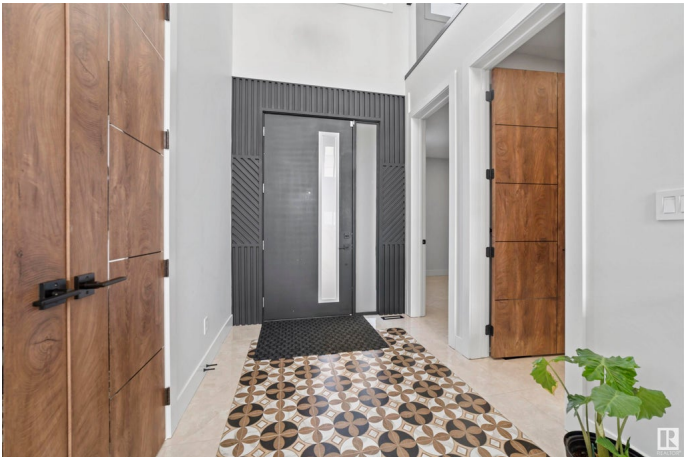
Churchill Meadow, Rural Leduc County, AB

This exceptional 32-pocket walkout pie lot sits on over 8,150 sq. ft of land and backs onto a beautiful green space. Featuring a custom-built approx. 2,500 sq. ft home with 5 bed, out of which 4 are Masters each with ensuite bathrooms, this property offers spacious and thoughtful design throughout. Highlights include a spice kitchen, quartz countertops, 9â€10-20 ft ceilings, open-to-below layout, feature walls, and an oversized double garage with an 18x8 ft garage door. Enjoy a larger backyard perfect for entertaining or relaxing. Conveniently located just 10 minutes from Costco, Walmart, the airport, bilingual schools, and everyday amenities. Please note: Photos shown are of a similar home by the same builder; finishes and layout may vary. Basement can be added for additional cost.

Built in 2025

## Essential Information

MLS® #	E4438457
Price	\$809,000
Bedrooms	5
Bathrooms	4.00
Full Baths	4
Square Footage	2,500
Acres	0.19



Year Built	2025
Type	Rural
Sub-Type	Detached Single Family
Style	2 Storey
Status	Active

### Community Information

Address	6423 29 Street
Area	Rural Leduc County
Subdivision	Churchill Meadow
City	Rural Leduc County
County	ALBERTA
Province	AB
Postal Code	T4X 3A7

### Amenities

Features	On Street Parking, Carbon Monoxide Detectors, Ceiling 10 ft., Ceiling 9 ft., Closet Organizers, Deck, Detectors Smoke, Insulation-Upgraded, No Animal Home, No Smoking Home, Parking-Plug-Ins, Smart/Program. Thermostat, Wet Bar, See Remarks, Vacuum System-Roughed-In, HRV System, Natural Gas BBQ Hookup, 9 ft. Basement Ceiling
----------	--

### Interior

Interior Features	ensuite bathroom
Heating	Forced Air-1, Natural Gas
Fireplace	Yes
Stories	2
Has Basement	Yes
Basement	Full, Unfinished

### Exterior

Exterior	Wood
Exterior Features	Airport Nearby, Backs Onto Park/Trees, Golf Nearby, No Back Lane, Schools, Shopping Nearby, Street Lighting, Partially Fenced
Construction	Wood
Foundation	Concrete Perimeter

### Additional Information

Date Listed	May 22nd, 2025
Days on Market	73

## Zoning

## Zone 80

DATA IS DEEMED RELIABLE BUT IS NOT GUARANTEED ACCURATE BY THE REALTORS® ASSOCIATION OF EDMONTON. COPYRIGHT 2025 BY THE REALTORS® ASSOCIATION OF EDMONTON. ALL RIGHTS RESERVED. Trademarks are owned or controlled by the Canadian Real Estate Association (CREA) and identify real estate professionals who are members of CREA (REALTOR®, REALTORS®) and/or the quality of services they provide (MLS®, Multiple Listing Service®)

Listing information last updated on August 3rd, 2025 at 8:17am MDT