

\$484,450 - 1990 Glenmore Avenue, Sherwood Park

MLS® #E4438395

\$484,450

3 Bedroom, 2.50 Bathroom, 1,803 sqft

Single Family on 0.00 Acres

Broadmoor, Sherwood Park, AB

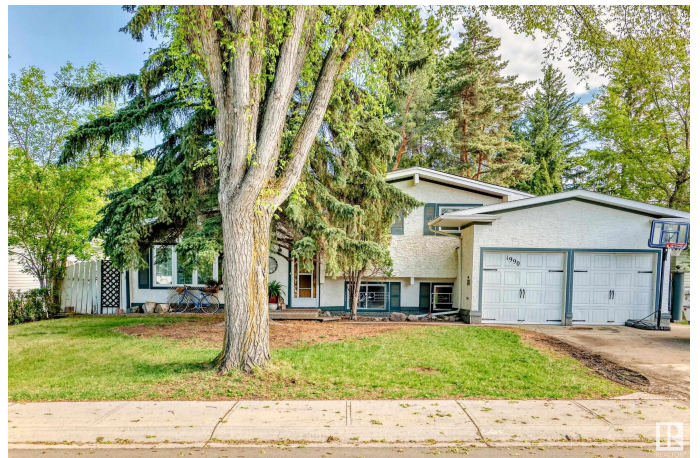
Serviced, livable, and priced to reflect the work needed—this is your chance to breathe new life into a one-of-a-kind home in Sherwood Park’s best-kept secret. This property is ideal for contractors, renovators, or families with vision and a passion for transformation. Set on a rare 905 m² +/- lot backing onto peaceful forest, this home offers over 1,800 sqft of living space in one of Sherwood Park’s most established and desirable neighbourhoods. With cozy living rooms, a fireplace, and a bright, sunny atrium, there’s already plenty to love. The true potential lies in what this home could become. The 550 sq ft addition is not for the faint of heart—it’s a major renovation project, for those ready to take it on, it could be transformed into a stunning kitchen, a sun-drenched family room, AND a custom indoor-outdoor living space that takes full advantage of the private backyard setting. The lower level is ready to be developed into an additional bedroom, and a oversized bathroom complete with laundry and storage.

Built in 1964

Essential Information

MLS® # E4438395

Price \$484,450



Bedrooms	3
Bathrooms	2.50
Full Baths	2
Half Baths	1
Square Footage	1,803
Acres	0.00
Year Built	1964
Type	Single Family
Sub-Type	Detached Single Family
Style	3 Level Split
Status	Active

Community Information

Address	1990 Glenmore Avenue
Area	Sherwood Park
Subdivision	Broadmoor
City	Sherwood Park
County	ALBERTA
Province	AB
Postal Code	T8A 2G5

Amenities

Amenities	Off Street Parking, On Street Parking, Crawl Space, Hot Water Natural Gas, No Smoking Home, Vaulted Ceiling
Parking	Single Garage Attached

Interior

Interior Features	ensuite bathroom
Appliances	Dishwasher-Built-In, Dryer, Garage Control, Microwave Hood Fan, Oven-Built-In, Refrigerator, Storage Shed, Stove-Countertop Electric, Washer, Window Coverings
Heating	Forced Air-1, Natural Gas
Fireplace	Yes
Fireplaces	Corner
Stories	2
Has Basement	Yes
Basement	None, No Basement

Exterior

Exterior	Wood, Stucco
Exterior Features	Backs Onto Park/Trees, Fenced, Flat Site, Golf Nearby, Low Maintenance Landscape, No Back Lane, Public Transportation, Schools, Shopping Nearby, Vegetable Garden
Roof	Asphalt Shingles
Construction	Wood, Stucco
Foundation	Concrete Perimeter

Additional Information

Date Listed May 24th, 2025

Days on Market 20

Zoning Zone 25

DATA IS DEEMED RELIABLE BUT IS NOT GUARANTEED ACCURATE BY THE REALTORS® ASSOCIATION OF EDMONTON. COPYRIGHT 2025 BY THE REALTORS® ASSOCIATION OF EDMONTON. ALL RIGHTS RESERVED. Trademarks are owned or controlled by the Canadian Real Estate Association (CREA) and identify real estate professionals who are members of CREA (REALTOR®, REALTORS®) and/or the quality of services they provide (MLS®, Multiple Listing Service®)

Listing information last updated on June 13th, 2025 at 5:17pm MDT