

\$195,000 - 89 604 62 Street, Edmonton

MLS® #E4438131

\$195,000

2 Bedroom, 1.00 Bathroom, 792 sqft

Condo / Townhouse on 0.00 Acres

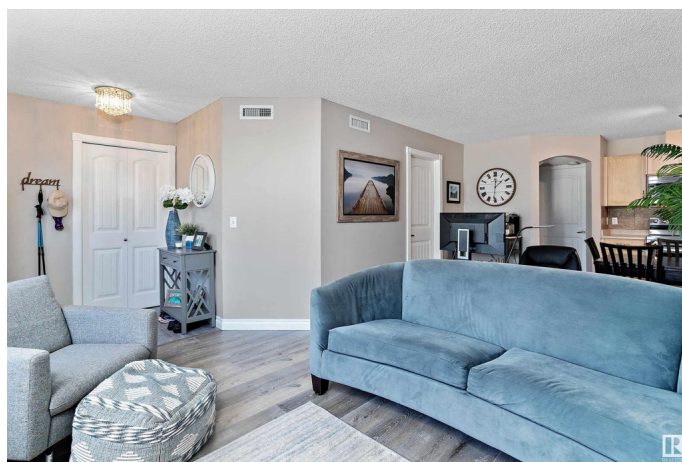
Charlesworth, Edmonton, AB

Discover this meticulously maintained 2-bedroom, 1-bath end-unit carriage home in Ellerslie Heights. Situated in a quiet corner with lush green space, it's a short walk through a scenic park to Ellerslie Campus School (Kâ€9) . The 791 sq. ft. interior boasts a bright, open layout with large windows, rich maple cabinetry, upgraded S/S appliances, and a tile backsplash. Enjoy the convenience of in-suite laundry, a heat pump for year-round comfort, and ample storage. Step outside to a spacious patio, perfect for morning coffee or evening BBQs. Recent upgrades include newer flooring and a Rinnai on-demand hot water system. Located minutes from Anthony Henday Drive, schools, playgrounds, and shopping, this home offers a perfect blend of tranquility and accessibility. Well-managed complex, with convenient parking, no stairs, and quiet neighbours, make this a lovely place to call home!

Built in 2008

Essential Information

MLS® #	E4438131
Price	\$195,000
Bedrooms	2
Bathrooms	1.00
Full Baths	1



Square Footage	792
Acres	0.00
Year Built	2008
Type	Condo / Townhouse
Sub-Type	Carriage
Style	Bungalow
Status	Active

Community Information

Address	89 604 62 Street
Area	Edmonton
Subdivision	Charlesworth
City	Edmonton
County	ALBERTA
Province	AB
Postal Code	T6X 0K4

Amenities

Amenities	Parking-Extra, Parking-Visitor
Parking	2 Outdoor Stalls

Interior

Appliances	Dishwasher-Built-In, Dryer, Microwave Hood Fan, Refrigerator, Stove-Electric, Washer, Window Coverings
Heating	Heat Pump, Natural Gas
Stories	1
Has Basement	Yes
Basement	None, No Basement

Exterior

Exterior	Wood, Vinyl
Exterior Features	Golf Nearby, Landscaped, Playground Nearby, Schools, Shopping Nearby
Roof	Asphalt Shingles
Construction	Wood, Vinyl
Foundation	Concrete Perimeter

School Information

Elementary	Ellerslie/Corpus Christi
------------	--------------------------

Middle	Ellerslie/Corpus Christ
High	Francis Whiskeyjack

Additional Information

Date Listed	May 23rd, 2025
Days on Market	27
Zoning	Zone 53
Condo Fee	\$340

DATA IS DEEMED RELIABLE BUT IS NOT GUARANTEED ACCURATE BY THE REALTORS® ASSOCIATION OF EDMONTON. COPYRIGHT 2025 BY THE REALTORS® ASSOCIATION OF EDMONTON. ALL RIGHTS RESERVED. Trademarks are owned or controlled by the Canadian Real Estate Association (CREA) and identify real estate professionals who are members of CREA (REALTOR®, REALTORS®) and/or the quality of services they provide (MLS®, Multiple Listing Service®)

Listing information last updated on June 19th, 2025 at 9:18am MDT