

\$179,500 - 1501 9835 113 Street, Edmonton

MLS® #E4437942

\$179,500

2 Bedroom, 1.00 Bathroom, 1,067 sqft

Condo / Townhouse on 0.00 Acres

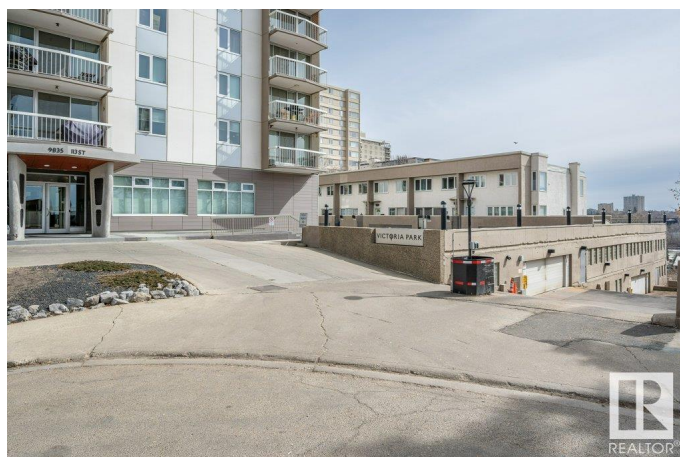
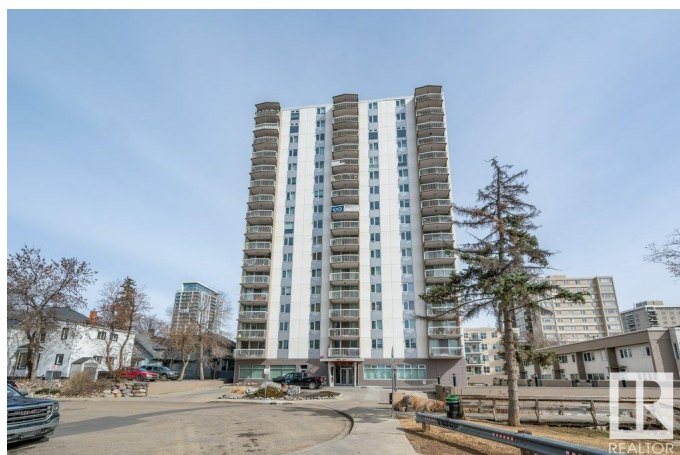
W&#x2013;hkw–nt–win, Edmonton, AB

Welcome to your riverside retreat! This 15th-floor 2 bedroom, 1 bath condo offers peaceful living with stunning river valley views. Featuring a spacious living/dining area with east and south exposure, a kitchen ready for your updates, and two generously sized bedrooms. Concrete construction ensures a quiet atmosphere, and same-floor laundry adds everyday convenience. Enjoy the on-site gym with sauna and change rooms, host events in the top-floor meeting room with panoramic views, or unwind on the rooftop terrace. The large east-facing balcony and charming courtyard invite outdoor relaxation. Condo fees include all utilities. Steps from shopping, schools, and scenic river trails.

Built in 1969

Essential Information

MLS® #	E4437942
Price	\$179,500
Bedrooms	2
Bathrooms	1.00
Full Baths	1
Square Footage	1,067
Acres	0.00
Year Built	1969
Type	Condo / Townhouse



Sub-Type	Apartment High Rise
Style	Single Level Apartment
Status	Active

Community Information

Address	1501 9835 113 Street
Area	Edmonton
Subdivision	WÃ©hkwÃ©ntÃ©win
City	Edmonton
County	ALBERTA
Province	AB
Postal Code	T5K 1N4

Amenities

Amenities	On Street Parking, Exercise Room, Parking-Visitor, Party Room, Secured Parking, Security Door, Storage-In-Suite, Rooftop Deck/Patio
Parking Spaces	1
Parking	Heated, Stall, Underground

Interior

Appliances	Dishwasher-Built-In, Refrigerator, Stove-Electric
Heating	Hot Water, Natural Gas
# of Stories	18
Stories	1
Has Basement	Yes
Basement	None, No Basement

Exterior

Exterior	Concrete, Composition, Stucco
Exterior Features	Public Transportation, Shopping Nearby, View City
Roof	Concrete Tiles
Construction	Concrete, Composition, Stucco
Foundation	Concrete Perimeter

Additional Information

Date Listed	May 22nd, 2025
Days on Market	25
Zoning	Zone 12
Condo Fee	\$901

DATA IS DEEMED RELIABLE BUT IS NOT GUARANTEED ACCURATE BY THE REALTORS® ASSOCIATION OF EDMONTON. COPYRIGHT 2025 BY THE REALTORS® ASSOCIATION OF EDMONTON. ALL RIGHTS RESERVED.Trademarks are owned or controlled by the Canadian Real Estate Association (CREA) and identify real estate professionals who are members of CREA (REALTOR®, REALTORS®) and/or the quality of services they provide (MLS®, Multiple Listing Service®)

Listing information last updated on June 16th, 2025 at 2:32pm MDT