

# **\$174,800 - 1106 10125 109 Street, Edmonton**

MLS® #E4437835

**\$174,800**

2 Bedroom, 1.50 Bathroom, 880 sqft

Condo / Townhouse on 0.00 Acres

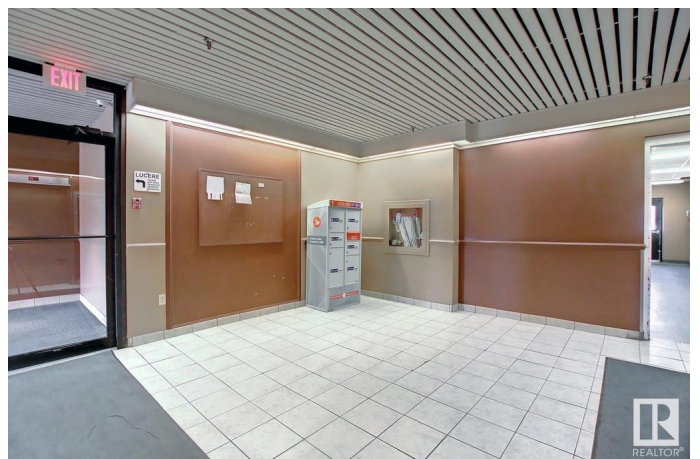
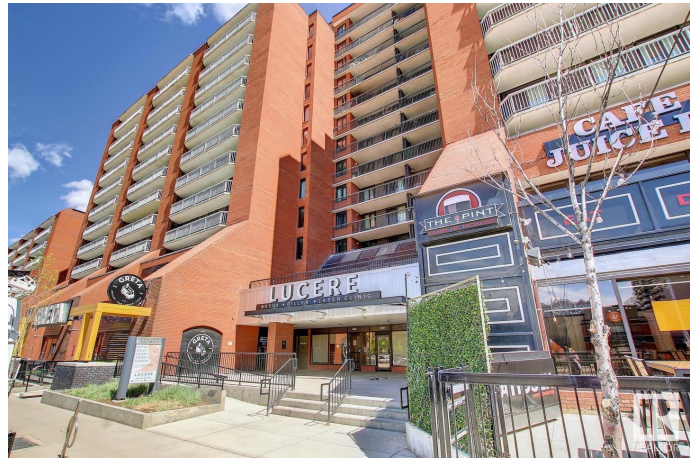
Downtown (Edmonton), Edmonton, AB

A CONDO WITH A VIEW! Watch the sunsets and the city view from this upgraded 2 bedroom 2 bathroom 894 sqft concrete high rise in the heart of Edmonton's Capital Centre complex. Fabulous floorplan, nicely appointed with modern colors, newer laminate and carpets plus views in all rooms. Good sized kitchen and dining area that include upgraded stainless appliances, loads of cabinets and countertops. Master bedroom has walk through him/her closets and half bath. Good sized second bedroom, full bath and insuite laundry. Massive balcony to enjoy sunset views off living room w/ convenience of extra storage room. Underground parking. Amazing location steps from Save-On-Foods, Grant Mac, LRT, shopping and river valley trails. Perfect lifestyle condo for working professionals, semi retired or students. MUST SEE!

Built in 1981

## **Essential Information**

MLS® #	E4437835
Price	\$174,800
Bedrooms	2
Bathrooms	1.50
Full Baths	1
Half Baths	1



Square Footage	880
Acres	0.00
Year Built	1981
Type	Condo / Townhouse
Sub-Type	Apartment High Rise
Style	Single Level Apartment
Status	Active

### Community Information

Address	1106 10125 109 Street
Area	Edmonton
Subdivision	Downtown (Edmonton)
City	Edmonton
County	ALBERTA
Province	AB
Postal Code	T5J 3P1

### Amenities

Amenities	Deck, Exterior Walls- 2"x6", No Smoking Home
Parking	Underground

### Interior

Interior Features	ensuite bathroom
Appliances	Dishwasher-Built-In, Dryer, Garage Opener, Refrigerator, Stove-Electric, Washer, Window Coverings
Heating	Baseboard, Natural Gas
# of Stories	16
Stories	1
Has Basement	Yes
Basement	None, No Basement

### Exterior

Exterior	Concrete, Brick
Exterior Features	Golf Nearby, Lake Access Property, Landscaped, Playground Nearby, Public Transportation, River Valley View, Ski Hill Nearby, View City
Roof	Tar & Gravel
Construction	Concrete, Brick
Foundation	Concrete Perimeter

### Additional Information

Date Listed	May 22nd, 2025
Days on Market	75
Zoning	Zone 12
Condo Fee	\$729

DATA IS DEEMED RELIABLE BUT IS NOT GUARANTEED ACCURATE BY THE REALTORS® ASSOCIATION OF EDMONTON. COPYRIGHT 2025 BY THE REALTORS® ASSOCIATION OF EDMONTON. ALL RIGHTS RESERVED. Trademarks are owned or controlled by the Canadian Real Estate Association (CREA) and identify real estate professionals who are members of CREA (REALTOR®, REALTORS®) and/or the quality of services they provide (MLS®, Multiple Listing Service®)

Listing information last updated on August 5th, 2025 at 4:47am MDT