

\$759,900 - 19119 22 Avenue, Edmonton

MLS® #E4437750

\$759,900

6 Bedroom, 5.00 Bathroom, 2,370 sqft

Single Family on 0.00 Acres

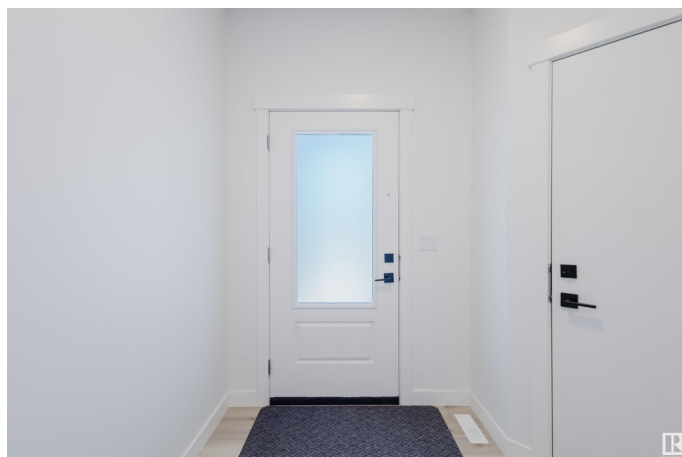
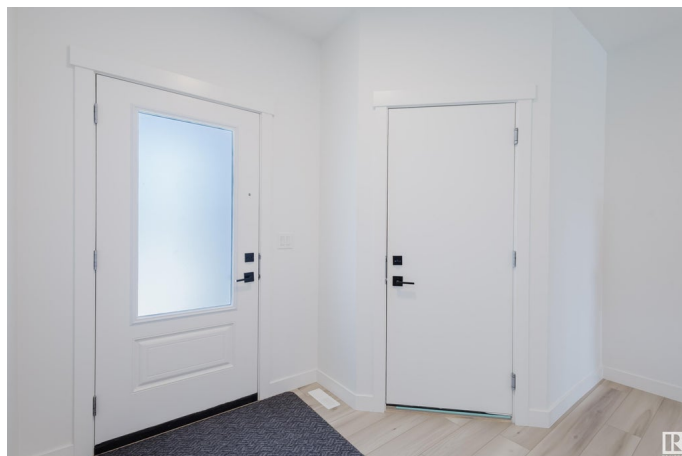
River's Edge, Edmonton, AB

Backing onto POND! SOUTH facing yard and WALKOUT LEGAL BASEMENT! This stylish 6-bedroom, 5-bathroom home offers modern comfort with a MAIN FLOOR BEDROOM and full 3-piece bath with a standing shower. The upper floor features FOUR BEDROOMS, and TWO bedrooms feature private ENSUITES for added convenience. The home includes a SPICE KITCHEN with both electric stove and gas stove, brand new S/S upgraded appliances and a walk-in pantry. Durable vinyl plank flooring spans both the main level and SECOND FLOOR, while large windows fill the space with natural light. Fully finished walkout legal basement includes a CHEF KITCHEN, spacious living room and one bedroom with a WALK-IN CLOSET. The home was completed in February 2025 and is still under ONE-YEAR WARRANTY for materials and labour. It also features a WATER PURIFIER system and a WATER SOFTENER. Better than new!

Built in 2024

Essential Information

MLS® #	E4437750
Price	\$759,900
Bedrooms	6
Bathrooms	5.00
Full Baths	5



Square Footage	2,370
Acres	0.00
Year Built	2024
Type	Single Family
Sub-Type	Detached Single Family
Style	2 Storey
Status	Active

Community Information

Address	19119 22 Avenue
Area	Edmonton
Subdivision	River's Edge
City	Edmonton
County	ALBERTA
Province	AB
Postal Code	T6M 1R1

Amenities

Amenities	Walkout Basement, See Remarks
Parking	Double Garage Attached

Interior

Interior Features	ensuite bathroom
Appliances	Dishwasher-Built-In, Dryer, Garage Control, Garage Opener, Hood Fan, Oven-Microwave, Refrigerator, Stove-Electric, Stove-Gas, Washer, Window Coverings
Heating	Forced Air-1, Natural Gas
Stories	3
Has Suite	Yes
Has Basement	Yes
Basement	Full, Finished

Exterior

Exterior	Wood, Vinyl
Exterior Features	See Remarks
Roof	Asphalt Shingles
Construction	Wood, Vinyl
Foundation	Concrete Perimeter

Additional Information

Date Listed May 22nd, 2025

Days on Market 25

Zoning Zone 57

DATA IS DEEMED RELIABLE BUT IS NOT GUARANTEED ACCURATE BY THE REALTORS® ASSOCIATION OF EDMONTON. COPYRIGHT 2025 BY THE REALTORS® ASSOCIATION OF EDMONTON. ALL RIGHTS RESERVED. Trademarks are owned or controlled by the Canadian Real Estate Association (CREA) and identify real estate professionals who are members of CREA (REALTOR®, REALTORS®) and/or the quality of services they provide (MLS®, Multiple Listing Service®)

Listing information last updated on June 16th, 2025 at 5:02pm MDT