

\$1,890,000 - Hwy 43 South & Hwy 658, Rural Woodlands County

MLS® #E4437291

\$1,890,000

0 Bedroom, 0.00 Bathroom,

Business with Property on 0.00 Acres

None, Rural Woodlands County, AB

This is a rare opportunity to own and operate multiple profitable businesses all within a single property. The property includes a gas station, convenience store, and liquor outlet, along with a residential living area and garage. The building is only 15 years old and has been well maintained. Strategically located on busy Highway 43, it offers year-round high traffic and excellent visibility, with easy access from the highway. An all-in-one package â€” ideal for an owner-operator or investor seeking strong income potential in a prime location.

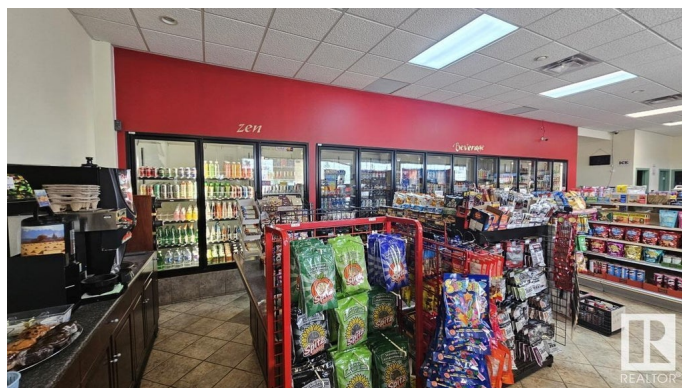
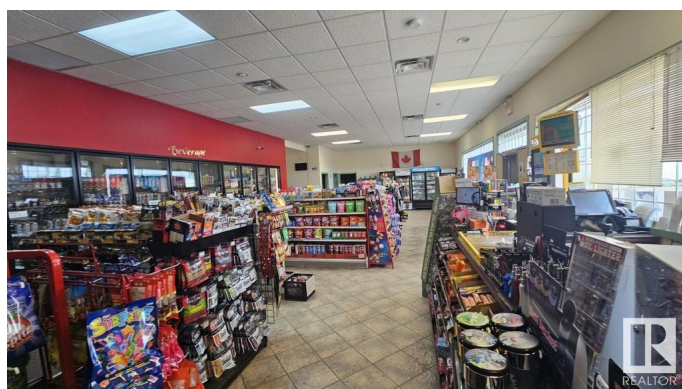
Built in 2007

Essential Information

MLS® #	E4437291
Price	\$1,890,000
Bathrooms	0.00
Acres	0.00
Year Built	2007
Type	Business with Property
Status	Active

Community Information

Address	Hwy 43 South & Hwy 658
Area	Rural Woodlands County
Subdivision	None



City	Rural Woodlands County
County	ALBERTA
Province	AB
Postal Code	T7S 1T7

Exterior

Exterior	Wood Frame
Construction	Wood Frame

Additional Information

Date Listed	May 19th, 2025
Days on Market	82
Zoning	Zone 70

DATA IS DEEMED RELIABLE BUT IS NOT GUARANTEED ACCURATE BY THE REALTORS® ASSOCIATION OF EDMONTON. COPYRIGHT 2025 BY THE REALTORS® ASSOCIATION OF EDMONTON. ALL RIGHTS RESERVED. Trademarks are owned or controlled by the Canadian Real Estate Association (CREA) and identify real estate professionals who are members of CREA (REALTOR®, REALTORS®) and/or the quality of services they provide (MLS®, Multiple Listing Service®)

Listing information last updated on August 8th, 2025 at 10:47pm MDT