

# \$29,900 - 712 59128 Rng Rd 95, Rural St. Paul County

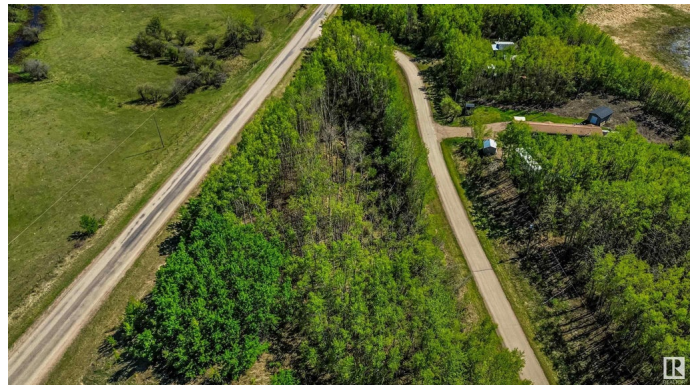
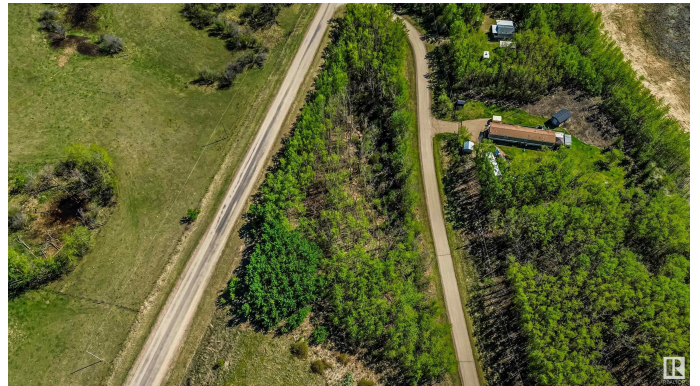
MLS® #E4436411

**\$29,900**

0 Bedroom, 0.00 Bathroom,  
Rural on 1.38 Acres

None, Rural St. Paul County, AB

Discover the perfect setting to build that getaway on Bertha Drive, just moments away from the shores of Vincent Lake. This idyllic 1.38-acre sloping lot offers a serene escape enveloped by the natural beauty of lush trees and captivating terrain. Immerse yourself in the tranquility of nature with this secluded lot nestled amidst towering trees. Enjoy the best of both worlds with easy access to Vincent Lake for water activities and the convenience of nearby amenities. If you are seeking solitude or escape, this location offers endless possibilities.



## Essential Information

MLS® #	E4436411
Price	\$29,900
Bathrooms	0.00
Acres	1.38
Type	Rural
Sub-Type	Vacant Lot/Land
Status	Active

## Community Information

Address	712 59128 Rng Rd 95
Area	Rural St. Paul County
Subdivision	None
City	Rural St. Paul County

County ALBERTA  
Province AB  
Postal Code T0A 3A0

### **Exterior**

Exterior Features Hillside, Not Fenced, Not Landscaped, Private Setting

### **Additional Information**

Date Listed May 13th, 2025

Days on Market 83

Zoning Zone 60

DATA IS DEEMED RELIABLE BUT IS NOT GUARANTEED ACCURATE BY THE REALTORS® ASSOCIATION OF EDMONTON. COPYRIGHT 2025 BY THE REALTORS® ASSOCIATION OF EDMONTON. ALL RIGHTS RESERVED. Trademarks are owned or controlled by the Canadian Real Estate Association (CREA) and identify real estate professionals who are members of CREA (REALTOR®, REALTORS®) and/or the quality of services they provide (MLS®, Multiple Listing Service®)

Listing information last updated on August 4th, 2025 at 6:02am MDT