

\$249,900 - 1000 Alder Avenue, Sherwood Park

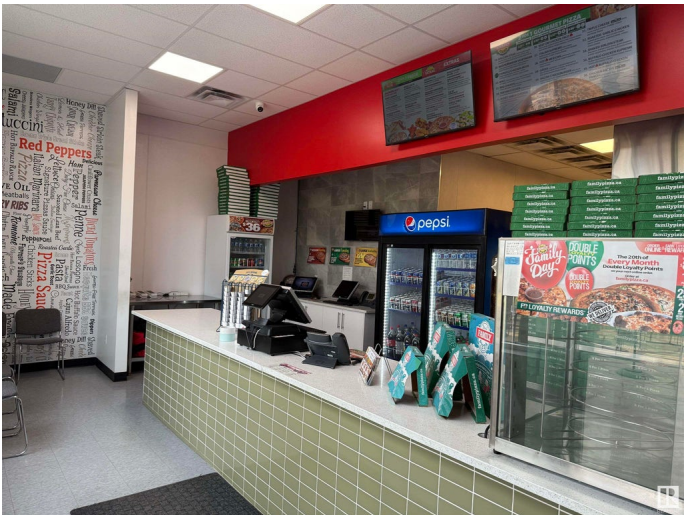
MLS® #E4436390

\$249,900

0 Bedroom, 0.00 Bathroom,
Business on 0.00 Acres

Maplegrove, Sherwood Park, AB

An exceptional opportunity to own a fully operational and turnkey pizza business located in the heart of Sherwood Park! Situated in a high-traffic, prime location, this well-established pizzeria enjoys excellent visibility and consistent foot traffic, making it an ideal investment for both experienced restaurateurs and first-time business owners. The kitchen is fully equipped and up to modern standards, allowing for efficient workflow and high-quality food preparation. Donâ€™t miss your chance to own a thriving pizza business.



Essential Information

MLS® #	E4436390
Price	\$249,900
Bathrooms	0.00
Acres	0.00
Type	Business
Status	Active

Community Information

Address	1000 Alder Avenue
Area	Sherwood Park
Subdivision	Maplegrove
City	Sherwood Park
County	ALBERTA
Province	AB

Postal Code T8A 2G2

Additional Information

Date Listed May 14th, 2025

Days on Market 33

Zoning Zone 25

DATA IS DEEMED RELIABLE BUT IS NOT GUARANTEED ACCURATE BY THE REALTORS® ASSOCIATION OF EDMONTON. COPYRIGHT 2025 BY THE REALTORS® ASSOCIATION OF EDMONTON. ALL RIGHTS RESERVED.Trademarks are owned or controlled by the Canadian Real Estate Association (CREA) and identify real estate professionals who are members of CREA (REALTOR®, REALTORS®) and/or the quality of services they provide (MLS®, Multiple Listing Service®)

Listing information last updated on June 16th, 2025 at 8:32am MDT