

\$499,000 - 428 Crystal Creek Link, Leduc

MLS® #E4436382

\$499,000

4 Bedroom, 3.00 Bathroom, 1,657 sqft
Single Family on 0.00 Acres

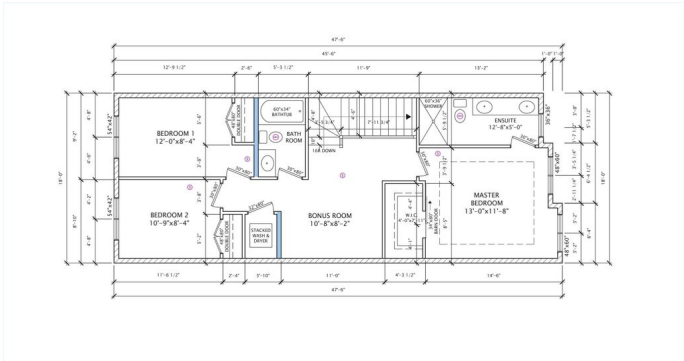
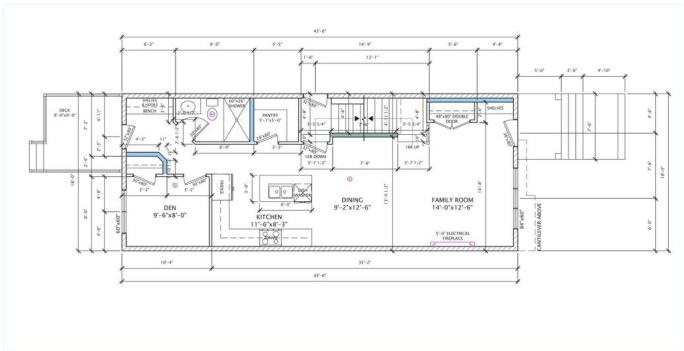
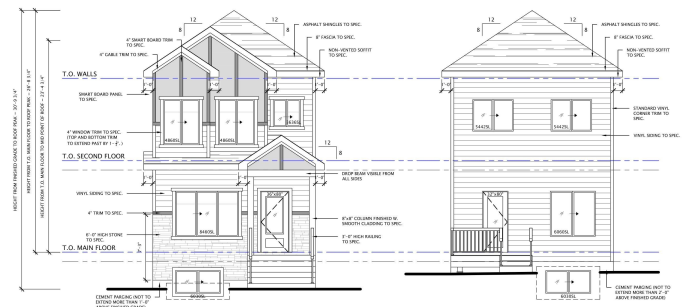
Crystal Creek_LEDU, Leduc, AB

Discover this beautifully designed 1657 sqft home in one of Leduc’s most sought-after Community WEST CREEK, just a 2-minute walk to school and close to all major amenities. Perfect for families, this home features a FULL BATHROOM and BEDROOM on the MAIN FLOOR—ideal for guests or multi-generational living. The open-concept layout includes a modern L-shaped kitchen, spacious living and dining areas, and 9 FT CEILING on all levels, enhancing the bright and airy feel. Upstairs, you’ll find a BONUS ROOM, perfect for family movie nights or a home office. The second floor also boasts three generously sized bedrooms, including a luxurious master with a private ensuite. Enjoy outdoor living with a built-in deck, and park with ease in the detached double garage. Future potential abounds with a SIDE ENTRY to the basement, featuring 2 WINDOWS and ready for development. DOUBLE DETACH GARAGE, APPLIANCES, LANDSCAPING and DECK included.

Built in 2025

Essential Information

MLS® #	E4436382
Price	\$499,000
Bedrooms	4



Bathrooms	3.00
Full Baths	3
Square Footage	1,657
Acres	0.00
Year Built	2025
Type	Single Family
Sub-Type	Detached Single Family
Style	2 Storey
Status	Active

Community Information

Address	428 Crystal Creek Link
Area	Leduc
Subdivision	Crystal Creek_LEDU
City	Leduc
County	ALBERTA
Province	AB
Postal Code	T9E 1N3

Amenities

Amenities	Ceiling 9 ft.
Parking	Double Garage Detached

Interior

Interior Features	ensuite bathroom
Appliances	Dishwasher-Built-In, Dryer, Microwave Hood Fan, Refrigerator, Stove-Electric, Washer
Heating	Forced Air-2, Natural Gas
Fireplace	Yes
Fireplaces	Remote Control, Wall Mount
Stories	2
Has Basement	Yes
Basement	Full, See Remarks

Exterior

Exterior	Wood, Vinyl
Exterior Features	Airport Nearby, Park/Reserve, Schools, Stream/Pond
Roof	Asphalt Shingles
Construction	Wood, Vinyl

Foundation Concrete Perimeter

School Information

Middle Ohpaho Seconday School

Additional Information

Date Listed May 14th, 2025

Days on Market 26

Zoning Zone 81

DATA IS DEEMED RELIABLE BUT IS NOT GUARANTEED ACCURATE BY THE REALTORS® ASSOCIATION OF EDMONTON. COPYRIGHT 2025 BY THE REALTORS® ASSOCIATION OF EDMONTON. ALL RIGHTS RESERVED.Trademarks are owned or controlled by the Canadian Real Estate Association (CREA) and identify real estate professionals who are members of CREA (REALTOR®, REALTORS®) and/or the quality of services they provide (MLS®, Multiple Listing Service®)

Listing information last updated on June 9th, 2025 at 6:47am MDT