

\$604,900 - 11923 123 Street, Edmonton

MLS® #E4435124

\$604,900

6 Bedroom, 4.00 Bathroom, 1,755 sqft

Single Family on 0.00 Acres

Prince Charles, Edmonton, AB

This brand-new, 2-storey half duplex features a modern open-concept living area with quartz countertops and a main-floor bedroom with a 3-piece bathroom. Upstairs, you'll find three bedrooms, including a Primary with an ensuite and walk-in closet, plus a laundry room and a 4-piece bathroom. The property also includes a 2-bedroom legal suite and a double detached garage. *Note that the property is currently still under construction.

Built in 2025

Essential Information

MLS® #	E4435124
Price	\$604,900
Bedrooms	6
Bathrooms	4.00
Full Baths	4
Square Footage	1,755
Acres	0.00
Year Built	2025
Type	Single Family
Sub-Type	Half Duplex
Style	2 Storey
Status	Active

Community Information

Address 11923 123 Street



Area Edmonton
Subdivision Prince Charles
City Edmonton
County ALBERTA
Province AB
Postal Code T5L 0G9

Amenities

Amenities Carbon Monoxide Detectors, Smoke Detectors, Hot Water, Smoking Home, Smart/Programmable Thermostat
Parking Double Garage Detached

Interior

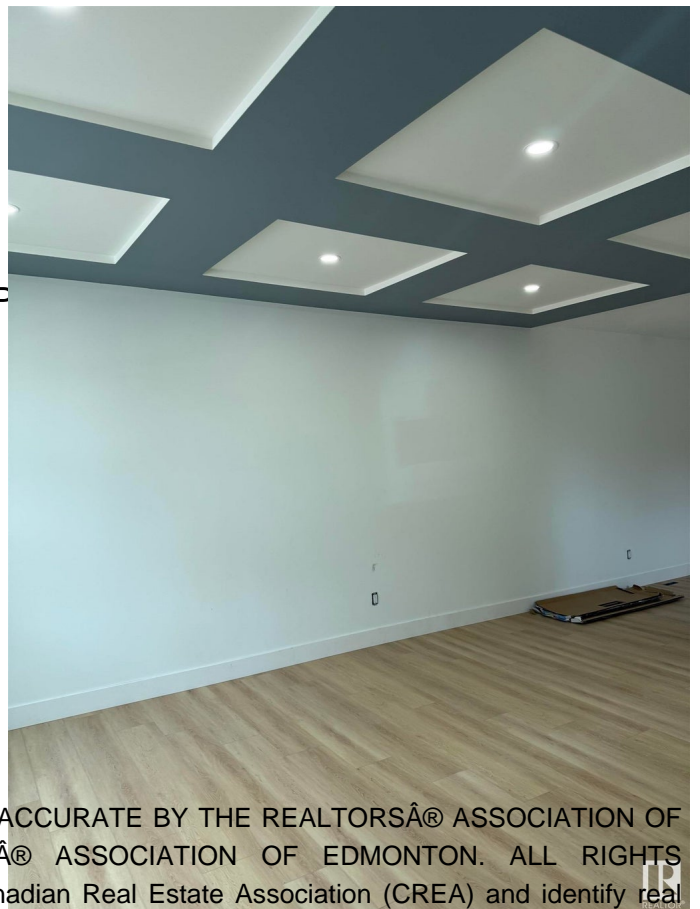
Interior Features ensuite bathroom
Appliances Garage Control, Garage Opener
Heating Forced Air-2, Natural Gas
Stories 3
Has Suite Yes
Has Basement Yes
Basement Full, Finished

Exterior

Exterior Wood, Stone, Vinyl
Exterior Features Back Lane, Landscaped, Fenced, Schools, Shopping Nearby
Roof Asphalt Shingles
Construction Wood, Stone, Vinyl
Foundation Concrete Perimeter

Additional Information

Date Listed May 8th, 2025
Days on Market 1
Zoning Zone 04



DATA IS DEEMED RELIABLE BUT IS NOT GUARANTEED ACCURATE BY THE REALTORS® ASSOCIATION OF EDMONTON. COPYRIGHT 2025 BY THE REALTORS® ASSOCIATION OF EDMONTON. ALL RIGHTS RESERVED. Trademarks are owned or controlled by the Canadian Real Estate Association (CREA) and identify real estate professionals who are members of CREA (REALTOR®, REALTORS®) and/or the quality of services they provide (MLS®, Multiple Listing Service®)

Listing information last updated on May 9th, 2025 at 4:17pm MDT