

# **\$899,800 - 26120 Twp Road 511, Rural Parkland County**

MLS® #E4434577

**\$899,800**

4 Bedroom, 4.50 Bathroom, 4,201 sqft

Rural on 3.10 Acres

Devonridge Estates, Rural Parkland County, AB

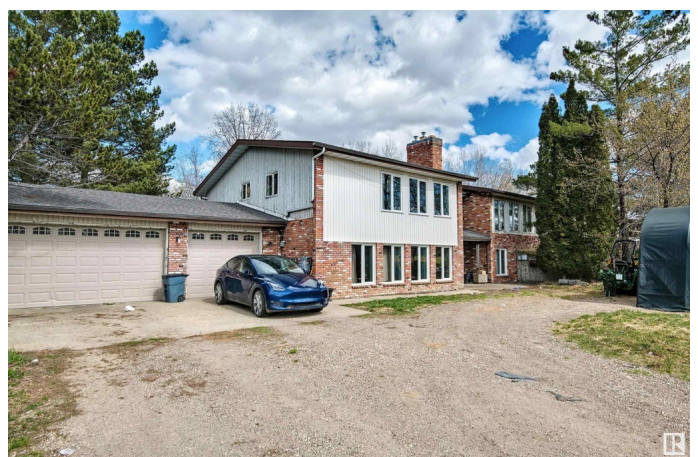
Welcome to Devonridge Estates! This private, gated, just over 3 Acre property is fully fenced in, offers a beautiful blend of both cleared spaces and treed coverage for your new home with Massive INDOOR POOL, and attached NANNY / SECONDARY SUITE! Built into the hillside as a walkout home amassing a total of over 7000 SQ FT, this completely one of a kind estate is the country retreat you've been searching for, and less than 10 minutes from City of Edmonton amenities. Key highlights to note are the full sized heated indoor pool with sauna and 10 person hot tub, full nanny suite with kitchen, bedroom, living room, and bathroom, 3 Acres of fully fenced and enclosed land, a quad or bike path cleared, and multiple other clearings for recreational use, OVERSIZED heated TRIPLE GARAGE, UPGRADED ELECTRICAL, newer roof, furnaces, pool heater and pump, HRV, the list goes on this home has seen massive investment. Awaiting your finishing touch on the cosmetic end and with a few other updates this home is remarkable.

Built in 1978

## **Essential Information**

MLS® # E4434577

Price \$899,800



Bedrooms	4
Bathrooms	4.50
Full Baths	4
Half Baths	1
Square Footage	4,201
Acres	3.10
Year Built	1978
Type	Rural
Sub-Type	Detached Single Family
Style	Bungalow
Status	Active

### Community Information

Address	26120 Twp Road 511
Area	Rural Parkland County
Subdivision	Devonridge Estates
City	Rural Parkland County
County	ALBERTA
Province	AB
Postal Code	T7Y 1B8

### Amenities

Features	Air Conditioner, Deck, Fire Pit, Hot Tub, Pool-Indoor, Smart/Program. Thermostat, R.V. Storage, Sauna; Swirlpool; Steam, Vaulted Ceiling, Walkout Basement
----------	--

### Interior

Interior Features	ensuite bathroom
Heating	Forced Air-2, In Floor Heat System, Natural Gas
Fireplace	Yes
Stories	2
Has Suite	Yes
Has Basement	Yes
Basement	Full, Finished

### Exterior

Exterior	Wood
Exterior Features	Backs Onto Park/Trees, Corner Lot, Fenced, Hillside, Private Setting, Treed Lot

Construction	Wood
Foundation	Concrete Perimeter

**Additional Information**

Date Listed	May 5th, 2025
Days on Market	42
Zoning	Zone 90

DATA IS DEEMED RELIABLE BUT IS NOT GUARANTEED ACCURATE BY THE REALTORS® ASSOCIATION OF EDMONTON. COPYRIGHT 2025 BY THE REALTORS® ASSOCIATION OF EDMONTON. ALL RIGHTS RESERVED.Trademarks are owned or controlled by the Canadian Real Estate Association (CREA) and identify real estate professionals who are members of CREA (REALTOR®, REALTORS®) and/or the quality of services they provide (MLS®, Multiple Listing Service®)

Listing information last updated on June 16th, 2025 at 8:47am MDT