

Courtesy Of Karen Martin Of Northfield Commercial

\$1,850,000 - 10736 116 Street, Edmonton

MLS® #E4434204

\$1,850,000

0 Bedroom, 0.00 Bathroom,
Multi-Family Commercial on 0.00 Acres

Queen Mary Park, Edmonton, AB

This beautifully constructed property is in a prime location and fully occupied. Two suites are configured as a two-story home- offering space and privacy, four suites have front and back entrances ,all units have in-suite laundry, granite countertops, stainless steel appliances, two full baths, balconies, assigned parking security, extremely well managed and clean premises. Shows impeccably and quality is evident at every turn. Six suites are offered as a package only, not individually.

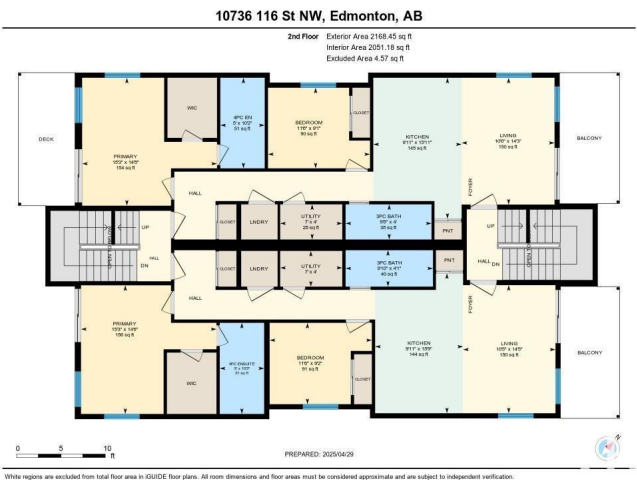
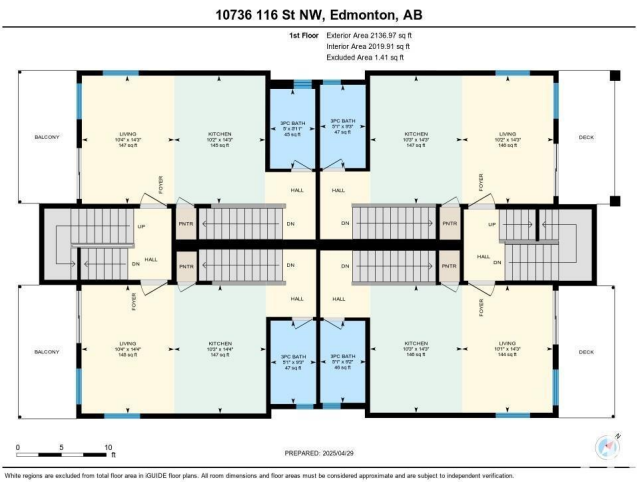
Built in 2018

Essential Information

MLS® #	E4434204
Price	\$1,850,000
Bathrooms	0.00
Acres	0.00
Year Built	2018
Type	Multi-Family Commercial
Status	Active

Community Information

Address	10736 116 Street
Area	Edmonton
Subdivision	Queen Mary Park
City	Edmonton
County	ALBERTA



Province	AB
Postal Code	T5H 3M2

Exterior

Exterior	Mixed
Construction	Mixed

Additional Information

Date Listed	April 30th, 2025
Days on Market	9
Zoning	Zone 08

DATA IS DEEMED RELIABLE BUT IS NOT GUARANTEED ACCURATE BY THE REALTORS® ASSOCIATION OF EDMONTON. COPYRIGHT 2025 BY THE REALTORS® ASSOCIATION OF EDMONTON. ALL RIGHTS RESERVED.Trademarks are owned or controlled by the Canadian Real Estate Association (CREA) and identify real estate professionals who are members of CREA (REALTOR®, REALTORS®) and/or the quality of services they provide (MLS®, Multiple Listing Service®)

Listing information last updated on May 9th, 2025 at 5:02pm MDT